

WOAH: Improving animal health globally to ensure a better future for all

Dr Monique Eloit
WOAH Director General

33rd Conference of the Regional Commission for Asia and the Pacific
New Delhi, India, 13 - 16 November 2023



World
Organisation
for Animal
Health
Founded as OIE

Organisation
mondiale
de la santé
animale
Fondée en tant qu'OIE

Organización
Mundial
de Sanidad
Animal
Fundada como OIE



Index



Our mission



Members' current
challenges



Our support



Our contribution



Section 1: Our Mission

We work to ensure the health of animals and their environments across the world, recognising that animal health impacts everyone's health and that the safety of our future depends on it.

We empower our Members, communities and partners in our global quest for a more sustainable society, one that benefits animals, humans and the planet.



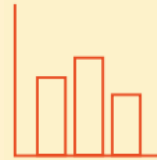
Our Mission

We support policy makers and governments to create a world in which humans and animals can bring mutual benefits to each other, to transform lives, support economies and ensure a safer and healthier future for all.

Our areas of work:

TRANSPARENCY

Animal Health Information management



STANDARDS

Development and follow up of international standards application



GLOBAL INITIATIVES

Development and support in the implementation of global strategies

CAPACITY

Capacity building for animal health professionals



INTERNATIONAL COOPERATION



Section 2: Members' current challenges

Natural and man-made disasters along with COVID-19 crisis have disrupted our communities and ways of life. With devastating effects on society, it has also heavily challenged our food supply chains, livelihoods, economies as well as animal production systems.

Members' current challenges

Populations still being affected by:

- Transboundary and emerging diseases
- Zoonoses and food-borne diseases
- Insufficient access to protein



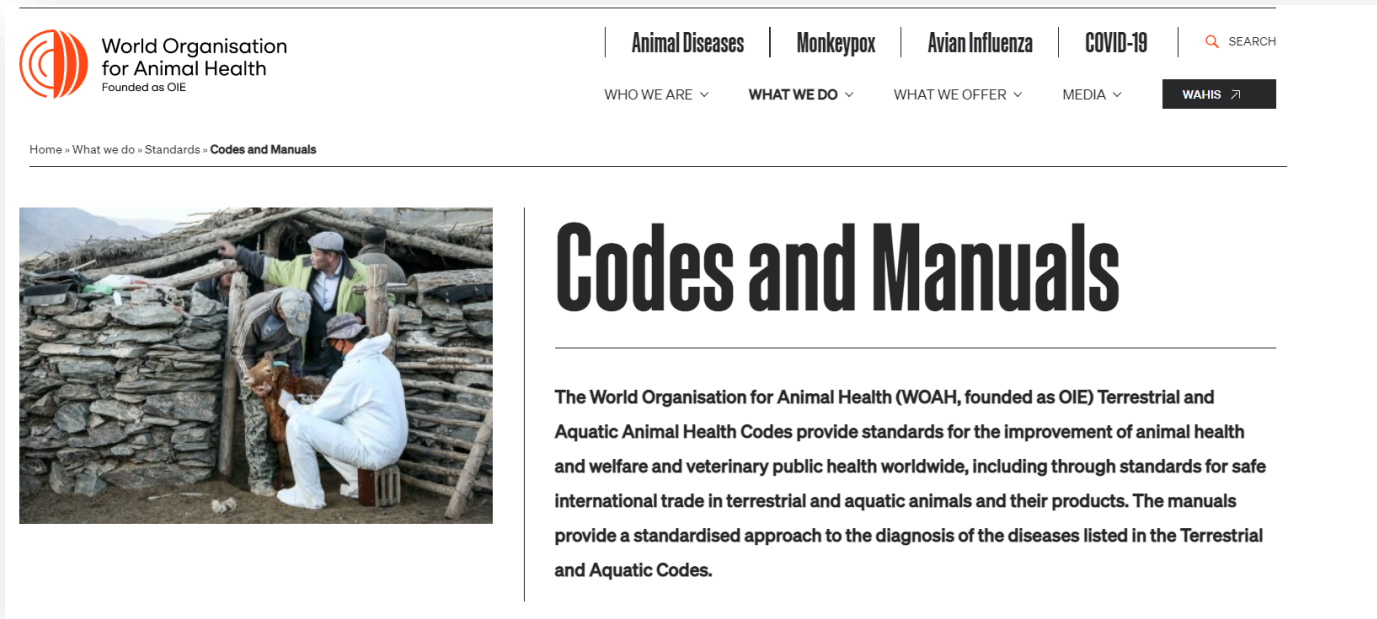
New global developments:

- Climate change
- Pandemics
- Changing food consumption patterns
- Animal welfare
- Expectations for more environmentally friendly animal production systems



Members' current challenges

- We are ready to respond to our Members' needs including with new approaches regarding animal health and welfare:
 - Rethinking our policies to adapt and keep up-to date with the changing global environment (e.g., AI standards revision)



The screenshot displays the WOAH website header with the logo and navigation menu. The main content area features a photograph of a person in a white protective suit examining a small animal in a rural setting. The page title is 'Codes and Manuals', and the introductory text describes the organization's role in providing standards for animal health and welfare.

World Organisation for Animal Health
Founded as OIE

Animal Diseases | Monkeypox | Avian Influenza | COVID-19 | SEARCH

WHO WE ARE ▾ WHAT WE DO ▾ WHAT WE OFFER ▾ MEDIA ▾ WAHIS ↗

Home » What we do » Standards » Codes and Manuals

Codes and Manuals

The World Organisation for Animal Health (WOAH, founded as OIE) Terrestrial and Aquatic Animal Health Codes provide standards for the improvement of animal health and welfare and veterinary public health worldwide, including through standards for safe international trade in terrestrial and aquatic animals and their products. The manuals provide a standardised approach to the diagnosis of the diseases listed in the Terrestrial and Aquatic Codes.

Members' current challenges

Standards for the implementation of measures for the prevention and control of pathogenic agents



Members' current challenges

We are ready to respond to our Members' needs including with new approaches regarding animal health and welfare:

- Considering consumers expectations and changes, to better respect animals, the environment, humans, etc.





Section 3: Our support

Veterinary Services make a vital contribution to global health security in areas such as emerging zoonoses, AMR and food safety, as they address “risk at source” for most major infectious threats, including pandemics.

We have a proven track record in supporting the strengthening of national Veterinary Services based on principles of good governance and the quality of Veterinary Services, as embodied by its international Standards.

Our Support

- Global Strategies and Initiatives



Global FMD Control Strategy



PPR Global Control and Eradication Strategy



Rabies Global Strategic Plan



GF-TADs initiative for the Global control of ASF



Our Support

Bio Threat Reduction Strategy



AW Strategy



AMR and AMU Strategy



Our Support

- Global Strategies and Initiatives

Aquatic Animal Health Strategy



Wildlife Health Framework



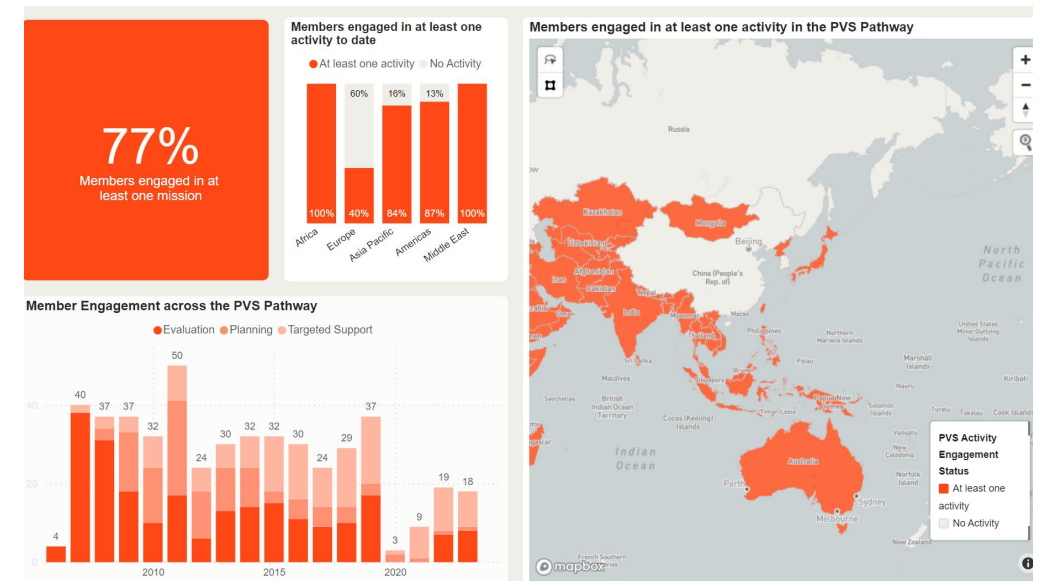
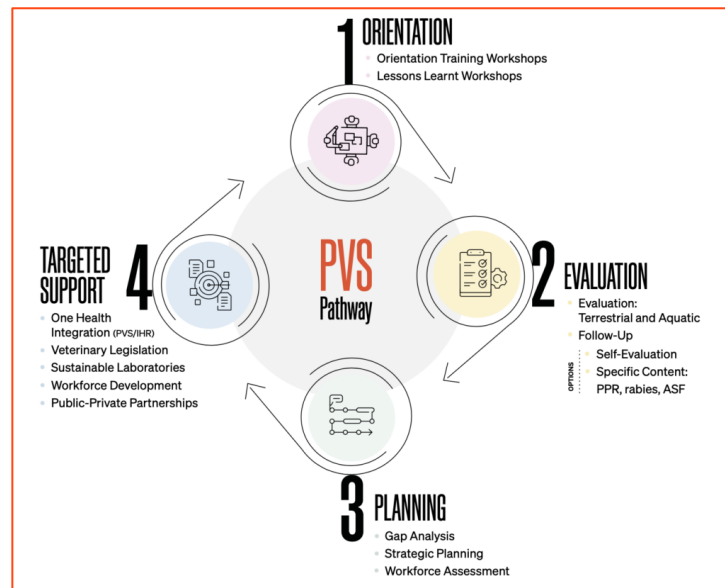
Our Support

Building Capacity of the Veterinary Services to better face challenges:

- Platform for the Training of the Veterinary Services
- Strengthening the capacity of Veterinary Services
- Workforce assessment and planning
- Effective integration of VPPs into the veterinary workforce




PVS Pathway





Our Support

A photograph of several chickens of different breeds, including a large brown rooster in the foreground, a black and red rooster in the middle, and a smaller brown rooster on the right. They are standing on a grey paved surface. The background is slightly blurred, showing a white duck and a person's leg in a white shoe.

As we support Members' Veterinary Services to prepare and respond to health crises and build more resilient animal health systems, we continue to create a healthier and safer world for all



Section 4 : Our contribution

The health of animals and of the environment strongly depends on human activities and it also determines human health.

It's everyone's health!



Our contribution

It's everyone's health

World Health

60% of pathogens that cause human diseases originate from domestic animals or wildlife.

75% of emerging human pathogens are of animal origin.

80% of pathogens that are of bioterrorism concern originate in animals.

Food Security

Each night, **some 811 million people** go to bed hungry

More than 70%^[1] additional animal protein will be needed to feed the world by 2050

Meanwhile, **more than 20%** of global animal production losses are linked to animal diseases.

Environment

Humans and their livestock are more likely to encounter wildlife when **more than 25%** of an original forest cover is lost. Some of these contacts may increase the likelihood of disease transmission.

Human actions have severely altered 75% of terrestrial environments and 66% of marine environments.

Economy

Animal diseases pose a direct threat to the **incomes** of rural communities that depend on livestock production.

More than 75%^[2] of the billion people who live on less than \$2 per day depend on subsistence farming and raising livestock to survive.



Our contribution

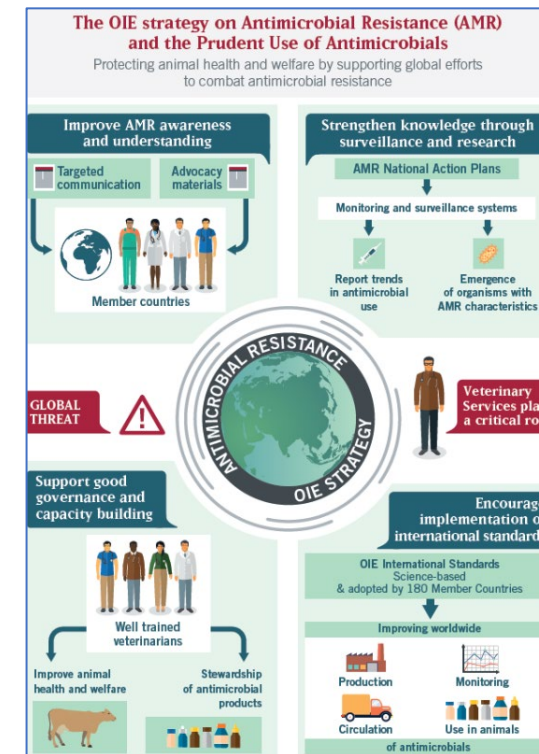
- Political recognition that animal health and welfare plays a key role in the global health agenda



Our contribution

One Health in action:

- The United Against Rabies Forum led by FAO, WHO and WOAH
- The AMR Strategic Framework



Our contribution

The One Health Joint Plan of Action

Action Track 1: Enhancing One Health capacities to strengthen health systems

Action Track 6: Integrating the Environment into One Health

Action Track 2: Reducing the risks from emerging and re-emerging zoonotic epidemics and pandemics



Action Track 5: Curbing the silent pandemic of Antimicrobial Resistance (AMR)

Action Track 3: Controlling and eliminating endemic zoonotic, neglected tropical and vector-borne diseases

Action Track 4: Strengthening the assessment, management and communication of food safety risks





Our contribution

Participation in the negotiations for a new international instrument for pandemic preparedness, prevention and response

- One Health as a foundation principle
- The pandemic instrument should clarify the different roles and responsibilities for the main actors involved in **pandemic prevention**

The Pandemic Fund and One Health financing

Members have a crucial role to play



Challenges faced by Members highlight the importance of addressing animal health and welfare through a more holistic approach

That is the today's challenge for the WOAH to prepare for the future

Thank you

12, rue de Prony, 75017 Paris, France
T. +33 (0)1 44 15 19 49
F. +33 (0)1 42 67 09 87

woah@woah.int
www.woah.org

[Facebook](#)
[Twitter](#)
[Instagram](#)
[LinkedIn](#)
[YouTube](#)
[Flickr](#)



World
Organisation
for Animal
Health
Founded as OIE

Organisation
mondiale
de la santé
animale
Fondée en tant qu'OIE

Organización
Mundial
de Sanidad
Animal
Fundada como OIE

