

Roundtable Discussions

4:00 PM-4:40 PM, Throughbred 1

NAEE Fundraising Coaching

How do I start conversations that lead to bigger gifts? How can I get my board members more engaged in fundraising? Is this project right for corporate or foundation support? Am I doing ANY of this right? Whether you're new to fundraising or a seasoned professional, bring your questions to NAEE's fundraising roundtables. Space is limited; advance sign up at the Information Station required. Presenters: Lea Harvey, LHH Strategy Advisors, LLC; Krishna Roy, Consultant

Bridging Formal and Informal Education in a Summer Science-Literacy Program

Table 2 How do we bridge formal and informal education? How are they best used together? This session highlights the development, delivery, and outcomes of an environmental education summer program that bridges formal and informal education by creating partnerships and enhancing early childhood environmental education for marginalized students. Presenters: Maryam Ghaderi, University of Davis

eeWORKS: Linking Community, Citizen Science, and Environmental Education

Table 3 Community and citizen science (CCS) can provide pathways for people to investigate and learn about environmental topics while simultaneously contributing to scientific research and conservation. In this presentation, we will share findings from a systematic research literature review that shed light on best practices for designing CCS for environmental education. Presenters: Christopher Jadhav, University of California-Davis, School of Education; Amanda Lindell, University of California-Davis

- Building Leadership for Environmental Literacy
Connecting with Nature
Conservation and Environmental Education
Educating for Sustainable Communities
Green Schools and Preparing for 21st Century Careers
Using Research and Practice to Increase Impact
Equity and Inclusion
Young Professionals
NAEE Affiliate Network
ee360

Roundtable Discussions

4:50 PM-5:30 PM, Throughbred 1

EE Certification: The Benefits of Being Certified

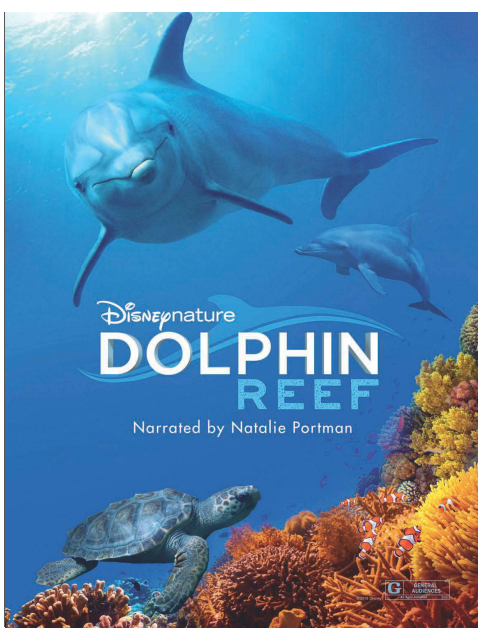
4:50 PM-5:30 PM, Throughbred 1 Whether you are new to the field or have years of experience, EE certification programs can help you grow as an environmental educator and develop your professional credentials. Find out more about certification, talk with certified environmental educators, and explore opportunities available across the country. Presenters: LoriAnne Barnett, Arizona Association for Environmental Education; Sarah Holmes, Towson University; Anne Umlatt, NAAEE; Bruce K. Young, NAAEE

Environmental Service Learning: A Strategy for Educational and Conservation Change

4:50 PM-5:30 PM, Throughbred 1 Quality Environmental Service Learning (ESL) is a transformative education strategy with tangible conservation impacts. Participants are empowered, develop skills, and authentically collaborate with their community to address specific environmental issues. A draft model for developing, implementing, and enhancing ESL for greater educational and conservation outcomes and impacts will be presented and discussed. Presenters: Steven Braun, ee360; Thomas J. Marcinkowski, Florida Institute of Technology

Supporting Youth in Creating Institutional Change for Sustainability

4:50 PM-5:30 PM, Throughbred 1 In this roundtable we will explore how educators and researchers can engage and support young people in contributing to institutional- and systems-level transformation towards more just and sustainable futures. The presenter and participants will share experiences, ideas, and questions related to supporting youth in taking institutional action. Presenters: Kelsey Payne, University of Colorado-Boulder



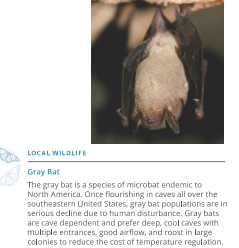
Sense of Wonder: Nature Journaling

Table 4 Through the use of Natural Journals, rekindle your sense of wonder by making your own nature journal. Join us to share and learn innovative ways to reconnect with nature by using trade books, technology, art, writing, and nature quotes during this hands-on journaling activity. Presenters: Molina Walters, Arizona State University

Updated and Revised—K-12 Environmental Education: Guidelines for Excellence

Table 5 NAAEE's K-12 Environmental Education: Guidelines for Excellence, part of the Guidelines for Excellence series, describes a framework and a set of student performance indicators for environmental literacy that are benchmarked at 4th, 8th, and 12th grades. We recently completed the updating process. Come take a look! Presenters: Bora Simmons, National Project for Excellence in Environmental Education; Billy Bennett, Kentucky Environmental Education Council

LOCAL WILDLIFE



Gray Bat

The gray bat is a species of microbat endemic to North America. Once thriving in caves all over the southeastern United States, gray bat populations are in serious decline due to human disturbance. Gray bats are cave dependent and prefer deep, cool caves with multiple entrances, good airflow, and roost in large colonies to reduce the cost of temperature regulation.

Welcoming Visitors of All Abilities: Strategies for Access and Inclusion

4:50 PM-5:30 PM, Throughbred 1 From sensory-friendly days, to early open events, to multimodal and interactive exhibit design, environmental education centers are doing more than ever before to welcome individuals with a variety of special needs. Together we will review success stories and learning experiences to inform future initiatives to increase access and meaningful inclusion. Presenters: Jordan McNeill, University of North Carolina-Chapel Hill

Thursday 5:30 PM

Receptions

5:30 PM-7:00 PM

HMMI Movie Night: Our Gorongosa

5:30 PM-7:00 PM, Bluegrass Ballroom 2 Join HMMI Tangled Bank Studios for Movie Night, featuring Our Gorongosa: A Park for the People. The film explores a new vision for conservation in Mozambique that benefits both the animals in the national park and the people living around it, especially girls and women. The film follows Dominique Gonçalves, a vibrant Mozambican ecologist who runs the Gorongosa elephant ecology project, as she shares the myriad ways Gorongosa is redefining the identity and purpose of an African national park. From her own work mitigating human/elephant conflict, to community clubs and school programs that empower girls to avoid teen marriage and pregnancy, to health clinics and nutrition training for expectant mothers and families, Dominique leads visitors on an emotional and eye-opening journey that will transform their understanding of what a national park can be. Enjoy refreshments before the film. This event is free and open to all, but advance registration is requested. Check for available space at the door. See the advertisement on page 21.

Thursday 4:50 PM

Meeting

4:50 PM-5:30 PM

Queer Environmental Educators Network (QEE) Gathering

4:50 PM-5:30 PM, Heritage Ballroom 1 Join us for the QEE gathering of QEE, the Queer Environmental Educators Network, for LGBTQ+ identified educators. Coordinators: Rochelle Gandour-Rood, Tacoma Water; Charissa Jones, Oregon State University; Whitney Furuta, Tokyo University of Agriculture and Technology

Traditional Presentations

4:50 PM-5:30 PM

Affiliate Heads Together

4:50 PM-5:30 PM, Hyatt Suites Heads Together is a powerful team-to-team problem solving activity in which Affiliate teams are paired with one another to gain and provide insights in the challenges they each face. Bring a challenge with you and we will pair you with another Affiliate team to brainstorm, share, and learn. Strand: ee360

Do Changing Attitudes to Teaching Science Affect Environmental Workforce?

4:50 PM-5:30 PM, Beraa This talk will examine the effect of science methods courses on environmental worldview and attitudes towards teaching science. Although the instructor is a passionate environmental educator, abundant data indicate only action attitudes changed, so we'll consider why along with the benefits and challenges of doing your own science research. Presenters: Bryan Nichols, Florida Atlantic University

Initiating Community Engagement Using Asset Mapping

4:50 PM-5:30 PM, Throughbred 3 The community asset mapping process from NAAEE's Community Engagement Guidelines for Excellence is used in a workshop designed to discover connections between community members from a variety of nonprofit and for-profit organizations. Ultimately, this developed the core of a community engagement team that continues to promote EE. Presenters: Jaimee Huns, Western Kentucky University; Terry Wilson, Western Kentucky University

International Collaboration Matters 2: Studying EE Researchers Across Nations

4:50 PM-5:30 PM, Throughbred 5

In response to the spirited discussions during the 2018 NAAEE Conference, we decided to hold another session concerning issues of designing an international survey. A group of Japanese, Taiwanese, and Korean researchers is going to highlight potentialities and issues of developing a survey questionnaire that would capture researchers' involvements with the Sustainable Development Goals. Presenters: Kimiharu To, Asomi University; Shinichi Furihata, Tokyo University of Agriculture and Technology

Not an Afterthought: Reaching Diverse Audiences with After-School Programs

4:50 PM-5:30 PM, Ekhorn A Our after-school outreach programs were developed intentionally to reach beyond our park and create a personal experience with nature for children across Atlanta. We will discuss the successes and challenges we have encountered developing our programs to work at any school site and ensure all can participate. Presenters: Lauren Reynolds, Blue Heron Nature Preserve; Nicole Thurston, Blue Heron Nature Preserve

Research Accelerators: Inquiry Focused Outreach to Drive Community Science

4:50 PM-5:30 PM, Ekhorn B This session will discuss the Research Accelerators, a team of educators who mentor students building individual research projects rooted in the outdoors in Milwaukee, Wisconsin emphasizing engagement with water. The Research Accelerators increase access to environmental education for diverse students in urban settings through place-based, community-oriented programming using digital field technology with youth. Presenters: Isabelle Herde, Upham Woods Outdoor Learning Center; R. Justin Hougham, University of Wisconsin-Madison; Tempest Morgan, Upham Woods Outdoor Learning Center

Informal Gatherings

7:00 PM-10:00 PM

Young Professional Networking Dinner & Drinks

7:00 PM-10:00 PM, Meet at the Registration Desk What better way to meet new colleagues than to spend your open evening networking over a few drinks? Join Bourbon & Brew and visit three nearby Lexington nightspots to enjoy Kentucky bourbon, beer, a light dinner, and great conversation. The venues—Creaux, Sual Good, and Thirsty Fox—were selected for their local flavor. Meet at the registration desk at 7:00 PM to check in and pick up your drink tickets. This is a walking event; the group will move together to each venue. Advance registration is required; this event is sold out.

eeBLUE Social

5:30 PM-7:00 PM, Patterson E-G

Join NOAA and NAAEE for an informal reception highlighting our eeBLUE partnership to advance ocean education and environmental literacy.

Art and Nature

5:30 PM-7:30 PM, Lexington Public Library, 140 E. Main Street Prey by the Paint by Nature: Streetside exhibit, a celebration of the beauty and benefits of using Kentucky native plants, featuring local artists. While you're there, design pollinator-friendly possibilities for your own yard using the Paint by Nature interactive game. Light snacks will be provided. Free. No registration required.

New Resources for the Trail and Classroom. 15% off all orders over \$50 with coupon NAAEE50. Acorn Naturalists' catalog features hundreds of new products for educators, nonprofits, and students. Call for a free copy of our latest catalog or visit our website. 1472 Plaza Drive, Suite 100, Tucson, IA 52788, (800) 422-8888, (800) 452-2802 FAX, acornnaturalists.com



Friday

Lexington at Leisure

Coffee Tour 6:30 AM-8:15 AM. Meet at the registration desk. Get to know Lexington with this guided walk around downtown. From historic buildings to art installations, learn about what makes Lexington unique while enjoying local coffee or tea. Free. No registration required.

Morning Yoga: From Awareness to Action

7:30 AM-8:15 AM, Patterson E-G Wake to the new day with awareness of breath, movement, and alignment. Through this gentle practice, reconnect with your body and mind's ability to move intentionally throughout the actions of the day. Instructor Pam Thomas is certified by and registered with the Yoga Alliance.

Friday 8:30 AM

Symposium

8:30 AM-6:00 PM

Integrating Archaeology and Environmental Education to Strengthen Cultural Understanding

8:30 AM-10:00 AM, Kentucky Archaeologists study human adaptation to the natural world, the importance of the environment to past peoples, and how human activity is influenced by place, all of which intersect with EE. Archaeology educators will discuss how EE impacts their programming and partnerships and how to continue to integrate the two fields. Presenters: Derrick Baldwin, Bureau of Land Management; A. Henderson, Kentucky Archeological Survey; Jeanne Moe, Bureau of Land Management; William Quakenbush, Ho-Chunk Nation of Wisconsin; Elizabeth Rouse, University of Iowa Office of the State Historian; Arlene M. Land Management Moderator: Janet Carrier Ady, Bureau of Land Management

Hands-On Presentations

8:30 AM-10:00 AM

Bridging the Gap Between Environmental Justice and Environmental Education

8:30 AM-10:00 AM, Heritage Ballroom 1 Ecosystem health and the health of communities are inextricably linked. It is often minority populations that carry the impacts of the weightiest environmental problems. In this session we will discuss justice, equity, diversity, and inclusion in EE and the social justice strategies needed to see work towards a equitable future. Presenters: Parker McMullen Bushman, Butterfly Pavilion

Clams Don't Breathe Watershed Education and Service Learning Using Oysters

8:30 AM-10:00 AM, Regency Ballroom 1 Join us to learn about a watershed education program that integrates the study of filter-feeding bivalves such as clams, oysters, and mussel; hands-on water quality measurements using "cookbook" water quality kits; and field-based service learning through the restoration of oyster reefs. Presenters: Tina Miller-Way, Dauphin Island Sea Lab

Youth Summits: Inspiring Stewardship and Engagement

4:50 PM-5:30 PM, Throughbred 2

Youth summits are popping up across the world to convene young voices and inspire change. What makes these programs effective at supporting stewardship and civic engagement? Explore how the Wild Center's Youth Climate Summit model provides a platform for practical replication through a case study of the Youth Environmental Action Summit. Presenters: Elise Trelogan, NOAA; Aurelio Giannetti, Ward Museum, Salisbury University; Jen Krstner, The Wild Center

Bright Spots

4:50 PM-5:30 PM, Ekhorn A Learn about two or three successful and loosely related programs in each 40-minute session. Sessions are presented in the order listed.

GROUP A

4:50 PM-5:30 PM, Ekhorn C

Kinderforest... and Other Outcomes of Developing Local Partnerships

Dig into the power of partnerships to level the load and increase capacity to reach learners deeply. This relationship between a nature center and a neighboring rural, low-income public school is utilizing place-based pedagogy and student-directed learning to grow students academically, socially, emotionally, and physically. Presenters: Tom Hartzell, Goshen College

A Toolkit for Starting an Early Childhood Nature-Based School

Do you dream about starting an early childhood nature-based school, like a nature preschool or forest kindergarten? Join us to explore a toolkit that will help you with the necessary steps in making this dream a reality, including topics such as licensing, business planning, partnerships, and the challenges you may face. Presenters: Erin Saunders, Thorne Nature Experience

GROUP B

4:50 PM-5:30 PM, Ekhorn D

Digging Deeper: How an App Can Teach Sustainable Decision Making

As the world's population grows, food scarcity and the need for sustainable land management will become more prevalent. Come learn how an app can teach students to analyze a landscape to determine if an area should be farmed, grazed, left alone, etc. from a new NGS-aligned, hands-on education model. Presenters: Ryan Nathaniel-Thomas Pemberton, Asomiro Institute for Science Education

The Digital Naturalist Journal Project: Science + Storytelling

A curricular approach to science telling: using scientific data to tell stories. This modern take on Darwin's naturalist notebook encourages students to make sense of their world through observation, data collection, and digital storytelling. Presenters: Shari Carrowell, Katy ISD; Courtney Tamm, St. Edward's University

The NCF-Environthon: Educating the Next Generation of Leaders

How do we balance quality of life and quality of the environment? Annually, over 25,000 high school students across the United States, Canada, and China embark on a journey to solutions to this critical question through the National Conservation Foundation-Environthon. Learn how the program educates the next generation of leaders. Presenters: Jennifer Brooks, NCF-Environthon

EXHIBIT FAIR

BOOTH #37

NOAA Office of Education. Explore our scholarships, funding opportunities, and learning resources at the NOAA Education Resource Portal: noaa.gov/education. eeBLUE naaee. NOAA Office of Education and NAAEE are partnering to increase environmental and science literacy among NAAEE's partners and external networks. Learn more at eeblue.org. COSTA RICA Rainforest Experience. Study Abroad Programs, Sustainable Tourism, visit us at Stand # 32. Info@costaricarainforexperience.com, www.costaricarainforexperience.com, Facebook: CostaricaRainForestExperience, (506) 8840-4686

Ecology Guide Development Program as Path to Community Empowerment and Equitable Access to Nature

8:30 AM-10:00 AM, Throughbred 4 Families in Nature is empowering leaders from under-resourced and underrepresented communities to take families out into nature through our Guide Development Program and our Ecologist School Science program. Come learn about the Ecologist School and how we are building the next generation of conservation leaders. Presenters: Heather Kulkken, Families in Nature

Engaging New Audiences with Public Lands Through Photography

8:30 AM-10:00 AM, Regency Ballroom 2 Learn how Parks in Focus and some of its National Park Service partners use digital photography to engage underserved and underrepresented communities with our public lands. Experience activities in their curriculum and leave with resources and inspiration to expand your environmental education toolkit. No photography experience or camera required. Presenters: Bret Muter, Udall Foundation, Parks in Focus Program; Veronica Greear, National Park Service

Interactive Session on Social and Emotional Learning in Residential EE

8:30 AM-10:00 AM, Heritage Ballroom 2 In this interactive session, we will share the process and products of a yearlong partnership of eleven residential EE organizations that focused on social and emotional learning (SEL) and was informed by research. Participants will engage in hands-on activities typical of an EE program, intentionally structured to maximize SEL outcomes. Presenters: Kathleen O'Connor, NatureBridge; Estrella Rinalgin, California Association for Environmental & Outdoor Education; Emily Williams, Stanford University

Creating and Evaluating Collective Outcomes for EE

8:30 AM-9:10 AM, Beraa How can we tell our story more effectively to advance environmental education? Which measures speak the loudest? Join us to discuss what we've learned from practitioners, funders, researchers, and national experts to help create and evaluate collective outcomes in Colorado. Presenters: Katie Navin, Colorado Alliance for Environmental Education



Friday

Lexington at Leisure

Coffee Tour 6:30 AM-8:15 AM. Meet at the registration desk. Get to know Lexington with this guided walk around downtown. From historic buildings to art installations, learn about what makes Lexington unique while enjoying local coffee or tea. Free. No registration required.

Morning Yoga: From Awareness to Action

7:30 AM-8:15 AM, Patterson E-G Wake to the new day with awareness of breath, movement, and alignment. Through this gentle practice, reconnect with your body and mind's ability to move intentionally throughout the actions of the day. Instructor Pam Thomas is certified by and registered with the Yoga Alliance.

Friday 8:30 AM

Symposium

8:30 AM-6:00 PM

Integrating Archaeology and Environmental Education to Strengthen Cultural Understanding

8:30 AM-10:00 AM, Kentucky Archaeologists study human adaptation to the natural world, the importance of the environment to past peoples, and how human activity is influenced by place, all of which intersect with EE. Archaeology educators will discuss how EE impacts their programming and partnerships and how to continue to integrate the two fields. Presenters: Derrick Baldwin, Bureau of Land Management; A. Henderson, Kentucky Archeological Survey; Jeanne Moe, Bureau of Land Management; William Quakenbush, Ho-Chunk Nation of Wisconsin; Elizabeth Rouse, University of Iowa Office of the State Historian; Arlene M. Land Management Moderator: Janet Carrier Ady, Bureau of Land Management

Hands-On Presentations

8:30 AM-10:00 AM

Bridging the Gap Between Environmental Justice and Environmental Education

8:30 AM-10:00 AM, Heritage Ballroom 1 Ecosystem health and the health of communities are inextricably linked. It is often minority populations that carry the impacts of the weightiest environmental problems. In this session we will discuss justice, equity, diversity, and inclusion in EE and the social justice strategies needed to see work towards a equitable future. Presenters: Parker McMullen Bushman, Butterfly Pavilion

Clams Don't Breathe Watershed Education and Service Learning Using Oysters

8:30 AM-10:00 AM, Regency Ballroom 1 Join us to learn about a watershed education program that integrates the study of filter-feeding bivalves such as clams, oysters, and mussel; hands-on water quality measurements using "cookbook" water quality kits; and field-based service learning through the restoration of oyster reefs. Presenters: Tina Miller-Way, Dauphin Island Sea Lab

Education for a Green Economy
8:30 AM-10:00 AM, Ekhorn D
 Educating for a Green Economy identifies the various opportunities for students to develop skills needed for green jobs and to celebrate Washington State's transition toward a more sustainable future. Join the Pacific Education Institute and E3 Washington to learn more about aligning natural resource and educational professionals to support student success. Presenters: Kathryn Kurtz, Pacific Education Institute

Inviting Nature Back: From School Gardens to Energy Companies
8:30 AM-9:10 AM, Throughoutred 5
 Columbia Gas recognizes the need to invite nature back—not only into schools with nature programs and outdoor classrooms, but also to managed landscapes. Their novel program promotes pollinator habitat in school gardens and across their network of gas pipelines, connecting people and nature in a variety of ways. Presenters: John Steelman, Grow With Trees Community

NAEE's EE Policy Briefing
8:30 AM-9:10 AM, Throughoutred 3
 The importance of environmental education policy briefing. NAEE staff and volunteers will share information on federal and state policy priorities during the 116th Congress. In addition to updates on how the federal budget affects EE and how you can be a more informed advocate, we'll look at new and emerging opportunities in infrastructure, climate change, and more. Presenters: Sarah Bodor, NAEE; Brock Morris Adler, Environmental Education

Strategic Planning for Affiliates
8:30 AM-9:10 AM, Hyatt Suites
 Come learn about the strategic planning processes that the Environmental Educators of North Carolina have drawn on from research to guide us as we weave climate change into programming? This session addresses the communication barriers to and opportunities inherent in teaching about climate change. Presenters: Anne Armstrong, Cornell University

Global Goals & You: Digging into the United Nations SDGs
 Thanks to a historic United Nations Summit in 2015, all people of the planet now share a common set of global goals to be achieved by 2030. Underlying every goal? A healthy, vibrant, bioeconomy living world. Participants will dig into the Sustainable Development Goals in an interactive, dialogue-provoking way suitable for multiple audiences. Presenters: Sheila Voss, Missoula Botanical Garden; Kristina Torres, Missouri Botanical Garden

Learning From Nature: STEAM Investigations for the Elementary Classroom
 Knowledge of biological systems can connect the practical application of designing products, environmental concerns, and demystifying science to spark the imagination of young learners. Technologies inspired by nature (biomimicry) and the design of safer products and processes (green chemistry) provide an avenue to teach STEAM concepts in a dynamic manner. Presenters: Alyson VanAlphen, Beyond Benign

Bright Spots
9:30 AM-10:10 AM, Ekhorn D
 Learn about two or three successful and loosely related programs in each 40-minute session. Sessions are presented in the order listed.

GROUP A
EE 30 Under 30 Honorees
8:30 AM-9:10 AM, Ekhorn C
 Empowering Students Through Connections with Global and Local Experts
 Amazing things happen when people with different areas of expertise, like educators and scientists, collaborate. Come learn how students are empowered to work along with real scientists and National Geographic Explorers to design realistic solutions to make the world a better place. Together, we're more awesome! Presenters: Kimi Waite, California Global Education Project & National Geographic Education

Ocean Bridge: Changing Minds to Turn Tides
 Ocean Bridge, a national program in the Canada Service Corps, engages youth across Canada to co-create service projects on ocean literacy, health, and ocean conservation. This session will highlight the importance of collaboration, storytelling, and the power of youth, and will focus on tools such as community and capacity building. Presenters: Lisa Harvey, LHM Strategy Advisors, LLC; Krishna Roy, Consultant

Wild Live: Bringing Wildlife Conservation into Classrooms Across Western Canada
 Northwest Wildlife Preservation Society teaches thousands of young people across western Canada about wildlife and conservation. Learn how unique programs and collaborations connect the public with one of the most biodiverse regions in North America, using technology to bring one of nature's greatest events into the classroom, live! Presenters: Connor Bradwell, Northwest Wildlife Preservation Society

LOCAL CULTURE
 Isaac Burns Murphy was an African-American farm family, who was one of three Kentucky Derbies and considered one of the greatest riders in American Thoroughbred horse racing history. As part of Tree Week, NAEE's community service project participants will plant trees at the recently established Isaac Murphy Memorial Art Garden. The park honors the contributions of African-Americans in the horse racing industry.

48th ANNUAL NAEE CONFERENCE | LEICESTER, KY | 200

FRIDAY

GROUP B
9:20 AM-10:00 AM, Ekhorn D
An Introduction to Climate Change Communication for Environmental Educators
 Why is climate change controversial? What tools do we draw on from research to guide us as we weave climate change into programming? This session addresses the communication barriers to and opportunities inherent in teaching about climate change. Presenters: Anne Armstrong, Cornell University

Roundtable Discussions
9:20 AM-10:00 AM, Throughoutred 1
NAEE Fundraising Coaching
Table 1
 How do I start conversations that lead to bigger gifts? What are my board members more engaged in fundraising? Is this project right for corporate or foundation support? Am I doing ANY of this right? Whether you're new to fundraising or a seasoned professional, bring your questions to NAEE's fundraising roundtables. Space is limited; advance sign up at the Information Station required. Presenters: Leah Harvey, LHM Strategy Advisors, LLC; Krishna Roy, Consultant

Challenge Yourself and Your Community: Participant Observations of Your Drawdown Challenge
Table 2
 What is your role as an EE professional in creating new SDGs as a tool for making connections and exploring our existing EE programs (many of which are likely addressing multiple SDGs). Presenters: Melissa Hopkins Taggart, NAEE; Kerkishaun Batsu, Green Hope Foundation

Friday 10:30 AM
Coffee Break
10:00 AM-10:30 AM, Bluegrass Ballroom 1

Friday 10:30 AM
Meeting
10:30 AM-11:10 AM
Environmental Professionals of Color Annual Meeting
10:30 AM-11:10 AM, Throughoutred 4
 The Environmental Professionals of Color (EPOC) annual business meeting is open to EPOC members and potential members. Join us as we create a space to talk about what's on our minds, our challenges and successes, our hopes, and ways we can support one another. Co-Chair/Co-Moderator: Queta Gonzalez, Center for Diversity & the Environment

Building Leadership for Environmental Literacy
Connecting with Nature
Conservation and Environmental Education
Educating for Sustainable Communities
Green Schools and Preparing for 21st Century Careers
Linking Research and Practice to Increase Impact
Equity and Inclusion
Young Professionals
NAEE Affiliate
ee360

48th ANNUAL NAEE CONFERENCE | LEICESTER, KY | 200

FRIDAY

Teaching Citizen Science Protocol for Conservation Monitoring to Underrepresented Students
10:30 AM-11:10 AM, Heritage Ballroom 3
 The Caribbean experienced two Category 5 hurricanes in 2017. Our school then embarked on a citizen science project with Harvard University and Virgin Islands National Park to create a STEM network and career pathways for underrepresented students. Our model can be transferred to other communities building STEM engagement, practices, and resilience. Presenters: Melissa Rian Wilson, Gifted Hill School

Using a Collaborative Framework to Implement Stormwater-Focused Behavior Change Campaigns
10:30 AM-11:10 AM, Regency Ballroom 3
 Learn how Stormwater Outreach for Regional Municipalities (STORM) uses a collaborative approach to build capacity among jurisdictions in Western Washington and help them meet federal and state required education and outreach standards. See how we have regional municipalities can collaborate on equitable environmental education programs using social marketing practices. Presenters: Katherine Strass, Surface Water Division, City of Federal Way

Women at Risk Using Agriculture and Environmental Justice to Build Sustainable Communities
10:30 AM-11:10 AM, Regency Ballroom 2
 What role can at-risk women have in building just and sustainable communities? In this session participants will learn how teen mothers and women healing from domestic violence and addiction are serving as agents of change toward sustainability in their communities. Participants will be asked to share examples from their communities. Presenters: Jim Embury, Sustainable Communities Network

Sadhu for Green: Discovering Environmental Connections in the Khmer Community
 Stepping into the shoes of a Buddhist nun, shares about "Sadhu for Green," a movement created in collaboration with Venerable Prent Sa-Ngon, a young Khmer Buddhist monk. Together, they are building environmental literacy for the Khmer community through intergenerational workshops on relevant environmental topics, urban and outdoor field trips, and community celebrations. Presenters: Stephanie Ung, Seattle Parks & Recreation

Bright Spots
10:30 AM-11:10 AM
 Learn about two or three successful and loosely related programs in each 40-minute session. Sessions are presented in the order listed.

GROUP A
10:30 AM-11:10 AM, Ekhorn C
Connecting People of Faith Through Environmental Education
 Faith communities involvement in environmental work has great potential in making significant improvements to the state of the natural world. Resources are needed to engage faith-based audiences that encourage environmental literacy and stewardship. This session will explore a conceptual framework for creating environmental education curriculum resources for faith-based audiences. Presenters: Amanda Lanier, Reynolds Gardens of Wake Forest University

Learning from Local Communities: How Nature Connections Matter in Conservation
 The little doubt our daily decisions are influenced by personal values. Local community members can hold knowledge, values, and positive connections to important natural places. Join a discussion of how connections to nature research in several global communities can include marginalized voices and support pro-environmental actions in conservation. Presenters: Jill Korach, Miami University

Sadhu for Green: Discovering Environmental Connections in the Khmer Community
 Stepping into the shoes of a Buddhist nun, shares about "Sadhu for Green," a movement created in collaboration with Venerable Prent Sa-Ngon, a young Khmer Buddhist monk. Together, they are building environmental literacy for the Khmer community through intergenerational workshops on relevant environmental topics, urban and outdoor field trips, and community celebrations. Presenters: Stephanie Ung, Seattle Parks & Recreation

Building Leadership for Environmental Literacy
Connecting with Nature
Conservation and Environmental Education
Educating for Sustainable Communities
Green Schools and Preparing for 21st Century Careers
Linking Research and Practice to Increase Impact
Equity and Inclusion
Young Professionals
NAEE Affiliate
ee360

48th ANNUAL NAEE CONFERENCE | LEICESTER, KY | 200

Traditional Presentations
9:20 AM-10:00 AM
AmeriCorps: Expanding Environmental Literacy Through National Service
9:20 AM-10:00 AM, Berea
 Increase the capacity of multiple agencies within your state to provide quality environmental education by developing an environmental stewardship-focused AmeriCorps program. This session will explore ways that your state could benefit from using AmeriCorps members to increase the environmental education capacity of a wide range of EE providers. Presenters: Billy Bennett, Kentucky Environmental Education Council; Ashley Hoffman, Kentucky Association for Environmental Education; Ashley Mike, Kentucky Environmental Education Council

Developing Stewardship Through Exploration
9:20 AM-10:00 AM, Throughoutred 2
 Join our National Geographic and Lindblad Expeditions Greater Teacher Fellows to hear about their field experiences in Galapagos and Antarctica as well as how they brought it to their educational areas. Experience classroom activities they created based on their experiences and how it has transformed their teaching and students. Presenters: Becky Schneider, Cape Henry College; Katherine Golden, Missouri Botanical Garden; Moderator: Fay Gore, National Geographic Society

Early Childhood Education in the Anthropocene Age: Business as Usual
9:20 AM-10:00 AM, Ekhorn B
 This session argues that early childhood education cannot remain "as is" any longer. The state of early childhood education is discussed as a backdrop in highlighting the need for change. Recommendations for physical and psychological environments that counter current trends are discussed. Presenters: Yash Bhagwanji, Florida Atlantic University

Watershed Education: The Good, the Bad, and the Meh
9:20 AM-10:00 AM, Regency Ballroom 3
 Come listen to ecologists present on more than a decade's worth of environmental education programs. While we have had a great success over the years, we have had our share of failures as well. Learn about the good, the bad, and the meh of program planning. Presenters: Danielle Wynne, Stormwater Planning

What Are We Learning About Deliberating Environmental Issues?
9:20 AM-10:00 AM, Throughoutred 3
 What do community members gain from participating in deliberative forums? As part of NAEE's partnership with the Kettering Foundation, we've been holding deliberative forums, focusing on climate change and local water issues, across the country. Come hear what we've been learning about forum participants' motivations, expectations, and sense of efficacy. Presenters: Christine Ji-Li, University of Missouri; Martha Monroe, University of Florida; Ileana Marin, Kettering Foundation; Bora Simmonds, National Project for Excellence in Environmental Education

48th ANNUAL NAEE CONFERENCE | LEICESTER, KY | 201

FRIDAY

Diversity, Equity, and Inclusion: Strengths & Growing Edges at Multiple Scales
Table 4
 Environmental organizations are learning into diversity, equity, and inclusion (DEI), changing the course of our collective work to be more inclusive. Come to this session to consider your organizational DEI strengths and growing edges, and gather resources to inform future efforts. Some foundational understanding of DEI themes is value-added. Presenters: Luciana Ranelli, Teton Science Schools; Libby McCann, Antioch University New England; Jean Chimbrira Kayira, Antioch University New England; Anne Umali, NAEE

Addressing Climate Change Through EE
10:30 AM-11:10 AM, Kenyon
 The United Nations Framework Convention on Climate Change emphasizes EE as a driver for mitigation and adaptation through ACE or Action for Education on Climate Change. This session will discuss ways to impact the ACE work program for 2020-2030. The Centre for Environmental Education will present case studies on EE's crucial role in addressing climate change, followed by recommendations for the work program. Presenters: Kartikaya Sarabhai

Creating and Fostering "Super Citizens" Through Environmental Academies
10:30 AM-11:10 AM, Ekhorn A
 How do you grow local environmental "super citizens"? Give them the knowledge and tools they need to grow their impact. Lexington offers free training through the Citizens' Environmental Academy for teachers. The Citizens' Environmental Academy, designed to educate the public on a variety of issues related to the city's Department of Environmental Quality and Public Works. Presenters: Angela Poe, City of Lexington, KY; Chrissy Tune, Lexington-Fayette Urban County Government; Danny Williams, Bluegrass Greenways; Patti Steudinger, Bluegrass Greensource

Design Your Outdoor Classroom for All
10:30 AM-11:10 AM, Throughoutred 5
 We will discuss the process for planning and implementing inclusive and accessible outdoor learning environments for preK-12, the whos, hows, whys, and whats of starting an outdoor classroom at your school, from curriculum and autism to financing, the whole community is important. Presenters: Edward Melvin, SHP

Diving into the Digital World of Online Learning
10:30 AM-11:10 AM, Ekhorn B
 Ocean Wise will lead a discussion on activating ocean education through online learning environments. Through innovative digital, social, and video conferencing initiatives guided by the seven Ocean Literacy Principles, discover how connecting with geographically diverse communities can provide opportunities for protecting our oceans. Presenters: Stephanie Chung, Ocean Wise; Myla Anton, Ocean Wise

EE Certification and NAEE Accreditation: Here's What's New!
10:30 AM-11:10 AM, Hyatt Suites
 Learn about NAEE's revised requirements and simplified application process for the NAEE EE Certification programs, along with new benefits of becoming accredited. In addition, provide input and help us further develop the new blueprint for creating new certification programs. Presenters: Lori Mann, NAEE; Anne Umali, NAEE

Integrating Scientific Literacy in Environmental Education
10:30 AM-11:10 AM, Regency Ballroom 1
 Pseudoscience, conspiracy theories, and/or inability to determine "good" versus "bad" experimental design are hurdles that environmental educators must overcome to engage a diverse audience in learning. In this session, learn how a community college tackled the problem by creating a new general education science literacy class. Presenters: Justin Weiss, Marysville Community and Technical College

Learning About Diversity, Equity, and Inclusion Through an Online Course
Table 5
 This roundtable will share assignments, readings, and discussion activities used in an online course for undergraduate students on diversity, equity, and inclusion in natural resource settings. Discuss techniques for engaging students and encouraging feedback. Swap resources and ideas appropriate for higher education and professional development settings. Presenters: Kendra Lidiccat, University of Wisconsin-Stevens Point

The Value of Statewide EE Surveys: Wisconsin and Pennsylvania Examples
Table 5
 Policy 90191 statewide EE surveys in Wisconsin and Pennsylvania will prompt discussions about survey design, topics, methods for sharing results, and purposeful use of results as data-driven research to address the ever changing landscape of EE, professional development, and collective efforts of EE organizations to better serve our audiences. Presenters: Steve Koenig, Lower Merion Research Center; Justin Hougham, University of Wisconsin-Madison

48th ANNUAL NAEE CONFERENCE | LEICESTER, KY | 201

FRIDAY

Roundtable Discussions
10:30 AM-11:10 AM, Throughoutred 1
NAEE Fundraising Coaching
Table 4
 How do I start conversations that lead to bigger gifts? How can I get my board members more engaged in fundraising? Is this project right for corporate or foundation support? Am I doing ANY of this right? Whether you're new to fundraising or a seasoned professional, bring your questions to NAEE's fundraising roundtables. Space is limited; advance sign up at the Information Station required. Presenters: Leah Harvey, LHM Strategy Advisors, LLC; Krishna Roy, Consultant

EE Case Studies to Teach and Inspire
Table 5
 This interactive discussion will explore how case studies can be used to teach and to demonstrate effective practice in EE. Participants will be encouraged to analyze their own EE programs through a case study approach, and to discuss lessons learned. This discussion will help shape a e-book being developed by the Global Environmental Education Partnership. Presenters: Alex Kudryavtsov, Cornell University; Melissa Hopkins Taggart, NAEE

Gardens as Strategic Spaces for Environmental Education: Epistemology, Connection, and Justice
Table 3
 Gardens have a growing importance in urban areas nowadays. They serve as spaces for recreation, education, and reconnection with nature. It is important to examine the educational and environmental roles of these spaces considering their colonial history and potential to serve as conducive spaces for inclusion and transgenerational multi-human relationships. Presenters: Esther Logo P. Pretti, Arizona State University

Learning About Diversity, Equity, and Inclusion Through an Online Course
Table 5
 This roundtable will share assignments, readings, and discussion activities used in an online course for undergraduate students on diversity, equity, and inclusion in natural resource settings. Discuss techniques for engaging students and encouraging feedback. Swap resources and ideas appropriate for higher education and professional development settings. Presenters: Kendra Lidiccat, University of Wisconsin-Stevens Point

Friday 11:30 AM
Plenary Session
11:30 AM-12:45 PM, Bluegrass Ballroom 2
Friday Flash Talks: Educating for a Just and Sustainable Future
 Kathy Abusov, Kevin Butt, Nikole Collins-Pur, and Simone Friedman Moderated by Anupama Joshi

Building Leadership for Environmental Literacy
Connecting with Nature
Conservation and Environmental Education
Educating for Sustainable Communities
Green Schools and Preparing for 21st Century Careers
Linking Research and Practice to Increase Impact
Equity and Inclusion
Young Professionals
NAEE Affiliate
ee360

48th ANNUAL NAEE CONFERENCE | LEICESTER, KY | 200

Governance: Boards Making a Difference
9:20 AM-10:00 AM
 A check-in on the qualities and features of high-performing nonprofits, especially those run by "working" boards: well-drafted bylaws, critical regulatory compliance, sound board policies, and innovative governance models. Presenters: Adrian Jaynes, eValuators Consulting; Alex Purgura, Utah Society for Environmental Education; LoriAnne Barnett, Arizona Association for Environmental Education; Laura Collard, Maryland Association for Environmental and Outdoor Education

Nature Centers: Relevant in the Age of Climate Change?
9:20 AM-10:00 AM, Throughoutred 5
 What is the role of nature centers in the age of climate change? This session is designed for nature center staff who are interested in collectively problem solving how we can play a critical role in mobilizing people to take action on climate change at the community scale. Presenters: Kristin Scopnic, Mass Audubon; Michelle Edman, Connecticut Outdoor Society

Watershed Education: The Good, the Bad, and the Meh
9:20 AM-10:00 AM, Regency Ballroom 3
 Come listen to ecologists present on more than a decade's worth of environmental education programs. While we have had a great success over the years, we have had our share of failures as well. Learn about the good, the bad, and the meh of program planning. Presenters: Danielle Wynne, Stormwater Planning

What Are We Learning About Deliberating Environmental Issues?
9:20 AM-10:00 AM, Throughoutred 3
 What do community members gain from participating in deliberative forums? As part of NAEE's partnership with the Kettering Foundation, we've been holding deliberative forums, focusing on climate change and local water issues, across the country. Come hear what we've been learning about forum participants' motivations, expectations, and sense of efficacy. Presenters: Christine Ji-Li, University of Missouri; Martha Monroe, University of Florida; Ileana Marin, Kettering Foundation; Bora Simmonds, National Project for Excellence in Environmental Education

Design Your Outdoor Classroom for All
10:30 AM-11:10 AM, Throughoutred 5
 We will discuss the process for planning and implementing inclusive and accessible outdoor learning environments for preK-12, the whos, hows, whys, and whats of starting an outdoor classroom at your school, from curriculum and autism to financing, the whole community is important. Presenters: Edward Melvin, SHP

Diving into the Digital World of Online Learning
10:30 AM-11:10 AM, Ekhorn B
 Ocean Wise will lead a discussion on activating ocean education through online learning environments. Through innovative digital, social, and video conferencing initiatives guided by the seven Ocean Literacy Principles, discover how connecting with geographically diverse communities can provide opportunities for protecting our oceans. Presenters: Stephanie Chung, Ocean Wise; Myla Anton, Ocean Wise

EE Certification and NAEE Accreditation: Here's What's New!
10:30 AM-11:10 AM, Hyatt Suites
 Learn about NAEE's revised requirements and simplified application process for the NAEE EE Certification programs, along with new benefits of becoming accredited. In addition, provide input and help us further develop the new blueprint for creating new certification programs. Presenters: Lori Mann, NAEE; Anne Umali, NAEE

Integrating Scientific Literacy in Environmental Education
10:30 AM-11:10 AM, Regency Ballroom 1
 Pseudoscience, conspiracy theories, and/or inability to determine "good" versus "bad" experimental design are hurdles that environmental educators must overcome to engage a diverse audience in learning. In this session, learn how a community college tackled the problem by creating a new general education science literacy class. Presenters: Justin Weiss, Marysville Community and Technical College

48th ANNUAL NAEE CONFERENCE | LEICESTER, KY | 102

FRIDAY

Lessons From an Environmental Education "State of the State" Initiative
10:30 AM-11:10 AM, Heritage Ballroom 2
 How can we facilitate meaningful environmental education in both formal and informal learning contexts. This session will share findings from best practices. Hear our findings on using EE curricula to increase teacher candidates' technology integration mastery and creating integrated lessons/activities. Presenters: Brenda Weiser, University of Houston-Clear Lake

Preservice Teachers Learning to Teach Through Hydroponic Gardening
 In this session, we will share ways that teaching and learning with hydroponic gardens has supported and strengthened the Environmental Sustainability Education initiative at The College of New Jersey. We will discuss our partnerships with schools and the integration of hydroponic gardens in our coursework with preservice teachers. Presenters: Louise Ammentorp, The College of New Jersey

Making Meaning of Citizen Science Data
10:30 AM-11:10 AM, Heritage Ballroom 1
 How can we facilitate meaningful environmental learning using citizen science data? We will unpack an example lesson and share free resources that engage students in asking and answering questions of citizen science using data fieldScience, a platform for data collection and analysis. Bring a laptop if you can. Presenters: Emily Harris, BCSC Science Learning; Audrey Mohan, BCSC Science Learning; Sean O'Connor, BCSC Science Learning

Naming and Framing Environmental Issues for PreK-12
10:30 AM-11:10 AM, Throughoutred 2
 How can you structure conversations that facilitate productive, public education about controversial issues? How can you capture what it is that people hold dear and how they talk about issues in every day life? Come hear how the Kettering Foundation, NAEE, and partners have been applying an "issue framing" process to a variety of environmental concerns, including climate change and water. Presenters: Amanda Lanier, Reynolds Gardens of Wake Forest; Sarah R. Johnson, Will Ross Education; Natalie Cooper, University of Florida; Bora Simmonds, National Project for Excellence in Environmental Education

Partnering for K-12 Environmental Literacy
10:30 AM-11:10 AM, Throughoutred 3
 NAEE, Project Learning Tree, and Upstream Alliance have partnered to support school administrators in the integration of environmental education throughout their school districts. Districts often need partners to help them with their ambitious literacy goals. Come find out how you can work more effectively with school systems and share your own success stories. Presenters: Sarah Bodor, NAEE; Esther Cowles, Project Learning Tree

Building Leadership for Environmental Literacy
Connecting with Nature
Conservation and Environmental Education
Educating for Sustainable Communities
Green Schools and Preparing for 21st Century Careers
Linking Research and Practice to Increase Impact
Equity and Inclusion
Young Professionals
NAEE Affiliate
ee360

48th ANNUAL NAEE CONFERENCE | LEICESTER, KY | 105

FRIDAY

Advocacy, Policy, and Civic Engagement, Throughoutred 1
Climate Change Education, Regency Ballroom 1
Connecting with Nature, Heritage Ballroom 3
Conservation and Behavior Change, Heritage Ballroom 3
Data Equity, Heritage Ballroom 2
ESTEM Education, Throughoutred 4
Equity and Inclusion, Heritage Ballroom 1
Global EE, Throughoutred 1
Guidelines for Excellence, Regency Ballroom 2
Higher Education, Regency Ballroom 3

Building Leadership for Environmental Literacy
Connecting with Nature
Conservation and Environmental Education
Educating for Sustainable Communities
Green Schools and Preparing for 21st Century Careers
Linking Research and Practice to Increase Impact
Equity and Inclusion
Young Professionals
NAEE Affiliate
ee360

48th ANNUAL NAEE CONFERENCE | LEICESTER, KY | 105

Building Leadership for Environmental Literacy
Connecting with Nature
Conservation and Environmental Education
Educating for Sustainable Communities
Green Schools and Preparing for 21st Century Careers
Linking Research and Practice to Increase Impact
Equity and Inclusion
Young Professionals
NAEE Affiliate
ee360

48th ANNUAL NAEE CONFERENCE | LEICESTER, KY | 105

Symposium
2:15 PM-3:45 PM
Establishing a Foundation for Action: Outcomes That Predict Commitment Stewardship
2:15 PM-3:45 PM, Kentucky
How can environmental education researchers and practitioners provide key experiences that predict a lifelong commitment to engage with nature and care for the natural world? This symposium shows how to identify and assess intermediate outcomes that provide pathways to this goal, including social identities, place identities, and connection to nature.
Presenters: Louise Chawla, University of Colorado Boulder; Steven Jackson, North Carolina State University; Anne Armstrong, Cornell University; Moderator: Yue Lu, Cornell University

Hands-On Presentations
2:15 PM-3:45 PM
Affiliate Committee Working Session
2:15 PM-3:45 PM, Hyatt Suites
Are you a part of an Affiliate Committee or interested in getting involved? Learn about the opportunities and join a group to move forward network efforts on communication and marketing, equity, diversity, and inclusion, building an Affiliate toolkit, awards and recognition, professional development, grant fundraising, or advocacy. Committees meet virtually for the rest of the year.

Caterpillars Count! Engaging Visitors in Monitoring the Phenology of Bird Food
2:15 PM-3:45 PM, Regency Ballroom 1
The potential for birds to become mismatched with food sources on which they depend is a real consequence of climate change. Join the Caterpillars Count network and learn how to engage visitors through science learning, contributing valuable information to research linking birds to their arthropod food sources on trees.
Presenters: Sarah Yelton, UNC Institute for the Environment

Designing Meaningful Tasks to Assess Environmental Literacy
2:15 PM-3:45 PM, Throughout 4
Assessing environmental literacy is difficult, and most assessments are not engaging or differentiated. A RAFT task (Tomlinson, 2003) provides students with choices, sparks creativity, and can elicit students' knowledge, attitudes, and skills. Come try out some ER RAFT tasks, reflect on student work, and brainstorm RAFT ideas with colleagues.
Presenters: Ellen Merritt, Arizona State University

Exploring Worldviews and Environmental Education Practice
2:15 PM-3:45 PM, Heritage Ballroom 1
To be effective environmental educators, we must understand how people think and what motivates them to hold certain positions. Join us as we explore commonly held worldviews and environmental worldviews. We will examine our own beliefs and biases and how to more effectively communicate with diverse worldview audiences.
Presenters: Brad Daniels, Grand Nature TRC; Training Research, Education, Consulting; Holly Dehch, Environmental Education Alliance of Georgia; W. Fairfield, Montreal College

Queer 101: Allyship and Intersectionality
2:15 PM-3:45 PM, Heritage Ballroom 2
What does it mean to be an ally? What does it take to use your power and privilege to support those with less power and privilege? Through a series of exercises and discussions, we'll share best practices for engaging in effective allyship with the queer community.
Presenters: Charissa Jones, OSU Extension Service; Outdoor School; Rochelle Gaudour-Rood, Tacoma Water; Jenna Mendenhall, Oregon Environmental Literacy Program

Pathways to Advance Green Schools
Table 4
Join the discussion with Missouri Green Schools leadership about how to increase participation in Green Ribbon Schools through statewide feeder programs. We will discuss challenges and opportunities that exist to attract and support schools as they progress along the green spectrum, especially underrepresented rural and urban core schools.
Presenters: Leah Moylan, Missouri Environmental Worldviews; Hope Gribble, U.S. Green Building Council-Missouri Gateway Chapter

Questions About Conducting Ethically Inclusive Research for Sustainable Communities
Table 5
Contextualized in a regional Australian research setting, participants in this session will be invited into a spirited conversation in which they are encouraged to grapple with critical questions about researchers' ethical, epistemological, methodological, and representational responsibilities when undertaking sustainability education research in marginalized rural communities.
Presenters: Sherie McClain, Manhattantown College

Creating Meaningful Experiences for Diverse Students in National Parks
Table 2
The National Park Foundation supports new interpretive approaches to engage underserved students, share meaningful history, and remove barriers of participation in national parks. In this session we will explore recent activities including fellowship to enhance LGBTQ+, civil rights, and labor history, and the impact of 4th grade teacher reinterpretation of a National Historic Site.
Presenters: Karen Lee, National Park Foundation; Alexander Lerango, National Park Foundation

Empower Youth through Social Enterprise, Sustainability, and Collaboration
Table 3
Learn how eco360 Fellows from the Chicago Eco House, Get Down Farm, and EcoRIse collaborated to implement a place-based social enterprise model as an environmental education strategy to help youth solve real-world challenges in disadvantaged communities in Chicago and Detroit.
Presenters: Anthony Ramirez, EcoRIse; Quinn Blackwell, Chicago Eco House; Anita Singh, Get Growing Detroit

From Urban to Rural and Back Again: Blazing the Path for EE Careers
4:00 PM-4:40 PM, Throughout 5
This session will showcase our experiences designing and implementing EE programming that inspires growth, professional development, and career pathways for future environmental educators. We will highlight two initiatives that span urban and rural environments featuring Slippery Rock University, Pittsburgh Public Schools, and Phlips Conservation, drawing from faculty, student, and practitioner perspectives.
Presenters: Rebecca Thomas, Slippery Rock University; Shawn Davis, Slippery Rock University; Christine Walsh, Slippery Rock University; Linda Zane, Slippery Rock University; Heather Shannon, Phlips Conservatory; Paul Hedrick, Robert A. Macksosky Center; Sadie McNulty, Macksosky Center; Erin Mackenstein, Slippery Rock University

Garbage and Greenways: Industry and Nature CAN Coexist
4:00 PM-4:40 PM, Throughout 2
The Solid Waste Authority of Palm Beach County, with the protection of land and nature can coexist! During this presentation, participants will learn why the SWA Greenway Trail System was created and how we connect place-based environmental education with solid waste management and the importance of conserving natural resources.
Presenters: Dawn Davis, Solid Waste Authority of Palm Beach County; Mary Wozny, Solid Waste Authority of Palm Beach County

Promoting Energy Literacy Among Educators to Inspire Students for Green Careers
4:00 PM-4:40 PM, Throughout 3
Learn about the NC Energy Literacy Fellows Program, a long-duration professional development experience for educators that combines STEM-based investigations with place-based explorations of energy production and research facilities to promote the knowledge and skills that will be needed to build a diverse and innovative green workforce.
Presenters: Dana Haine, University of North Carolina-Charlotte; Institute for the Environment

Radio Killed the Video Star: Outreach to Better Serve Latino Communities
4:00 PM-4:40 PM, Throughout 5
Lexington is a diverse city with a rising Spanish-speaking population. In an effort to increase outreach, we rethought our video series in favor of entertainment—radio! Presenters will talk about how we incorporate all things green in our show, Lexington en Verde, aired through Lexington Community Radio.
Presenters: Angela Pao, City of Lexington, KY

The Effect of Differentiated Instruction Training on Education Trainees
4:00 PM-4:40 PM, Heritage Ballroom 1
The Education Trainees at Hawk Mountain Sanctuary incorporates the teaching and modeling of diverse teaching strategies that relate to how students understand and process information differently. Reflective journaling, identity maps, weekly seminars, personal interviews, and teacher feedback surveys of trainee facilitated programs are used to assess the program's effectiveness.
Presenters: Erin Brown, Kutztown University

The Impact of Field Internships for Urban Teenage Girls
4:00 PM-4:40 PM, Heritage Ballroom 2
There is nothing like going out to the field to explore a career. Hear from two of our urban high school girls who a week of fossil hunting or wetland studies, with scientists that look like them, was the perfect hook to see the reality of what scientists do.
Presenters: Betsy Payne, Academy of Natural Sciences of Drexel University; Arianna Alfaro, Women in Science and Technology, Women In Natural Science of Drexel University

Trillium Sustainability Workshop: Incorporating EE Across the Curriculum
4:00 PM-4:40 PM, Heritage Ballroom 2
Offered annually, Trillium has evolved from a training opportunity to an inter-institutional and interdisciplinary learning network. Our goal is to share lessons learned and inspire others to create similar workshops and networks to support formal and nonformal EE in new and diverse spaces.
Presenters: Noelle Wyrzycki, Roth, Duke University; Charlotte Clark, Duke University

Water, Wind, and Fire: How to Rock Community & Citizen Science
4:00 PM-4:40 PM, Berea
Community and citizen science is a meaningful way to engage learners while enhancing the scientific understanding of the local world. Hear about three projects focused on air quality, climate change, and water quality, then learn time and money saving tips for your own community and citizen science or field trip friends.
Presenters: Nina Suzuki, University of California-Davis; Elizabeth Spike, Fairfax County Public Schools

Bright Spots
3:05 PM-3:45 PM
Learn about two or three successful and loosely related programs in each 40-minute session. Sessions are presented in the order listed.
GROUP A
2:15 PM-2:55 PM, Throughout 3
Community and citizen science is a meaningful way to engage learners while enhancing the scientific understanding of the local world. Hear about three projects focused on air quality, climate change, and water quality, then learn time and money saving tips for your own community and citizen science or field trip friends.
Presenters: Nina Suzuki, University of California-Davis; Elizabeth Spike, Fairfax County Public Schools

Reframing Standards to Pursue Environmental Justice: Lessons From Community Environmentalism
2:15 PM-2:55 PM, Throughout 3
Communities predominately of color and low socioeconomic status face disproportionately severe industrialized environmental risk and often lack efficacy to confront it. Community-based education programs increasingly address these concerns, offering models for empowerment. Their work provides important guidance for those seeking to further environmental justice via public school education.
Presenters: Kevin Wickenham, Texas Association for Environmental Education

School Pollinator Garden Project
2:15 PM-2:55 PM, Ekhorn A
This session showcases the results of a year-long project to establish pollinator gardens and provide relevant educational resources for 20 schools in Central Kentucky. We will illustrate the importance of community collaboration to create a powerful partnership that builds capacity to achieve community and societal ways of increased benefits.
Presenters: Jill Embury, Sustainable Communities Network; John Steelman, Grow With Trees Company

Shaping Little Ecological Worldviews: Exploring Ecological Identity in Early Childhood
2:15 PM-2:55 PM, Throughout 5
Ecological worldviews, deep mental patterns, and societal ways of looking at the world, from the natural world, can be influenced through environmental education. Children draw closer to nature through nature play and environmental education. Presenters: Victoria Brussefer, Will Haven Forest Institute; Sarah Haines, Towson University

Using eRESEARCH to Bridge the Research to Practice Gap
3:05 PM-3:45 PM, Ekhorn B
Curious about how you could apply research to improve your work? This session will explore the features and content of eRESEARCH, a joint project of NAAEE and the Children & Nature Network. This session will include a demonstration and scavenger hunt to introduce participants to thousands of easily-digestible summaries on connecting children to nature and environmental education.
Presenters: Charlotte Clark, Duke University; Noelle Wyrzycki, Roth, Duke University

Reframing Standards to Pursue Environmental Justice: Lessons From Community Environmentalism
2:15 PM-2:55 PM, Throughout 3
Communities predominately of color and low socioeconomic status face disproportionately severe industrialized environmental risk and often lack efficacy to confront it. Community-based education programs increasingly address these concerns, offering models for empowerment. Their work provides important guidance for those seeking to further environmental justice via public school education.
Presenters: Kevin Wickenham, Texas Association for Environmental Education

School Pollinator Garden Project
2:15 PM-2:55 PM, Ekhorn A
This session showcases the results of a year-long project to establish pollinator gardens and provide relevant educational resources for 20 schools in Central Kentucky. We will illustrate the importance of community collaboration to create a powerful partnership that builds capacity to achieve community and societal ways of increased benefits.
Presenters: Jill Embury, Sustainable Communities Network; John Steelman, Grow With Trees Company

Shaping Little Ecological Worldviews: Exploring Ecological Identity in Early Childhood
2:15 PM-2:55 PM, Throughout 5
Ecological worldviews, deep mental patterns, and societal ways of looking at the world, from the natural world, can be influenced through environmental education. Children draw closer to nature through nature play and environmental education. Presenters: Victoria Brussefer, Will Haven Forest Institute; Sarah Haines, Towson University

Using eRESEARCH to Bridge the Research to Practice Gap
3:05 PM-3:45 PM, Ekhorn B
Curious about how you could apply research to improve your work? This session will explore the features and content of eRESEARCH, a joint project of NAAEE and the Children & Nature Network. This session will include a demonstration and scavenger hunt to introduce participants to thousands of easily-digestible summaries on connecting children to nature and environmental education.
Presenters: Charlotte Clark, Duke University; Noelle Wyrzycki, Roth, Duke University

Research and Practice: Living in and Linking Two Worlds
3:05 PM-3:45 PM, Throughout 5
Worlds collided for the presenter when she chose to move from an academic position into a role as director of a small science museum. Using this unique insight, the presenter will highlight ways in which academics can approach work with small museums, and vice versa in order to develop lasting, positive collaborations.
Presenters: Shelby Gull Laird, NC Museum of Natural Sciences at Whiteville

Green Amendments for the Generations: Recognizing and Protecting Inalienable Environmental Rights
3:05 PM-3:45 PM, Throughout 2
While we have many rights in this nation, environmental rights are not among them. It's time to empower communities to secure their environmental rights: to pull from a system of laws that accommodate pollution, to a system of laws prevents degradation through the passage of constitutional Green Amendments.
Presenters: Maya van Rossum, Green Amendments for the Generations & Delaware Riverkeeper Network

Not Just a Sustainable Future: Education and the Global Wealth Gap
3:05 PM-3:45 PM, Ekhorn B
Presenters: Anthony Klob-Olsunsky, Osm State University; Patricia Glazebrook, Washington State University

Earth Day 2020: The Power of the Teach-In
3:05 PM-3:45 PM, Ekhorn A
Teach-ins were an important tool to mobilize citizens for the first Earth Day in 1970. For the 50th anniversary in 2020, we are calling on educators around the world to host teach-ins on locally important environmental issues to get the message out and to help integrate environmental education and civic action.
Presenters: Tracey Ann Ritchie, Earth Day Network; Kira Hoeschen, Earth Day Network

Ecological Literacy and Transformation in a Global Agricultural Learning Network
3:05 PM-3:45 PM, Berea
This session explores how an environmental learning network might contribute to transformative, equity-oriented shifts towards sustainability. Participants will examine a case study of the Savory Global Network, whose purpose is to foster the wide-scale adoption of holistic management, a mode of applied sustainability education and frangeland management.
Presenters: Lee Franklin-Goldwater, University of Colorado-Boulder

Green Amendments for the Generations: Recognizing and Protecting Inalienable Environmental Rights
3:05 PM-3:45 PM, Throughout 2
While we have many rights in this nation, environmental rights are not among them. It's time to empower communities to secure their environmental rights: to pull from a system of laws that accommodate pollution, to a system of laws prevents degradation through the passage of constitutional Green Amendments.
Presenters: Maya van Rossum, Green Amendments for the Generations & Delaware Riverkeeper Network

Not Just a Sustainable Future: Education and the Global Wealth Gap
3:05 PM-3:45 PM, Ekhorn B
Presenters: Anthony Klob-Olsunsky, Osm State University; Patricia Glazebrook, Washington State University

Water, Wind, and Fire: How to Rock Community & Citizen Science
4:00 PM-4:40 PM, Berea
Community and citizen science is a meaningful way to engage learners while enhancing the scientific understanding of the local world. Hear about three projects focused on air quality, climate change, and water quality, then learn time and money saving tips for your own community and citizen science or field trip friends.
Presenters: Nina Suzuki, University of California-Davis; Elizabeth Spike, Fairfax County Public Schools

Bright Spots
3:05 PM-3:45 PM
Learn about two or three successful and loosely related programs in each 40-minute session. Sessions are presented in the order listed.
GROUP A
2:15 PM-2:55 PM, Throughout 3
Community and citizen science is a meaningful way to engage learners while enhancing the scientific understanding of the local world. Hear about three projects focused on air quality, climate change, and water quality, then learn time and money saving tips for your own community and citizen science or field trip friends.
Presenters: Nina Suzuki, University of California-Davis; Elizabeth Spike, Fairfax County Public Schools

Reframing Standards to Pursue Environmental Justice: Lessons From Community Environmentalism
2:15 PM-2:55 PM, Throughout 3
Communities predominately of color and low socioeconomic status face disproportionately severe industrialized environmental risk and often lack efficacy to confront it. Community-based education programs increasingly address these concerns, offering models for empowerment. Their work provides important guidance for those seeking to further environmental justice via public school education.
Presenters: Kevin Wickenham, Texas Association for Environmental Education

School Pollinator Garden Project
2:15 PM-2:55 PM, Ekhorn A
This session showcases the results of a year-long project to establish pollinator gardens and provide relevant educational resources for 20 schools in Central Kentucky. We will illustrate the importance of community collaboration to create a powerful partnership that builds capacity to achieve community and societal ways of increased benefits.
Presenters: Jill Embury, Sustainable Communities Network; John Steelman, Grow With Trees Company

Shaping Little Ecological Worldviews: Exploring Ecological Identity in Early Childhood
2:15 PM-2:55 PM, Throughout 5
Ecological worldviews, deep mental patterns, and societal ways of looking at the world, from the natural world, can be influenced through environmental education. Children draw closer to nature through nature play and environmental education. Presenters: Victoria Brussefer, Will Haven Forest Institute; Sarah Haines, Towson University

Using eRESEARCH to Bridge the Research to Practice Gap
3:05 PM-3:45 PM, Ekhorn B
Curious about how you could apply research to improve your work? This session will explore the features and content of eRESEARCH, a joint project of NAAEE and the Children & Nature Network. This session will include a demonstration and scavenger hunt to introduce participants to thousands of easily-digestible summaries on connecting children to nature and environmental education.
Presenters: Charlotte Clark, Duke University; Noelle Wyrzycki, Roth, Duke University

Research and Practice: Living in and Linking Two Worlds
3:05 PM-3:45 PM, Throughout 5
Worlds collided for the presenter when she chose to move from an academic position into a role as director of a small science museum. Using this unique insight, the presenter will highlight ways in which academics can approach work with small museums, and vice versa in order to develop lasting, positive collaborations.
Presenters: Shelby Gull Laird, NC Museum of Natural Sciences at Whiteville

Green Amendments for the Generations: Recognizing and Protecting Inalienable Environmental Rights
3:05 PM-3:45 PM, Throughout 2
While we have many rights in this nation, environmental rights are not among them. It's time to empower communities to secure their environmental rights: to pull from a system of laws that accommodate pollution, to a system of laws prevents degradation through the passage of constitutional Green Amendments.
Presenters: Maya van Rossum, Green Amendments for the Generations & Delaware Riverkeeper Network

Not Just a Sustainable Future: Education and the Global Wealth Gap
3:05 PM-3:45 PM, Ekhorn B
Presenters: Anthony Klob-Olsunsky, Osm State University; Patricia Glazebrook, Washington State University

Water, Wind, and Fire: How to Rock Community & Citizen Science
4:00 PM-4:40 PM, Berea
Community and citizen science is a meaningful way to engage learners while enhancing the scientific understanding of the local world. Hear about three projects focused on air quality, climate change, and water quality, then learn time and money saving tips for your own community and citizen science or field trip friends.
Presenters: Nina Suzuki, University of California-Davis; Elizabeth Spike, Fairfax County Public Schools

Bright Spots
3:05 PM-3:45 PM
Learn about two or three successful and loosely related programs in each 40-minute session. Sessions are presented in the order listed.
GROUP A
2:15 PM-2:55 PM, Throughout 3
Community and citizen science is a meaningful way to engage learners while enhancing the scientific understanding of the local world. Hear about three projects focused on air quality, climate change, and water quality, then learn time and money saving tips for your own community and citizen science or field trip friends.
Presenters: Nina Suzuki, University of California-Davis; Elizabeth Spike, Fairfax County Public Schools

Reframing Standards to Pursue Environmental Justice: Lessons From Community Environmentalism
2:15 PM-2:55 PM, Throughout 3
Communities predominately of color and low socioeconomic status face disproportionately severe industrialized environmental risk and often lack efficacy to confront it. Community-based education programs increasingly address these concerns, offering models for empowerment. Their work provides important guidance for those seeking to further environmental justice via public school education.
Presenters: Kevin Wickenham, Texas Association for Environmental Education

Reframing Standards to Pursue Environmental Justice: Lessons From Community Environmentalism
2:15 PM-2:55 PM, Throughout 3
Communities predominately of color and low socioeconomic status face disproportionately severe industrialized environmental risk and often lack efficacy to confront it. Community-based education programs increasingly address these concerns, offering models for empowerment. Their work provides important guidance for those seeking to further environmental justice via public school education.
Presenters: Kevin Wickenham, Texas Association for Environmental Education

School Pollinator Garden Project
2:15 PM-2:55 PM, Ekhorn A
This session showcases the results of a year-long project to establish pollinator gardens and provide relevant educational resources for 20 schools in Central Kentucky. We will illustrate the importance of community collaboration to create a powerful partnership that builds capacity to achieve community and societal ways of increased benefits.
Presenters: Jill Embury, Sustainable Communities Network; John Steelman, Grow With Trees Company

Shaping Little Ecological Worldviews: Exploring Ecological Identity in Early Childhood
2:15 PM-2:55 PM, Throughout 5
Ecological worldviews, deep mental patterns, and societal ways of looking at the world, from the natural world, can be influenced through environmental education. Children draw closer to nature through nature play and environmental education. Presenters: Victoria Brussefer, Will Haven Forest Institute; Sarah Haines, Towson University

Using eRESEARCH to Bridge the Research to Practice Gap
3:05 PM-3:45 PM, Ekhorn B
Curious about how you could apply research to improve your work? This session will explore the features and content of eRESEARCH, a joint project of NAAEE and the Children & Nature Network. This session will include a demonstration and scavenger hunt to introduce participants to thousands of easily-digestible summaries on connecting children to nature and environmental education.
Presenters: Charlotte Clark, Duke University; Noelle Wyrzycki, Roth, Duke University

Research and Practice: Living in and Linking Two Worlds
3:05 PM-3:45 PM, Throughout 5
Worlds collided for the presenter when she chose to move from an academic position into a role as director of a small science museum. Using this unique insight, the presenter will highlight ways in which academics can approach work with small museums, and vice versa in order to develop lasting, positive collaborations.
Presenters: Shelby Gull Laird, NC Museum of Natural Sciences at Whiteville

Green Amendments for the Generations: Recognizing and Protecting Inalienable Environmental Rights
3:05 PM-3:45 PM, Throughout 2
While we have many rights in this nation, environmental rights are not among them. It's time to empower communities to secure their environmental rights: to pull from a system of laws that accommodate pollution, to a system of laws prevents degradation through the passage of constitutional Green Amendments.
Presenters: Maya van Rossum, Green Amendments for the Generations & Delaware Riverkeeper Network

Not Just a Sustainable Future: Education and the Global Wealth Gap
3:05 PM-3:45 PM, Ekhorn B
Presenters: Anthony Klob-Olsunsky, Osm State University; Patricia Glazebrook, Washington State University

Earth Day 2020: The Power of the Teach-In
3:05 PM-3:45 PM, Ekhorn A
Teach-ins were an important tool to mobilize citizens for the first Earth Day in 1970. For the 50th anniversary in 2020, we are calling on educators around the world to host teach-ins on locally important environmental issues to get the message out and to help integrate environmental education and civic action.
Presenters: Tracey Ann Ritchie, Earth Day Network; Kira Hoeschen, Earth Day Network

Ecological Literacy and Transformation in a Global Agricultural Learning Network
3:05 PM-3:45 PM, Berea
This session explores how an environmental learning network might contribute to transformative, equity-oriented shifts towards sustainability. Participants will examine a case study of the Savory Global Network, whose purpose is to foster the wide-scale adoption of holistic management, a mode of applied sustainability education and frangeland management.
Presenters: Lee Franklin-Goldwater, University of Colorado-Boulder

Green Amendments for the Generations: Recognizing and Protecting Inalienable Environmental Rights
3:05 PM-3:45 PM, Throughout 2
While we have many rights in this nation, environmental rights are not among them. It's time to empower communities to secure their environmental rights: to pull from a system of laws that accommodate pollution, to a system of laws prevents degradation through the passage of constitutional Green Amendments.
Presenters: Maya van Rossum, Green Amendments for the Generations & Delaware Riverkeeper Network

Not Just a Sustainable Future: Education and the Global Wealth Gap
3:05 PM-3:45 PM, Ekhorn B
Presenters: Anthony Klob-Olsunsky, Osm State University; Patricia Glazebrook, Washington State University

Water, Wind, and Fire: How to Rock Community & Citizen Science
4:00 PM-4:40 PM, Berea
Community and citizen science is a meaningful way to engage learners while enhancing the scientific understanding of the local world. Hear about three projects focused on air quality, climate change, and water quality, then learn time and money saving tips for your own community and citizen science or field trip friends.
Presenters: Nina Suzuki, University of California-Davis; Elizabeth Spike, Fairfax County Public Schools

Bright Spots
3:05 PM-3:45 PM
Learn about two or three successful and loosely related programs in each 40-minute session. Sessions are presented in the order listed.
GROUP A
2:15 PM-2:55 PM, Throughout 3
Community and citizen science is a meaningful way to engage learners while enhancing the scientific understanding of the local world. Hear about three projects focused on air quality, climate change, and water quality, then learn time and money saving tips for your own community and citizen science or field trip friends.
Presenters: Nina Suzuki, University of California-Davis; Elizabeth Spike, Fairfax County Public Schools

Reframing Standards to Pursue Environmental Justice: Lessons From Community Environmentalism
2:15 PM-2:55 PM, Throughout 3
Communities predominately of color and low socioeconomic status face disproportionately severe industrialized environmental risk and often lack efficacy to confront it. Community-based education programs increasingly address these concerns, offering models for empowerment. Their work provides important guidance for those seeking to further environmental justice via public school education.
Presenters: Kevin Wickenham, Texas Association for Environmental Education

School Pollinator Garden Project
2:15 PM-2:55 PM, Ekhorn A
This session showcases the results of a year-long project to establish pollinator gardens and provide relevant educational resources for 20 schools in Central Kentucky. We will illustrate the importance of community collaboration to create a powerful partnership that builds capacity to achieve community and societal ways of increased benefits.
Presenters: Jill Embury, Sustainable Communities Network; John Steelman, Grow With Trees Company

Shaping Little Ecological Worldviews: Exploring Ecological Identity in Early Childhood
2:15 PM-2:55 PM, Throughout 5
Ecological worldviews, deep mental patterns, and societal ways of looking at the world, from the natural world, can be influenced through environmental education. Children draw closer to nature through nature play and environmental education. Presenters: Victoria Brussefer, Will Haven Forest Institute; Sarah Haines, Towson University

Using eRESEARCH to Bridge the Research to Practice Gap
3:05 PM-3:45 PM, Ekhorn B
Curious about how you could apply research to improve your work? This session will explore the features and content of eRESEARCH, a joint project of NAAEE and the Children & Nature Network. This session will include a demonstration and scavenger hunt to introduce participants to thousands of easily-digestible summaries on connecting children to nature and environmental education.
Presenters: Charlotte Clark, Duke University; Noelle Wyrzycki, Roth, Duke University

Research and Practice: Living in and Linking Two Worlds
3:05 PM-3:45 PM, Throughout 5
Worlds collided for the presenter when she chose to move from an academic position into a role as director of a small science museum. Using this unique insight, the presenter will highlight ways in which academics can approach work with small museums, and vice versa in order to develop lasting, positive collaborations.
Presenters: Shelby Gull Laird, NC Museum of Natural Sciences at Whiteville

Green Amendments for the Generations: Recognizing and Protecting Inalienable Environmental Rights
3:05 PM-3:45 PM, Throughout 2
While we have many rights in this nation, environmental rights are not among them. It's time to empower communities to secure their environmental rights: to pull from a system of laws that accommodate pollution, to a system of laws prevents degradation through the passage of constitutional Green Amendments.
Presenters: Maya van Rossum, Green Amendments for the Generations & Delaware Riverkeeper Network

Not Just a Sustainable Future: Education and the Global Wealth Gap
3:05 PM-3:45 PM, Ekhorn B
Presenters: Anthony Klob-Olsunsky, Osm State University; Patricia Glazebrook, Washington State University

Water, Wind, and Fire: How to Rock Community & Citizen Science
4:00 PM-4:40 PM, Berea
Community and citizen science is a meaningful way to engage learners while enhancing the scientific understanding of the local world. Hear about three projects focused on air quality, climate change, and water quality, then learn time and money saving tips for your own community and citizen science or field trip friends.
Presenters: Nina Suzuki, University of California-Davis; Elizabeth Spike, Fairfax County Public Schools

Bright Spots
3:05 PM-3:45 PM
Learn about two or three successful and loosely related programs in each 40-minute session. Sessions are presented in the order listed.
GROUP A
2:15 PM-2:55 PM, Throughout 3
Community and citizen science is a meaningful way to engage learners while enhancing the scientific understanding of the local world. Hear about three projects focused on air quality, climate change, and water quality, then learn time and money saving tips for your own community and citizen science or field trip friends.
Presenters: Nina Suzuki, University of California-Davis; Elizabeth Spike, Fairfax County Public Schools

Reframing Standards to Pursue Environmental Justice: Lessons From Community Environmentalism
2:15 PM-2:55 PM, Throughout 3
Communities predominately of color and low socioeconomic status face disproportionately severe industrialized environmental risk and often lack efficacy to confront it. Community-based education programs increasingly address these concerns, offering models for empowerment. Their work provides important guidance for those seeking to further environmental justice via public school education.
Presenters: Kevin Wickenham, Texas Association for Environmental Education

Reframing Standards to Pursue Environmental Justice: Lessons From Community Environmentalism
2:15 PM-2:55 PM, Throughout 3
Communities predominately of color and low socioeconomic status face disproportionately severe industrialized environmental risk and often lack efficacy to confront it. Community-based education programs increasingly address these concerns, offering models for empowerment. Their work provides important guidance for those seeking to further environmental justice via public school education.
Presenters: Kevin Wickenham, Texas Association for Environmental Education

School Pollinator Garden Project
2:15 PM-2:55 PM, Ekhorn A
This session showcases the results of a year-long project to establish pollinator gardens and provide relevant educational resources for 20 schools in Central Kentucky. We will illustrate the importance of community collaboration to create a powerful partnership that builds capacity to achieve community and societal ways of increased benefits.
Presenters: Jill Embury, Sustainable Communities Network; John Steelman, Grow With Trees Company

Shaping Little Ecological Worldviews: Exploring Ecological Identity in Early Childhood
2:15 PM-2:55 PM, Throughout 5
Ecological worldviews, deep mental patterns, and societal ways of looking at the world, from the natural world, can be influenced through environmental education. Children draw closer to nature through nature play and environmental education. Presenters: Victoria Brussefer, Will Haven Forest Institute; Sarah Haines, Towson University

Using eRESEARCH to Bridge the Research to Practice Gap
3:05 PM-3:45 PM, Ekhorn B
Curious about how you could apply research to improve your work? This session will explore the features and content of eRESEARCH, a joint project of NAAEE and the Children & Nature Network. This session will include a demonstration and scavenger hunt to introduce participants to thousands of easily-digestible summaries on connecting children to nature and environmental education.
Presenters: Charlotte Clark, Duke University; Noelle Wyrzycki, Roth, Duke University

Research and Practice: Living in and Linking Two Worlds
3:05 PM-3:45 PM, Throughout 5
Worlds collided for the presenter when she chose to move from an academic position into a role as director of a small science museum. Using this unique insight, the presenter will highlight ways in which academics can approach work with small museums, and vice versa in order to develop lasting, positive collaborations.
Presenters: Shelby Gull Laird, NC Museum of Natural Sciences at Whiteville

Green Amendments for the Generations: Recognizing and Protecting Inalienable Environmental Rights
3:05 PM-3:45 PM, Throughout 2
While we have many rights in this nation, environmental rights are not among them. It's time to empower communities to secure their environmental rights: to pull from a system of laws that accommodate pollution, to a system of laws prevents degradation through the passage of constitutional Green Amendments.
Presenters: Maya van Rossum, Green Amendments for the Generations & Delaware Riverkeeper Network

Not Just a Sustainable Future: Education and the Global Wealth Gap
3:05 PM-3:45 PM, Ekhorn B
Presenters: Anthony Klob-Olsunsky, Osm State University; Patricia Glazebrook, Washington State University

Earth Day 2020: The Power of the Teach-In
3:05 PM-3:45 PM, Ekhorn A
Teach-ins were an important tool to mobilize citizens for the first Earth Day in 1970. For the 50th anniversary in 2020, we are calling on educators around the world to host teach-ins on locally important environmental issues to get the message out and to help integrate environmental education and civic action.
Presenters: Tracey Ann Ritchie, Earth Day Network; Kira Hoeschen, Earth Day Network

Ecological Literacy and Transformation in a Global Agricultural Learning Network
3:05 PM-3:45 PM, Berea
This session explores how an environmental learning network might contribute to transformative, equity-oriented shifts towards sustainability. Participants will examine a case study of the Savory Global Network, whose purpose is to foster the wide-scale adoption of holistic management, a mode of applied sustainability education and frangeland management.
Presenters: Lee Franklin-Goldwater, University of Colorado-Boulder

Green Amendments for the Generations: Recognizing and Protecting Inalienable Environmental Rights
3:05 PM-3:45 PM, Throughout 2
While we have many rights in this nation, environmental rights are not among them. It's time to empower communities to secure their environmental rights: to pull from a system of laws that accommodate pollution, to a system of laws prevents degradation through the passage of constitutional Green Amendments.
Presenters: Maya van Rossum, Green Amendments for the Generations & Delaware Riverkeeper Network

Not Just a Sustainable Future: Education and the Global Wealth Gap
3:05 PM-3:45 PM, Ekhorn B
Presenters: Anthony Klob-Olsunsky, Osm State University; Patricia Glazebrook, Washington State University

Water, Wind, and Fire: How to Rock Community & Citizen Science
4:00 PM-4:40 PM, Berea
Community and citizen science is a meaningful way to engage learners while enhancing the scientific understanding of the local world. Hear about three projects focused on air quality, climate change, and water quality, then learn time and money saving tips for your own community and citizen science or field trip friends.
Presenters: Nina Suzuki, University of California-Davis; Elizabeth Spike, Fairfax County Public Schools

Bright Spots
3:05 PM-3:45 PM
Learn about two or three successful and loosely related programs in each 40-minute session. Sessions are presented in the order listed.
GROUP A
2:15 PM-2:55 PM, Throughout 3
Community and citizen science is a meaningful way to engage learners while enhancing the scientific understanding of the local world. Hear about three projects focused on air quality, climate change, and water quality, then learn time and money saving tips for your own community and citizen science or field trip friends.
Presenters: Nina Suzuki, University of California-Davis; Elizabeth Spike, Fairfax County Public Schools

Reframing Standards to Pursue Environmental Justice: Lessons From Community Environmentalism
2:15 PM-2:55 PM, Throughout 3
Communities predominately of color and low socioeconomic status face disproportionately severe industrialized environmental risk and often lack efficacy to confront it. Community-based education programs increasingly address these concerns, offering models for empowerment. Their work provides important guidance for those seeking to further environmental justice via public school education.
Presenters: Kevin Wickenham, Texas Association for Environmental Education

School Pollinator Garden Project
2:15 PM-2:55 PM, Ekhorn A
This session showcases the results of a year-long project to establish pollinator gardens and provide relevant educational resources for 20 schools in Central Kentucky. We will illustrate the importance of community collaboration to create a powerful partnership that builds capacity to achieve community and societal ways of increased benefits.
Presenters: Jill Embury, Sustainable Communities Network; John Steelman, Grow With Trees Company

Shaping Little Ecological Worldviews: Exploring Ecological Identity in Early Childhood
2:15 PM-2:55 PM, Throughout 5
Ecological worldviews, deep mental patterns, and societal ways of looking at the world, from the natural world, can be influenced through environmental education. Children draw closer to nature through nature play and environmental education. Presenters: Victoria Brussefer, Will Haven Forest Institute; Sarah Haines, Towson University

Using eRESEARCH to Bridge the Research to Practice Gap
3:05 PM-3:45 PM, Ekhorn B
Curious about how you could apply research to improve your work? This session will explore the features and content of eRESEARCH, a joint project of NAAEE and the Children & Nature Network. This session will include a demonstration and scavenger hunt to introduce participants to thousands of easily-digestible summaries on connecting children to nature and environmental education.
Presenters: Charlotte Clark, Duke University; Noelle Wyrzycki, Roth, Duke University

Research and Practice: Living in and Linking Two Worlds
3:05 PM-3:45 PM, Throughout 5
Worlds collided for the presenter when she chose to move from an academic position into a role as director of a small science museum. Using this unique insight, the presenter will highlight ways in which academics can approach work with small museums, and vice versa in order to develop lasting, positive collaborations.
Presenters: Shelby Gull Laird, NC Museum of Natural Sciences at Whiteville

Live and Learn in the Field

Master of Arts in Environmental Education

This 11-month program integrates ecological learning and pedagogical skills through immersive courses, a teaching practicum with professional mentorship, and exploring The Bahamas in February.

→ goshen.edu/maee

Merry Lea
Environmental Learning Center
of Goshen College

Saturday

Saturday 7:30 AM

Lexington at Leisure

Morning Yoga: From Awareness to Action (3)
7:30 AM-8:15 AM, Paterson E-G
Wake to the new day with awareness of breath, movement, and alignment. Through this gentle practice, reconnect with your body and mind's ability to move intentionally throughout the actions of the day. Instructor Pam Thomas is certified by and registered with the Yoga Alliance.

Saturday 8:30 AM

Symposium

Washington ClimateTime: Climate Science Justice Learning in Action
8:30 AM-10:00 AM, Kentucky
Climate science education has gone statewide! Washington is the first state in the nation to engage in a coordinated and funded effort to foster teacher professional learning around climate science. Come and explore examples of what the work looks like and how it got off the ground.

Presenters: Kathryn Kurtz, Pacific Education Institute; Brad Street, IslandWood
Moderator: Elizabeth Schmitz, Office of the Superintendent of Public Instruction
Strand:

LOCAL WILDLIFE

Tulip Poplar
The tulip poplar was designated the official state tree of Kentucky in 1994. It is the tallest eastern hardwood and produces large, fragrant, tulip-like flowers in the spring.

Key

- Building Leadership for Environmental Literacy
- Connecting with Nature
- Conservation and Environmental Education
- Educating for Sustainable Communities
- Green Schools and Preparing for 21st Century Careers
- Linking Research and Practice to Increase Impact
- Equity and Inclusion
- Young Professionals
- NAAEE Affiliate Network
- ee30

Hands-On Presentations

8:30 AM-10:00 AM
Elephant Reproduction: Hormones, Sex, and Conservation
8:30 AM-10:00 AM, Throughbred 4
Join San Diego Zoo Institute for Conservation Research educators to explore the science of hormones in African elephant conservation. Learn about free professional development opportunities with the largest zoo-based multidisciplinary research effort in the world, and leave with curricula to bring the science of saving species into your classroom!
Presenters: Maggie Reinbold, San Diego Zoo Global
Strand:

Social Justice in Focus: An EFS Community of Practice
8:30 AM-10:00 AM, Heritage Ballroom 1
Join us for an interactive presentation about an Education for Sustainability community of practice focused on social justice. This forum emerged from a shared need to tackle our discomfort in addressing identity, power, and privilege in learning environments. Come engage in dialogue about building safe spaces for courageous conversations!
Presenters: Aimee Aranda-Ostensen, Shelburne Farms; Paul Bucko, Antioch University New England
Strand:

SATURDAY

Sustainable STEAM
8:30 AM-10:00 AM, Heritage Ballroom 2
Join Lee Johnson Elementary and EcoEisE will present best practices for integrating STEAM and sustainability through hands-on, fast-paced, hands-on session. Learn how to leverage your school building, data collection tools, technology, and community support to empower students to tackle real-world sustainability challenges and foster a passion for STEAM.
Presenters: Abby Randell, EcoEisE
Strand:

Teaching the Human Dimensions of Climate Change
8:30 AM-10:00 AM, Heritage Ballroom 3
Discover innovative and hands-on activities to connect climate change with the history of population growth, industrialization, current energy use, and projected risks to vulnerable communities around the globe. Engage in a group simulation modeling comparative resource use and natural habitat loss to sea level rise, extreme weather, and changes in food production.
Presenters: Scott Townsend, Eastern Kentucky University
Strand:

Traditional Presentations

8:30 AM-9:10 AM
Affiliates and Advocacy
8:30 AM-9:10 AM, Hyatt Suites
Ready to implement some advocacy work into your Affiliate program but not sure where to start? Connect with Affiliates and NAAEE staff to learn best practices in Affiliate advocacy and success stories at local and national advocacy efforts.
Presenters: Sarah Bodor, NAAEE; Laura Collard, Maryland Association for Environmental and Outdoor Education; Alex Porpora, Utah Society for Environmental Education
Strand:

Engaging Citizen Scientists to Understand Changes in Lake Water Storage
8:30 AM-10:00 AM, Elkhorn A
The Lake Observations by Citizen Scientists (Lakes Obs) project engages citizen scientists in monitoring how the amount of water in lakes changes over time. We'll discuss strategies for engaging citizen scientists, explore their motivations, and share insights about their ability to provide accurate data.
Presenters: Sarah Yelton, UNC Institute for the Environment
Strand:

Forming Your "Team Justice" with Service, Diversity, and Inclusion
8:30 AM-9:10 AM, Berea
A successful model to address social responsibility can occur by forming a "Team Justice" to better connect schools with regional environmental, equity, and diversity interests. This session guides the participants in building from a solo solo model to a team model to build stronger and longer lasting community partnerships.
Presenters: Brian P. Kane, St. Stephen's and St. Agnes School
Strand:

Nature Hop: Connecting Urban Residents with Local Nature
8:30 AM-9:10 AM, Elkhorn B
Living in a digital urban environment in many ways, but nature is always close at hand—whether a farm, park, water quality lot, or greenway. Inspired by Berkeley's Long Day of Urban Nature, Nature Hop is a one-day event that connects Lexington residents with the nature near them.
Presenters: Chrissa Tume, Lexington-Fayette Urban County Government; Joseph Brenzel, Lexington-Fayette Urban County Government; Angela Poe, City of Lexington KY
Strand:

Scholars Stewards, Volunteers: Environmental Education Means Public School Curriculum
8:30 AM-9:10 AM, Throughbred 3
The Environmental Institute at Ivy Academy has blazed a trail for an impactful intersection of experiential and public education. Learn how this USDE Green Ribbon School carved a path to a team model to build stronger and longer lasting environmental stewardship, and community volunteering to educate individual students and engage the community.
Presenters: Ansley Eichhorn, Ivy Academy Environmental Charter School
Strand:

The Aloka 'ina Digital Bus: Mobile STEM and Hawaiian Knowledge Classrooms
10:30 AM-12:00 PM, Heritage Ballroom 2
The Aloka 'ina Digital Bus integrates STEM with traditional knowledge into projects for public schools on Maui and Molokai. Through the use of our mobile classrooms we bring students into the field to establish the importance of science and culture while connecting them to nature and their environment.
Presenters: Davi Yun, Aloka 'ina Maui Digital Bus; Aimee Aranda-Ostensen, Aloka 'ina Molokai Digital Bus
Strand:

Saturday 9:20 AM

Meeting
9:20 AM-10:00 AM
NAAEE Business Meeting
9:20 AM-10:00 AM, Elkhorn B
Join NAAEE's board chair, executive director, board members, and staff for a discussion on the current state of the organization and future directions for NAAEE. Topics will include strategic planning, a financial report, and your questions. We welcome your input!
Coordinators: Judy Brash, NAAEE; Charlotte Clark, Duke University

Traditional Presentations

9:20 AM-10:00 AM
Building Momentum with Green Ribbon Schools: Case Studies of K-12 Schools
9:20 AM-10:00 AM, Elkhorn A
This session will give a brief overview of the Green Ribbon School award and share case studies of K-12 schools that have successfully completed the process. The presentation summary will focus on how other programs can take this information to build momentum toward creating their own green schools.
Presenters: Linda Pleykay, University of Cincinnati; Randall Gibson, University of Cincinnati
Strand:

Connecting Rural Families to Local Science Issues Through a Water-Quality Workshop
9:20 AM-10:00 AM, Berea
This research project investigates how scientist-led programs for rural families in libraries and museums make local science issues visible and relevant to families. Specifically, this study provides findings related to how scientists (STEM professionals) can be positioned to facilitate families' personally-relevant connections to water quality issues through water-themed science workshops.
Presenters: Lucy McClain, Shaver's Creek Environmental Center-Penn State University
Strand:

Success, Shortcomings, and Future of the Swarovski Waterschool USA Program
9:20 AM-10:00 AM, Throughbred 5
The Swarovski Waterschool Mississippi River program has both success and shortcomings in its initial two-year launch. Come learn about what worked well and the changes we're making as we move into the next three-year phase. Participate in a discussion on best practices for continued engagement in watershed education.
Presenters: Tiffany Atkinson, National Great Rivers Research and Education Center; Corinne O'Brien, National Great Rivers Research and Education Center
Strand:

SATURDAY

Climate Hope: Optimism and Solutions Around Climate Change
10:30 AM-11:10 AM, Throughbred 3
Let's inspire people to take action on climate through a focus on solutions and hope, rather than data and doom. Get a dose of optimism as we talk about the climate solutions happening around the world that provide the sense of empowerment and agency we need to tackle the climate issue.
Presenters: Adam Farmer, The Marine Mammal Center
Strand:

Designing Curriculum to Engage Young People in Environmental Dialogue
10:30 AM-11:10 AM, Throughbred 5
The presenters will outline a curricular method for including underrepresented voices in environmental dialogue and provide an example of its use, by sharing photographs and student quotes, this presentation will build upon use of photovoice in various settings.
Presenters: Carolynn Waters, Bellarmine University
Strand:

EE Associations: Making the Most of Membership
10:30 AM-11:10 AM, Hyatt Suites
Learn about two or three successful and loosely related programs in each 40-minute session. Sessions are presented in the order listed.
Presenters: Carolynn Waters, Bellarmine University
Strand:

EE2: Opportunities for Evidence-Based, Networked Learning in EE
10:30 AM-11:10 AM, Elkhorn A
Your organization seeks to learn and improve. We propose an innovative way to accomplish this goal. We discuss the development of a learning network based on shared evaluation tools through which organizations can evaluate their own programs and learn from each other to enhance their performance.
Presenters: Robert Powell, Clemson University; Marc Stern, Virginia Tech; Troy Frenley, University of North Carolina at Wilmington
Strand:

SATURDAY

Impact: Creating a Generation of Change
9:20 AM-10:00 AM, Throughbred 2
Join the San Antonio Water System in an exploration of their highly successful high school program called Impact. Learn how this 20-year project-based program has helped to evolve a culture of water conservation in the city and continues to contribute to a sustainable future for San Antonio.
Presenters: Lynne Christopher, San Antonio Water System
Strand:

Introduction to Crowdfunding: Using Your Team to Fundraise
9:20 AM-10:00 AM, Hyatt Suites
Thinking about launching a new crowdfunding campaign or looking to amp up your previous campaign strategies? Come learn from ENCI! We raised almost \$37K in six weeks last year through peer-to-peer campaigns. We'll share our lessons learned, and tips and tricks to help you raise funds for critical programs.
Presenters: Lauren Pyle, Environmental Educators of North Carolina
Strand:

Life in the Licking River: 4H Water Quality Study
9:20 AM-10:00 AM, Throughbred 3
Not your typical water quality study. 4H partners with our local middle school and 3M Company to provide an experience that makes the connection between nature, science, communications, and purpose. This program addresses the quality of our local water source and encourages students to communicate results and action plans to community leaders!
Presenters: Mike Hoyer, University of Kentucky Cooperative Extension; Eric Comley, University of Kentucky
Strand:

Success, Shortcomings, and Future of the Swarovski Waterschool USA Program
9:20 AM-10:00 AM, Throughbred 5
The Swarovski Waterschool Mississippi River program has both success and shortcomings in its initial two-year launch. Come learn about what worked well and the changes we're making as we move into the next three-year phase. Participate in a discussion on best practices for continued engagement in watershed education.
Presenters: Tiffany Atkinson, National Great Rivers Research and Education Center; Corinne O'Brien, National Great Rivers Research and Education Center
Strand:

SATURDAY

Bright Spots
9:20 AM-10:00 PM
Learn about two or three successful and loosely related programs in each 40-minute session. Sessions are presented in the order listed.

GROUP A
9:20 AM-10:00 AM, Elkhorn C
Let Youth Lead: Lessons from a By-Youth, For-Youth Grant Program
So many of us care about cultivating youth leadership, but it can be difficult to know where to begin. This presentation provides specific tips on letting youth lead based on ten years of success with the Carmel Green Teen Micro-Grant Program, a youth-run program that supports youth-led environmental projects.
Presenters: Lauren Gibson, NOAA Office of Education
Strand:

Pathway to Solutions: Engaging Youth in Climate Action in Brazil
Learn about the successful "Pathway to Solutions" methodology, which was developed by Engagemundo, a Brazilian youth-led NGO that uses advocacy, activism, and capacity building to implement the Sustainable Development Goals. See how this approach engages young people to drive social and environmental change in their communities by building leadership in schools.
Presenters: Eduarda Zogbi, Columbia University
Strand:

Transformational Change: Redefining Our Movement for Sustainability
Young people today are acting on a wide range of environmental issues and connecting the dots to build a sustainable future. Reflecting on the Scouts for Sustainability Program in Canada, this session will show a movement led by youth for youth, highlighting the importance of partnerships, networks, and shared advocacy.
Presenters: Adam Young, Canadian Network for Environmental Education & Communication-ECCOM
Strand:

SATURDAY

GROUP B
9:20 AM-10:00 AM, Elkhorn D
Exploring Literacy in School Gardens
Do you have a school or community garden that you want to use to get students interested in writing and reading about the natural world? Learn about tools and techniques for how to use nature journaling to engage students in describing what they notice in the world around them.
Presenters: Julia Colbert, Arizona State University; Eileen Merritt, Arizona State University
Strand:

Field to Fork Club: Cook, Eat, Grow!
The Food Literacy Project's Field to Fork Club empowers some of the youngest members of our city to transform themselves, their families, and their communities by connecting them to a lifestyle full of healthy and delicious food, endless garden fun, and the skills to back up both!
Presenters: Daniela Bartlett Aserjo, The Food Literacy Project
Strand:

School Gardens for Food Equity
More than 1.4 million people in Los Angeles live with food insecurity. MUSE School sixth graders tackle this environmental justice issue by growing produce for a local food pantry in their school garden. Participants will leave this talk with a framework for implementing similar programs in their own communities.
Presenters: Rick Perillo, MUSE School
Strand:

Coffee Break
10:00 AM-10:30 AM, Bluegrass Lobby

Saturday 10:30 AM

Symposium

10:30 AM-12:00 PM
School of the Wild: Connecting All Students to the Wild
10:30 AM-12:00 PM, Kentucky
For 20 years, School of the Wild has provided weeklong wildlife experiences for students in the Iowa City Community School District. Join our panel to hear how we went from an exploratory pilot to a district-wide program serving all students. Let our team's experience help you grow your programs.
Presenters: David Condon, University of Iowa Recreational Services; Ted Neal, University of Iowa; Rebekah Stedde, University of Iowa
Moderator: Jay Gross, University of Iowa
Strand:

Hands-On Presentations
10:30 AM-12:00 PM

A River of Words in My Backyard Stream
10:30 AM-12:00 PM, Heritage Ballroom 1
Many of Kentucky's 90,000+ miles of streams are considered backcountry streams, but many are "urban stream syndrome." We will use hands-on explorations and creative discussions to learn key concepts related to stream systems and successful backcountry stream management. Participants will leave the workshop with resources to share with high school, college, and adult audiences.
Presenters: Carmen Aguirre, University of Kentucky; Amanda Gumberg, University of Kentucky Cooperative Extension Service
Strand:

Mountains to Main Street: Engaging Community Influencers as Ambassadors
10:30 AM-12:00 PM, Heritage Ballroom 3
Mountains to Main Street Ambassador Program is a unique partnership between Grand Teton National Park and Groundwork USA. A weeklong workshop trains emerging professionals to channel enthusiasm into an energy engagement strategy. You'll hear about the program and then work with the planning team to think about your own work.
Presenters: Megan Kohn, Grand Teton National Park; Tanner Yes, Groundwork USA
Strand:

SATURDAY

Mobilizing the World's Largest Untapped Natural Resource: Our Students
11:20 AM-12:00 PM, Berea
Our children spend 14,000 hours sitting in school. Imagine if every campus acted as an incubator for social change and teachers dedicated their classrooms to solving real-world problems. EcoEisE shares resources and strategies to mobilize and fund youth-driven solutions for a sustainable world.
Presenters: Abby Kanel, EcoEisE
Strand:

Saving Grasslands with Citizen Science and Civic Ecology
11:20 AM-12:00 PM, Throughbred 3
The Southeastern Grasslands Initiative engages local community members in the identification and restoration of native grasslands, from wide prairies to narrow roadides. Employing Naturalist makes participation available to diverse audiences in locations across the southern United States. Discover how to include your classroom or community group.
Presenters: Michelle Rogers, Austin Peay State University; Dina Short, Austin Peay State University; Philip Short, Austin Peay State University; Chelsea Blumberg, Austin Peay State University
Strand:

Secondary Teachers' Implementation of a Model-Based Climate Curriculum Unit
11:20 AM-12:00 PM, Throughbred 5
We share results of qualitative analysis of two secondary science teachers' implementation of a new, NSF-funded, global climate model-based curriculum in ninth grade geoscience classrooms. Our findings show that these two implementation choices differed among the following themes: (1) student autonomy, (2) lesson adaptation, and (3) maintaining congruence among classes.
Presenters: Kimberly Carroll Steward, University of North Carolina
Strand:

SATURDAY

EE Associations: Making the Most of Membership
10:30 AM-11:10 AM, Hyatt Suites
Learn about two or three successful and loosely related programs in each 40-minute session. Sessions are presented in the order listed.
Presenters: Carolynn Waters, Bellarmine University
Strand:

EE2: Opportunities for Evidence-Based, Networked Learning in EE
10:30 AM-11:10 AM, Elkhorn A
Your organization seeks to learn and improve. We propose an innovative way to accomplish this goal. We discuss the development of a learning network based on shared evaluation tools through which organizations can evaluate their own programs and learn from each other to enhance their performance.
Presenters: Robert Powell, Clemson University; Marc Stern, Virginia Tech; Troy Frenley, University of North Carolina at Wilmington
Strand:

Bridging the Gap: Different Perspectives on Equity and Inclusion
10:30 AM-11:10 AM, Throughbred 2
Equity and inclusion is a "hot topic" in environmental education, yet there is little common understanding of what it looks like in practice. This presentation will showcase the perspectives of organizational leaders and educators of color, identify patterns, and share insights on how to bridge the gap.
Presenters: Jedda Foreman, Lawrence Hall of Science; Emilee Lygdon, BEETLES Project, Lawrence Hall of Science; Rena Fideleja Pagan, Youth Outside
Strand:

Traditional Presentations
10:30 AM-11:10 AM

SATURDAY

Talking About EE: Crafting Messaging with Affiliates
11:20 AM-12:00 PM, Hyatt Suites
How do we promote EE in conversations about environmental literacy with those who don't already see the value and benefits of EE? Explore strategies for environmental education, yet there is little common understanding of what it looks like in practice. This presentation will showcase the perspectives of organizational leaders and educators of color, identify patterns, and share insights on how to bridge the gap.
Presenters: Jedda Foreman, Lawrence Hall of Science; Emilee Lygdon, BEETLES Project, Lawrence Hall of Science; Rena Fideleja Pagan, Youth Outside
Strand:

Collaborative Education Program Design for Environmental Civic Action
How do we promote EE in conversations about environmental literacy with those who don't already see the value and benefits of EE? Explore strategies for environmental education, yet there is little common understanding of what it looks like in practice. This presentation will showcase the perspectives of organizational leaders and educators of color, identify patterns, and share insights on how to bridge the gap.
Presenters: Jedda Foreman, Lawrence Hall of Science; Emilee Lygdon, BEETLES Project, Lawrence Hall of Science; Rena Fideleja Pagan, Youth Outside
Strand:

Environmental Education in the Bahamas Primary Curriculum: Bridging Community and Conservation
My research within the Bahamas focuses on the effects of implementing environmental education at the primary school level in an empowering and culturally relevant manner. The data demonstrates the student's ability to disseminate environmental knowledge across the island, a Caribbean example of children becoming environmental ambassadors bridging community and conservation.
Presenters: Olivia Walton, University of New Haven
Strand:

Strategies for Educating Being Watershed Wise with Impact
An educator from the internationally recognized San Antonio River Authority will share fun and effective strategies for moving children and citizens from diverse backgrounds into taking action for healthy creeks and rivers. Learn mindfulness techniques and other tools for maximum impact watershed education.
Presenters: Minna Paul, SARAH
Strand: ●

Saturday 12:00 PM

NAEE Awards Luncheon & Closing Panel
12:00 PM-2:30 PM, Bluegrass Ballroom 2

The conference culminates with our annual awards luncheon; join us in congratulating the 2019 NAEE award recipients, individuals and organizations demonstrating exemplary leadership in our field. Included is the presentation of the Wetzel Ecology Award, considered the organization's highest honor.

EE 30 Under 30: Young Leaders Making a Difference

Veronica Lin, Rumbidzal Magwiro, AleRick Pacay, Sean Russell
Co-Moderated by Tajji Nelson and Danni Washington

Following the ceremony, we'll host the conference on a high note as four inspiring EE 30 Under 30 honorees share their stories and perspectives on how to develop leadership in the field of environmental education.

See pages 43-44 for more information.

Reduce Your Impact

NAEE is working with Schneider Electric to reduce the environmental impact of our conference. You can purchase verified emission reductions (VERs) at the registration desk to help balance the carbon dioxide emissions associated with your travel to the conference and use of resources during your stay in Lexington. Schneider Electric supports a variety of domestic and international carbon projects that conform to leading standards.

This program is printed on 50% recycled paper.

Photos used in the program not specifically credited are courtesy of Shutterstock.com, Wikimedia Commons, FreePress.com, Pixabay.com, Unsplash.com, Pexels.com, and Pexels.com.

48th ANNUAL NAEE CONFERENCE | LEXINGTON, KY 127

Saul Good Restaurant and Pub

"From scratch" salads, warm sandwiches, gourmet burger, hand tossed pizzas, and a signature chocolate bar.
123 North Broadway, Lexington
(859) 254-4663
saulgoodpub.com

Smithtown Seafood

A farm-to-table restaurant favoring Kentucky favorites located in the Bread Box on West Sixth Street. Everything on the menu made from scratch, with, wherever possible, locally raised ingredients.
501 West Sixth Street, Lexington
(859) 303-4100
smithtownseafood.com

Stella's Kentucky Deli

Serves high quality foods that emphasize the superior flavors and textures of fresh, local ingredients—sandwiches, salads, soups, and desserts all made in-house.
143 Jefferson Street, Lexington
(859) 255-3354
stellaskentuckydeli.com

Sunrise Bakery

From three generations of bakers, delicious buttery croissants and freshly baked pastries.
111 West Main Street, Lexington
(859) 255-3904
vatos.com

Third Street Staff & Coffee

Serving locally roasted and fair trade certified organic coffee and espresso with sandwiches.
257 North Limestone, Lexington
(859) 255-3301
thirdstreetstaff.com

Vinagrette Salad Kitchen

Serves fresh, healthy salads, prepared in front of you, and house-made soups. A light but satisfying meal with tons of flavor.
113 North Broadway Lexington
(859) 569-0400
vinagrettesaladkitchen.com

West Sixth Brewing

Located in a 100-year-old building called the Bread Box, they brew, can, and bottle their beer out of this location.
501 West Sixth Street, Lexington
(859) 705-0915
westsixth.com

48th ANNUAL NAEE CONFERENCE | LEXINGTON, KY 130

NAEE Staff, Board, & Advisory Council

Board of Directors
Charlotte Clark, Chair
Jeff Tarbert, Vice Chair
Jaime González, Secretary
Mary Ford, Treasurer

Staff
Judith Braus, Executive Director
Sarah Bodor, Director of Policy & Affiliate Relations
Drew Burnett, Senior Environmental Education Advisor
Briggs Burton, Senior Administrative Assistant
Regina Fong, Office and Events Coordinator
Nina Hamilton, International Programs Specialist
Arturo Herrera, Communications and IT Coordinator
Maxwell Kennedy, Technology and Analytics Associate
Kristen Kunkle, Environmental Education Consultant
Lori Mann, Senior Program and Conference Manager
Christy Merrick, Director, Natural Start Alliance
Lauree Monserrat, Education Consultant
Mary Owjima, Director of Technology and Communications
Betsy Olivko, Assistant Director, Natural Start Alliance
Cathy Parkinson, Communications and Social Media Specialist
Drew Price, Director of Operations
Melissa Hopkins Taggart, Director of International Programs
Anne Umla, Project Manager
Emily Van Lan, Communications and Conference Coordinator
Bruce Young, Affiliate Network Coordinator

Advisory Council
Michael Marzollo, Co-Chair
Bora Simmons, Co-Chair
Elena Takaki, Co-Chair
Janet Ady
Wicko Ardoin
Dave Chase
Paul Hart
Ashley Hoffman
J. Drew Lanham
Heidi McAllister
Kathy McGuffin
Augusto Medina
Brenda Metcalf
Katie Navin
Angela Mooney D'Arcy
Darryl Ramos-Young
T'Noya Thompson
Danni Washington

Consultants
Alicia Dimailo, Conference Planning
Bob Erter, Human Resources
Bill Kinnegan, Web Developer and Videographer
Kathy McGuffin, Conference Coordinator
Joe Shull, Venable LLP, Legal Counsel
Rob Stewart, Technology
Brian Sweeney, Accounting
Katrina Sweeney, Accounting
Steve Weir, weiredesign.com
Sylvia Weir, weiredesign.com

Interns
Jonathan Arentsen
Sabrina Hunte
Elena Otero

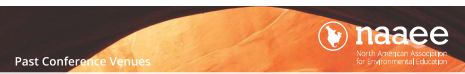
48th ANNUAL NAEE CONFERENCE | LEXINGTON, KY 132



PROJECT LEARNING TREE
HAS REACHED **138 MILLION** STUDENTS THROUGH **765,000 EDUCATORS** SINCE ITS FOUNDING

Together with the Sustainable Forestry Initiative, we are furthering our commitment to getting kids outdoors, connecting youth to forests, and building sustainable communities.

- Come to all of our sessions and hear from our CEO on Oct 18 *Educating for a Just and Sustainable Future*
- Visit our booth in the exhibit hall.
- Learn more: pilotg.org & slf.org



Past Conference Venues

1972 Hot Springs, Arkansas	1988 Orlando, Florida	2005 Albuquerque, New Mexico
1973 St. Louis, Missouri	1989 Estes Park, Colorado	2006 St. Paul, Minnesota
1974 San Francisco, California	1990 San Antonio, Texas	2007 Virginia Beach, Virginia
1975 New Orleans, Louisiana	1991 St. Paul, Minnesota	2008 Wichita, Kansas
1976 Atlanta, Georgia	1992 Toronto, Ontario	2009 Portland, Oregon
1977 Estes Park, Colorado	1993 Big Sky, Montana	2010 Buffalo-Niagara, New York
1978 Chicago, Illinois	1994 Cancun, Quintana Roo	2011 Raleigh-Durham, North Carolina
1979 Blackburg, Virginia	1995 Portland, Maine	2012 Oakland, California
1980 Albuquerque, New Mexico	1996 Burlingame, California	2013 Baltimore, Maryland
1981 Kentucky Dam Village State Park, Kentucky	1997 Vancouver, British Columbia	2014 Ottawa, Ontario
1982 Silver Bay, New York	1998 Atlanta, Georgia	2015 San Diego, California
1983 Ypsilanti, Michigan	1999 Cincinnati, Ohio	2016 Madison, Wisconsin
1984 Lake Louise, Alberta	2000 South Padre Island, Texas	2017 San Juan, Puerto Rico (Virtual)
1985 Chevy Chase, Maryland	2001 Little Rock, Arkansas	2018 Anchorage, Alaska
1986 Eugene, Oregon	2002 Boston, Massachusetts	2019 Lexington, Kentucky
1987 Quebec City, Quebec	2003 Anchorage, Alaska	
	2004 Biloxi, Mississippi	

48th ANNUAL NAEE CONFERENCE | LEXINGTON, KY 138

Aviation Museum of Kentucky

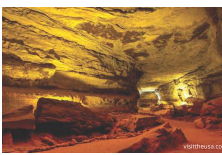
Located at the Bluegrass Airport, the Aviation Museum of Kentucky in Lexington is designed to educate about the aviation industry and inspire those interested in pursuing a career in aviation. Various aircraft and traveling exhibits are on display throughout the year. The museum houses the Kentucky Aviation Hall of Fame, recognizing the accomplishments of Kentuckians.
4029 Airport Road, Lexington
(859) 231-1219
aviation.org

The Isaac Murphy Memorial Art Garden

The Isaac Murphy Memorial Art Garden is the first park in the United States to honor the earliest African American professional jockey—the Thoroughbred jockey. Fittingly, the garden is located on land once owned by Isaac Murphy, the first three-time Kentucky Derby champion, in the predominately African American East End of Lexington.
E 3rd Street at Midland Avenue, Lexington
bgdf.org/engagelcommunity/ MurphyMemorialArtGarden

Keeneland Race Course

With its tranquil setting and lovely stone fences and buildings, this national historic landmark is one of the most genteel and beautiful racetracks in the world. Founded in 1936, Keeneland's mission is to continually invest in the industry and to preserve the tradition of Thoroughbred racing. Visitors are welcome year-round. Live Thoroughbred racing takes place October 4-26.
4201 Versailles Road, Lexington
(859) 254-2412
keeneland.com



48th ANNUAL NAEE CONFERENCE | LEXINGTON, KY 131

The Kentucky Bourbon Trail

The Kentucky Bourbon Trail highlights the 16 signature distilleries at the heart of Kentucky's world-famous bourbon culture. Visit distilleries, historic sites, and other Bluegrass places with a bourbon connection and meet modern-day Kentuckians and Kentucky fans who continue the state's most spirited tradition. The Bourbon Trail's stop in Lexington is Town Branch Distillery and Lexington Brewing Co., home of the Kentucky Ale family of craft brews and the only location on the Bourbon Trail where you can sample both beer and bourbon. Experience a behind-the-scenes look at beer and spirits production and sample products. Lexington Brewing & Distilling Company
401 Cross Street, Lexington
(859) 255-2337
Lexingtonbrewingco.com
visitlex.com/idea-guide/bourbon-distilleries/

Kentucky Horse Park

A working horse farm and educational theme park, the Kentucky Horse Park opened in 1978. Tickets include admission to the world-renowned International Museum of the Horse, an affiliate of the Smithsonian Institution, the American Saddlebred Museum—the Showplace for Saddlebreds, and beautiful grounds year-round.
4089 Iron Works Pike, Lexington
(859) 259-4200
kyhorsepark.com

Lucia's World Emporium

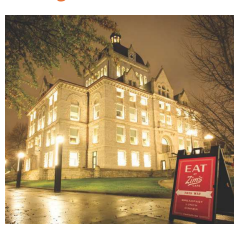
Lucia's World Emporium offers an eclectic array of unique fair trade jewelry, accessories, gifts, home decor, and artwork handcrafted by artisans from around the world.
328 N. Ashland Avenue, Lexington
(859) 523-5229
luciasworldemporium.com

Mammoth Cave

Mammoth Cave National Park, the world's longest known cave system, is a UNESCO World Heritage site and the core area of an international biosphere reserve. The surface encompasses about 80 square miles; no one knows how big the underside is. More than 365 miles of the five-level cave system have been mapped, and new caves are continually being discovered. Mammoth Cave is located approximately two hours from Lexington.
Mammoth Cave, KY
(270) 758-2180
nps.gov/macapa/planyourvisit/index.htm

48th ANNUAL NAEE CONFERENCE | LEXINGTON, KY 133

Getting Around Town



Creaux

A New Orleans inspired cocktail bar and bistro, you can always count on a good time. With live music every Thursday, Friday, and Saturday, the party never stops.
310 West Short Street Lexington
(859) 468-8960
creauxlex.com



Doodles Breakfast and Lunch

Locally owned, locally sourced breakfast and lunch, "comfort food with a conscience."
262 North Limestone, Lexington
(859) 317-8507
goodfods.com

Good Food Co-op

Health-conscious co-op with local produce, meats & bakery items, plus prepared eats & a juice bar. Founded in 1972, owned by 8,500 members, sources items from 250+ Kentucky producers.
455D Southland Drive, Lexington
(859) 278-1813
goodfods.com

HopCat Lexington

Burgers, comfort food and entrees, lunch specials, and plenty of craft beer and whiskey. Locally famous fried 410 West Short Street, Lexington
(859) 286-6847
hopcat.com

Lexington Farmers' Market

On Saturdays at Cheapside Park. Shop for fruits and vegetables, herbs, flowers, jams and jellies, honey, Kentucky specialties, and more.
249 West Main Street, Lexington
(859) 608-2655
lexingtonfarmersmarket.com/

Pies & Pints

Casual pizza and beer, specialty pies.
401 West Main Street, Suite 106, Lexington
(859) 231-7437
piesandpints.net

Alalfa

Fresh, locally sourced, and veg-friendly for nearly 40 years. Alalfa cares about their ingredients and its owners, claiming "local before local was cool."
141 East Main Street, Lexington
(859) 253-0414
alalfarestaurant.com

Corto Lima

Latin-inspired cuisine focusing on affordability, quality ingredients, and a creative menu. Specialty cocktail menu claims Lexington's best margaritas and Latin classics.
101 West Short Street, Lexington
(859) 317-8786
cortolima.com



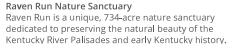
Mary Todd Lincoln House

The Mary Todd Lincoln House was the family home of the wife of 16th president, Abraham Lincoln. Mrs. Lincoln was sophisticated, educated, and versed in politics. On the surface, her success in the White House seemed assured, yet few women in American history have endured as much controversy and tragedy. Tour her childhood home to explore the full story.
578 W Main Street, Lexington
(859) 233-9999
mthhouse.org



Shaker Village of Pleasant Hill

With 34 original 19th century Shaker structures, Shaker Hill of Pleasant Hill is the largest National Historic Landmark in Kentucky. Surrounded by 3,000 acres of conserved farmland, native prairies, forest, and wetlands, the site demonstrates a commitment to community, sustainability, and ingenuity in the spirit of the Kentucky Shakers. Less than 40 minutes from Lexington, Shaker Village is an historic center, farm, preserve, river, and stable.
3501 Lexington Road, Harrodsburg
(859) 736-5411
shakervillage.org



Raven Run Nature Sanctuary

Raven Run is a unique, 734-acre nature sanctuary dedicated to preserving the natural beauty of the Kentucky River Palisades and early Kentucky history. The sanctuary is a City of Lexington park and is free of charge. More than 10 miles of hiking trails provide access to streams, meadows, and woodlands characteristic of the area as well as numerous 19th century remnants of early settlers. Raven Run is home to 600 species of plants and 200 species of birds throughout the year.
3885 Raven Run Way, Lexington
(859) 272-6105
ravenrun.org

48th ANNUAL NAEE CONFERENCE | LEXINGTON, KY 132

NAEE Affiliate Network
From Alberta, Canada to Coyoacán, Mexico

- Environmental Education Association of Alabama
- Alberta Council for Environmental Education
- Alaska Natural Resources and Outdoor Education Association
- Arizona Association for Environmental Education
- Arkansas Environmental Education Association
- California Association for Environmental and Outdoor Education
- Canadian Network for Environmental Education and Communication (ECCO) Le réseau canadien pour l'éducation et de communication relatives à l'environnement
- Colorado Alliance for Environmental Education
- Connecticut Outdoor and Environmental Education Association
- Delaware Association for Environmental Education
- District of Columbia Environmental Education Consortium
- League of Environmental Educators in Florida
- Environmental Education Alliance of Georgia
- Hawaii Environmental Education Alliance
- Idaho Environmental Education Association
- Environmental Education Association of Illinois
- Environmental Education Association of Indiana
- Iowa Conservation Education Coalition
- Kansas Association for Conservation and Environmental Education
- Kentucky Association for Environmental Education
- Louisiana Environmental Education Association
- Maine Environmental Education Association
- Maryland Association for Environmental & Outdoor Education
- Massachusetts Environmental Education Society
- Mexico Centro de Información y Comunicación Ambiental de Norte América
- Michigan Alliance for Environmental and Outdoor Education
- Minnesota Association for Environmental Education
- Mississippi Environmental Education Alliance
- Alaska Natural Resources and Outdoor Education Association
- Montana Environmental Education Association
- Nebraska Alliance for Conservation and Environmental Education
- New England Environmental Educators Alliance
- Alliance for New Jersey Environmental Education and Communication Association of New Mexico
- New York State Outdoor Education Association
- Oklahoma Association for Environmental Education
- North Dakota Coalition for Conservation and Environmental Education
- Environmental Education Council of Ohio
- Oklahoma Association for Environmental Education
- Environmental Education Association of Oregon
- Pennsylvania Association of Environmental Educators
- Rhode Island Environmental Education Association
- Saskatchewan Outdoor and Environmental Education Association
- Environmental Education Association of South Carolina
- Environmental Education Connections of South Dakota
- Southeastern Environmental Education Alliance
- Tennessee Environmental Education Association
- Wisconsin Association for Environmental Education
- Utah Society for Environmental Education
- Vermont Statewide Environmental Education Programs
- Virginia Association for Environmental Education
- E3 Washington
- West Virginia Environmental Education Association
- Wisconsin Association for Environmental Education
- Wyoming Association for Environmental Education

48th ANNUAL NAEE CONFERENCE | LEXINGTON, KY 134

NAEE
North American Association for Environmental Education

Exhibitors

Exhibit Fair Hours
Wednesday, 5:00 PM-6:30 PM | Thursday, 9:00 AM-5:00 PM | Friday, 9:00 AM-2:30 PM
Bluegrass Ballroom 1

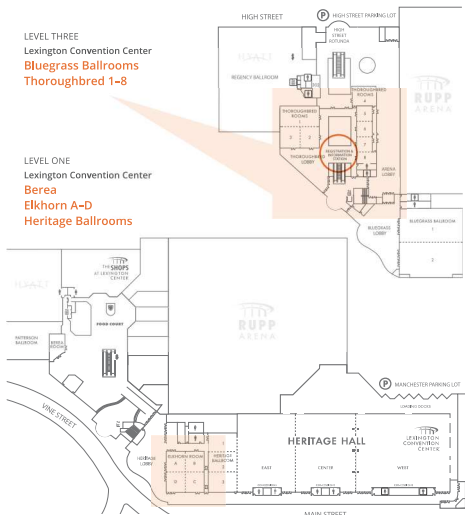
Antioch University New England	26
Association of Fish & Wildlife Agencies/ Project WILD	7
Arizona State University	27
Bluegrass Green Source	34
Centers for Disease Control and Prevention	29
Cornell University	9
Costa Rica Rainforest Experience	32
NCA's Kentucky PFIDE EcoChallenges.org	8
EPA Taiwan	5
Florida Atlantic University	17
Georgia Institute of Technology	6
Kentucky Association for Environmental Education	14
Nature Conservancy and Technical College System	19
Laser Classroom	21
Louisville Nature Center	16
Murray State University National Geographic Society	11
NCF-Earthtron	28
NCA's	4
Nutrients for Life Foundation	2
Ohio River Foundation	12
The Ohio State University	13
Prescott College	35
Slippery Rock University	24
Ten Thousand Villages of Greater Cincinnati	36
Tracy Farmer Institute for Sustainability and the Environment	37
US Environmental Protection Agency	18
US Forest Service	37
University of Wisconsin-Stevens Point	33
Venier Software & Technology	23
We Care Solar	30
Wildlife Acoustics	30

Wild Fig Books and Coffee
This cooperatively owned, radical bookstore, coffee shop, and community event space has a variety of offerings, from co-working space to food specials, open mic nights, poetry readings, Drag Queen Storytimes, small concerts, and, of course, books!
726 N. Limestone, Lexington
(859) 739-2007
wildfigbooksandcoffee.com

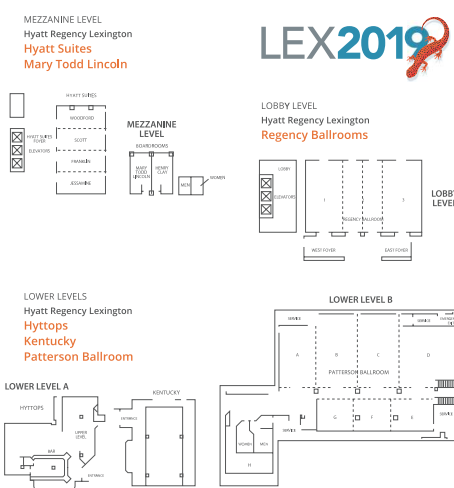
Be sure to visit the NAEE Pavilion in the Bluegrass Lobby.

48th ANNUAL NAEE CONFERENCE | LEXINGTON, KY 135

Venue Maps



48th ANNUAL NAAEE CONFERENCE | LEXINGTON, KY 136



48th ANNUAL NAAEE CONFERENCE | LEXINGTON, KY 137



naaee
49th Annual Conference
October 14-17, 2020
17th Annual Research Symposium
October 13-14, 2020
TUCSON, ARIZONA

naaee | In partnership with:
NORTH AMERICAN ASSOCIATION FOR ENVIRONMENTAL EDUCATION | ARIZONA ASSOCIATION FOR ENVIRONMENTAL EDUCATION
TUCSON2020
naaee.org

From bluegrass fields to saguaro forests
"Tucson had opened my eyes to the world and given me ... a taste for the sensory extravaganza of red hot chiles and five-alarm sunsets."
—BARBARA KINGSOLVER

48th ANNUAL NAAEE CONFERENCE | LEXINGTON, KY 138



Introducing
Tree Campus K-12

Connect your students to nature through trees and earn recognition for your school

Beginning with the 2019/2020 school year, all K-12 schools can earn recognition by meeting four goals:

- Establish a Tree Campus Team
- Create an Education Plan
- Lead a Hands-On Experience
- Hold an Arbor Day Observance

Tree Campus K-12 provides access to resources and a simple framework for using campus and community trees as a learning tool. If your school already has a "green team," celebrates Arbor Day, or covers tree-centric curriculum at any level, you are already on the path to earning recognition.

"Prior to participating in Tree Campus K-12, students were unaware of the value urban trees provide to the overall environment. Instructionally, it was a fantastic opportunity to incorporate STEM skills for an authentic scientific purpose."

— *Science Teacher,*
Palo Verde Magnet High School, AZ

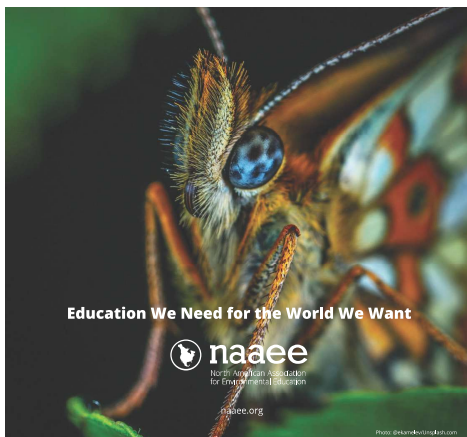
"Students have helped to create plans that revolve around the goals of Tree Campus K-12, and it's because they understand caring for trees and planting a tree can better our environment."

— *Agriculture Teacher,*
Freeport High School, IL

Check out free resources at treecampusk12.org and begin your journey today to earn recognition this year.



48th ANNUAL NAAEE CONFERENCE | LEXINGTON, KY 139



Education We Need for the World We Want

naaee
North American Association
for Environmental Education
naaee.org

Photo: @andersondavis.com

LEX2019

- Follow @TheNAAEE on social media!
- Follow @TheNAAEE on Instagram for NAAEE2019 photos and videos!
- Follow us on Facebook to stay connected to #NAAEE2019 trends and events!
- Access our conference mobile app via your app store: Download "CrowdCompass AttendeeHub" and search for "NAAEE".