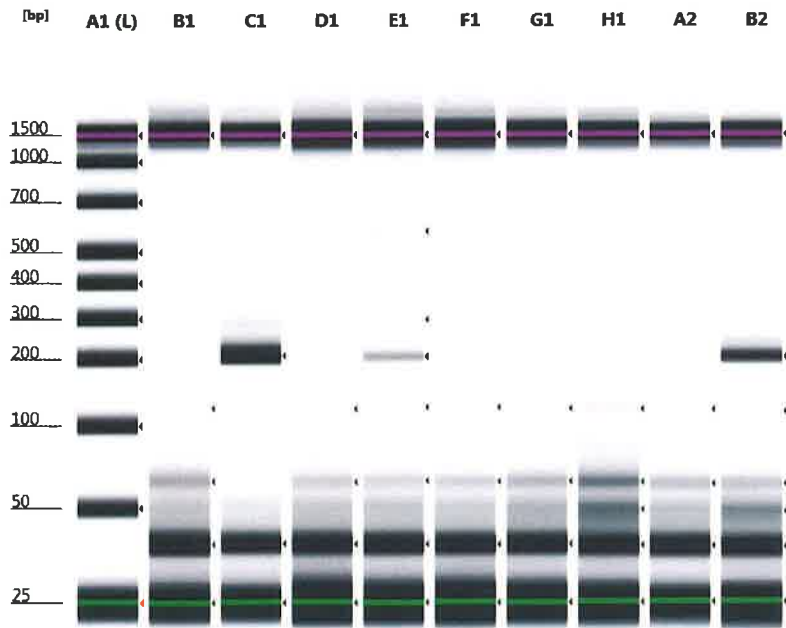


Filename: 2019-10-23 - 13.17.45.D1000

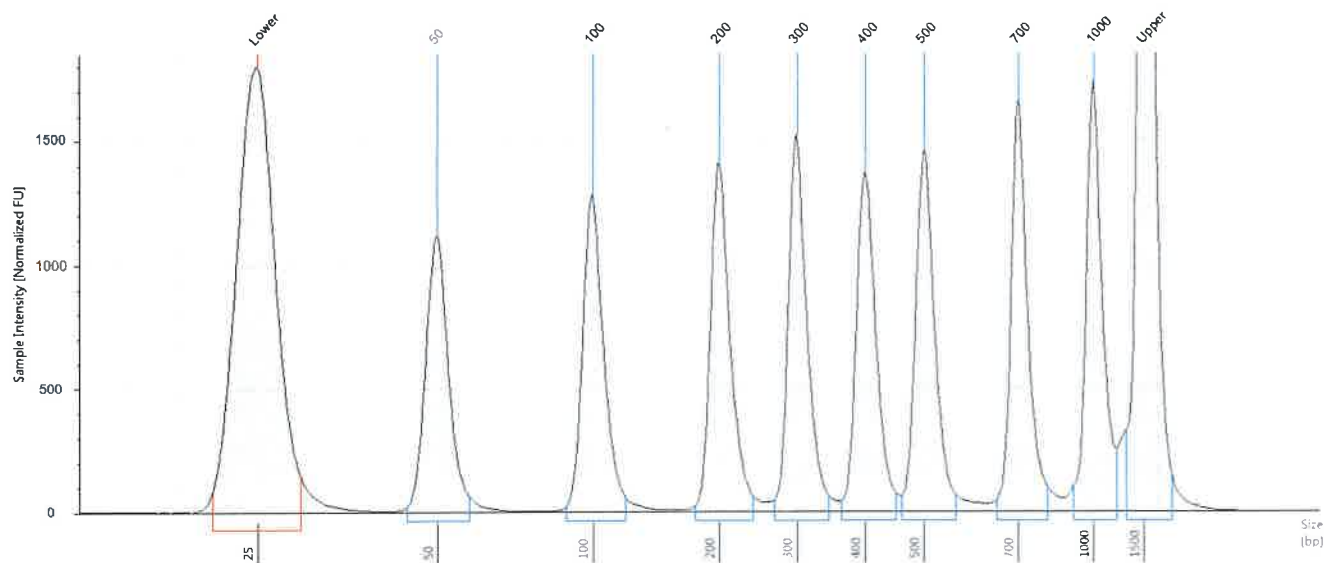


Default image (Contrast 100%), Image is Scaled to Sample

Sample Info

Well	Conc. [ng/ul]	Sample Description	Alert
A1	19.0	Ladder	
B1	4.09	1	
C1	5.92	2	
D1	1.89	3	
E1	2.65	4	
F1	1.88	5	
G1	2.70	6	
H1	4.29	NTC	
A2	4.29	Healthy	
B2	4.76	Pos Control	

A1: Ladder



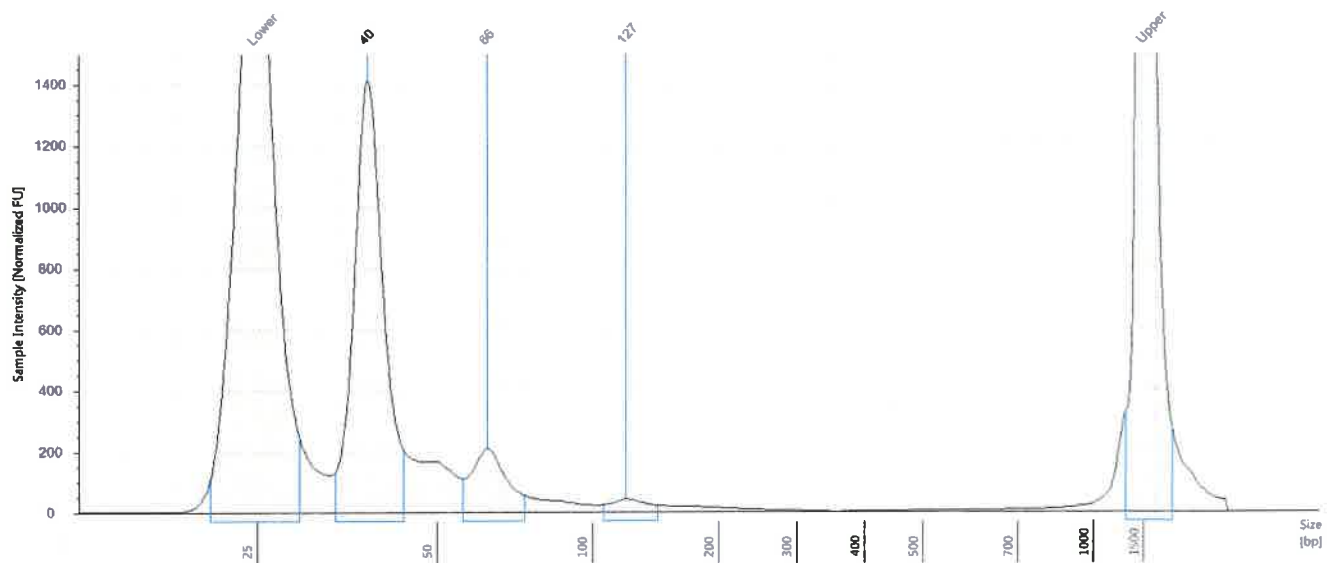
Sample Table

Well	Conc. [ng/ul]	Sample Description	Alert
A1	19.0	Ladder	

Peak Table

Size [bp]	Calibrated Conc. [ng/ul]	Assigned Conc. [ng/ul]	Peak Molarity [nmol/l]	Peak Comment	Area	Observations
25	6.03	-	371		0.927	Lower Marker
50	2.20	-	67.8		0.339	
100	2.32	-	35.7		0.357	
200	2.38	-	18.3		0.366	
300	2.46	-	12.6		0.378	
400	2.31	-	8.88		0.355	
500	2.43	-	7.47		0.374	
700	2.41	-	5.31		0.371	
1000	2.43	-	3.74		0.374	
1500	6.50	6.50	6.67		1.000	Upper Marker

B1: 1



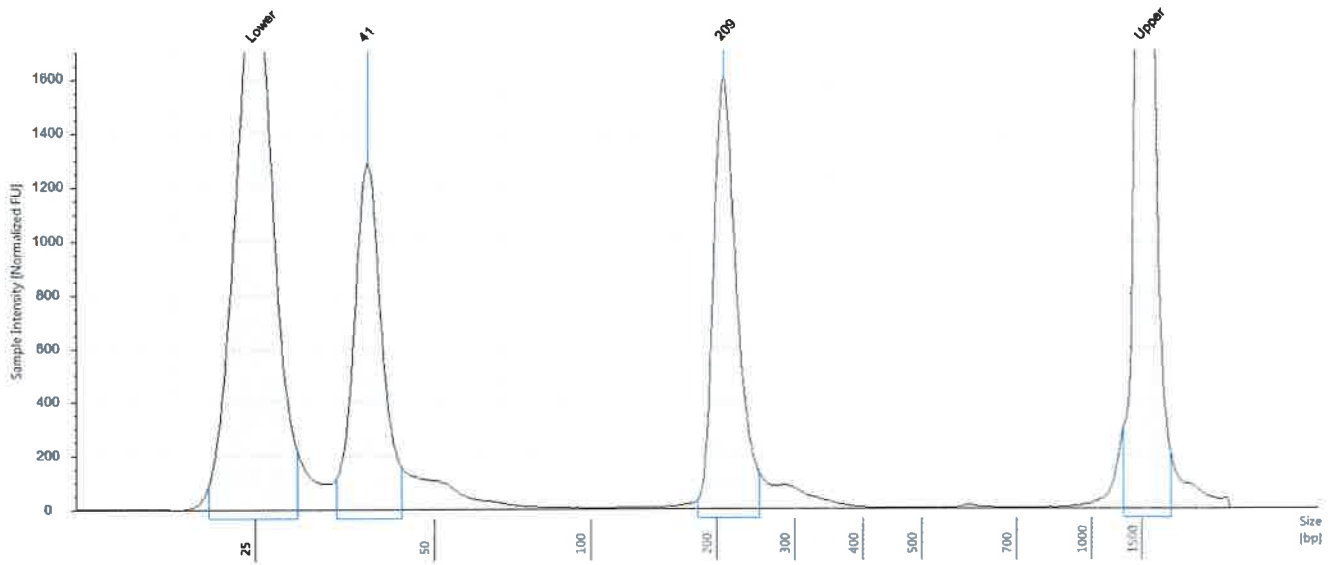
Sample Table

Well	Conc. [ng/μl]	Sample Description	Alert
B1	4.09	1	

Peak Table

Size [bp]	Calibrated Conc. [ng/μl]	Assigned Conc. [ng/μl]	Peak Molarity [nmol/l]	Peak Comment	Area	Observations
25	6.42	-	395		0.987	Lower Marker
40	3.38	-	129		0.520	
66	0.594	-	13.8		0.091	
127	0.121	-	1.47		0.019	
1500	6.50	6.50	6.67		1.000	Upper Marker

C1: 2



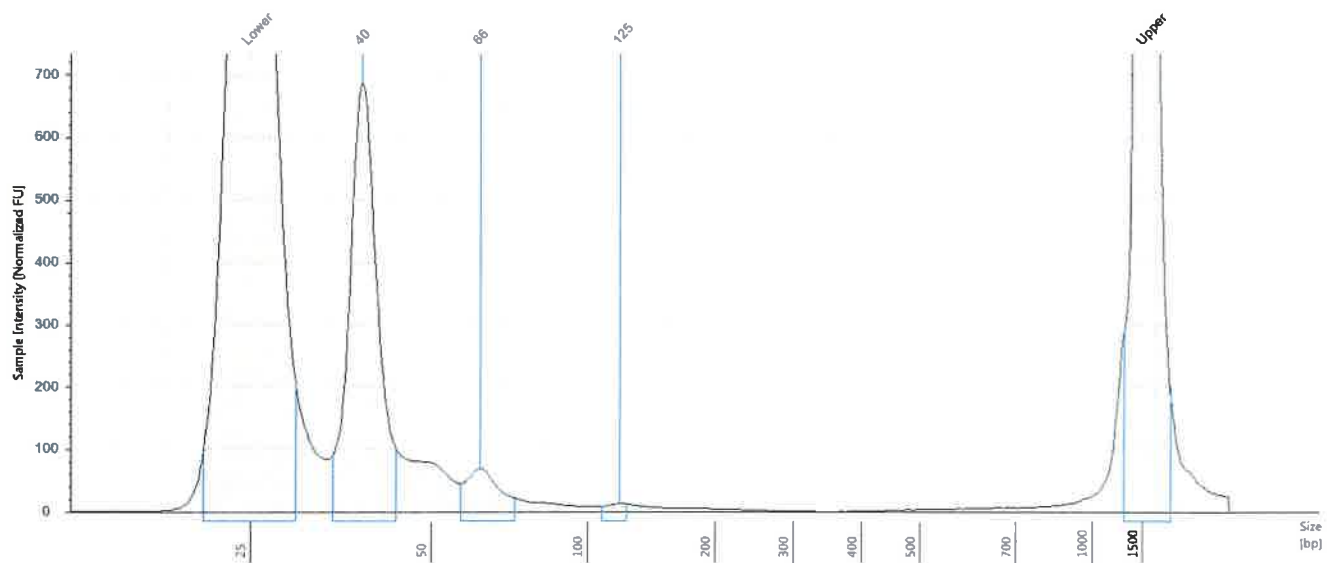
Sample Table

Well	Conc. [ng/ul]	Sample Description	Alert
C1	5.92	2	

Peak Table

Size [bp]	Calibrated Conc. [ng/ul]	Assigned Conc. [ng/ul]	Peak Molarity [nmol/l]	Peak Comment	Area	Observations
25	6.32	-	389		0.972	Lower Marker
41	2.89	-	109		0.445	
209	3.03	-	22.3		0.466	
1500	6.50	6.50	6.67		1.000	Upper Marker

D1: 3



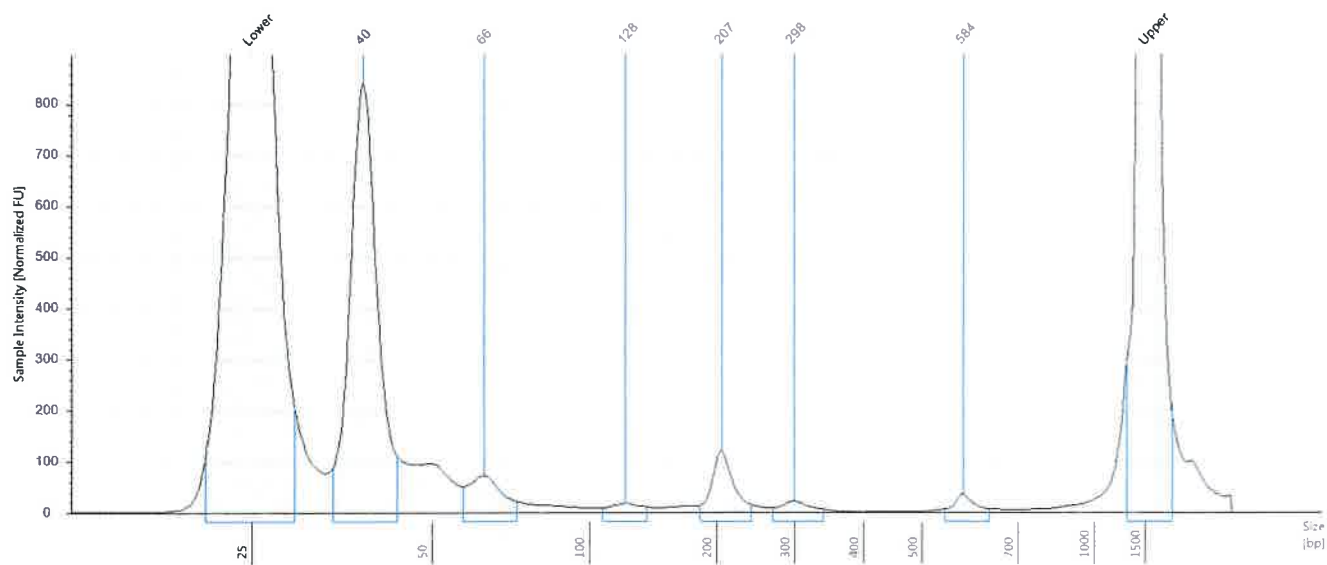
Sample Table

Well	Conc. [ng/ul]	Sample Description	Alert
D1	1.89	3	

Peak Table

Size [bp]	Calibrated Conc. [ng/ul]	Assigned Conc. [ng/ul]	Peak Molarity [nmol/l]	Peak Comment	Area	Observations
25	6.32	-	389		0.973	Lower Marker
40	1.67	-	63.5		0.257	
66	0.200	-	4.67		0.031	
125	0.0212	-	0.260		0.003	
1500	6.50	6.50	6.67		1.000	Upper Marker

E1: 4



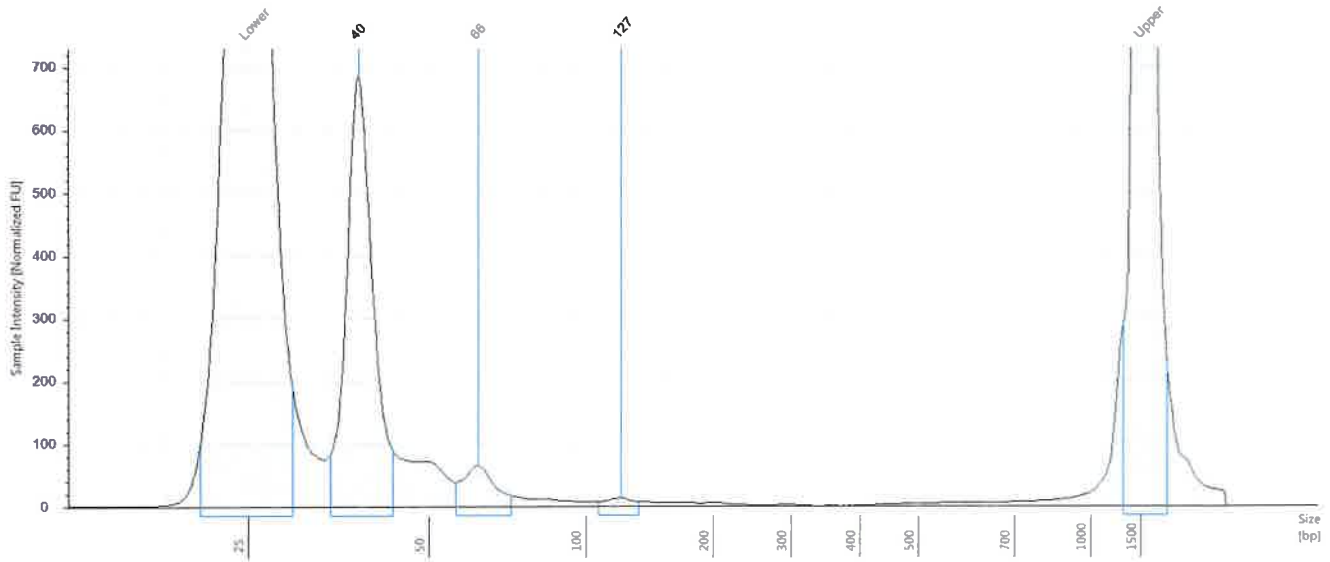
Sample Table

Well	Conc. [ng/ul]	Sample Description	Alert
E1	2.65	4	

Peak Table

Size [bp]	Calibrated Conc. [ng/ul]	Assigned Conc. [ng/ul]	Peak Molarity [nmol/l]	Peak Comment	Area	Observations
25	6.31	-	388		0.970	Lower Marker
40	2.06	-	78.1		0.316	
66	0.213	-	4.94		0.033	
128	0.0458	-	0.551		0.007	
207	0.225	-	1.68		0.035	
298	0.0525	-	0.271		0.008	
584	0.0594	-	0.157		0.009	
1500	6.50	6.50	6.67		1.000	Upper Marker

F1: 5



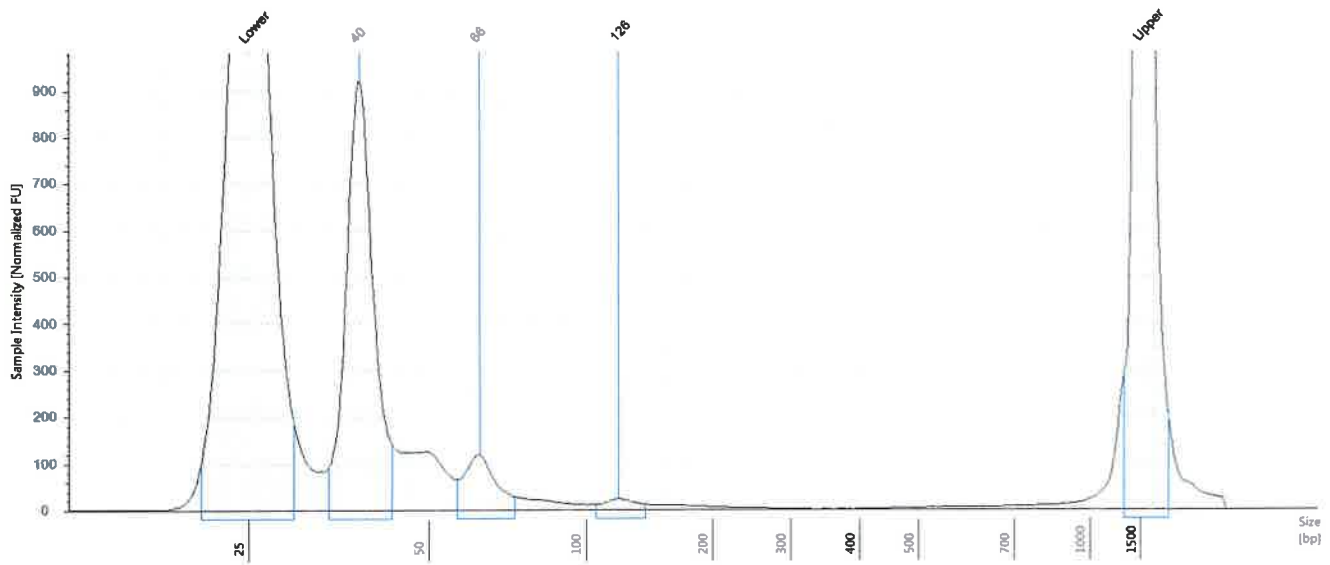
Sample Table

Well	Conc. [ng/ul]	Sample Description	Alert
F1	1.88	5	

Peak Table

Size [bp]	Calibrated Conc. [ng/ul]	Assigned Conc. [ng/ul]	Peak Molarity [nmol/l]	Peak Comment	Area	Observations
25	6.28	-	386		0.965	Lower Marker
40	1.66	-	63.4		0.256	
66	0.188	-	4.40		0.029	
127	0.0317	-	0.383		0.005	
1500	6.50	6.50	6.67		1.000	Upper Marker

G1: 6



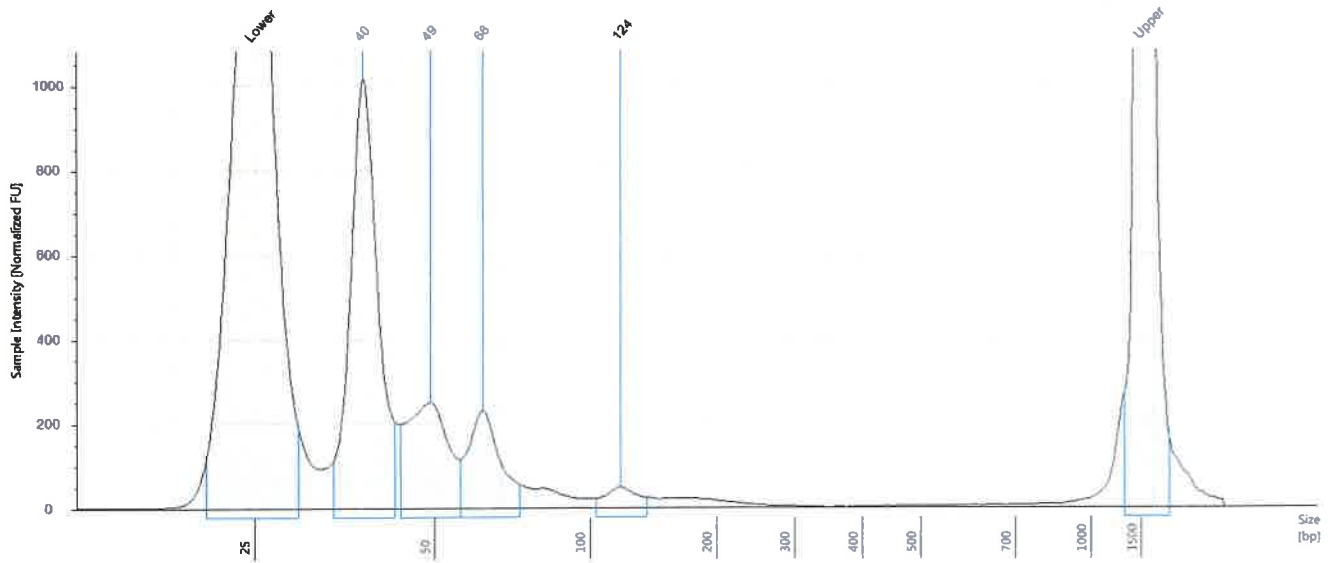
Sample Table

Well	Conc. [ng/ul]	Sample Description	Alert
G1	2.70	6	

Peak Table

Size [bp]	Calibrated Conc. [ng/ul]	Assigned Conc. [ng/ul]	Peak Molarity [nmol/l]	Peak Comment	Area	Observations
25	6.39	-	393		0.983	Lower Marker
40	2.29	-	87.0		0.352	
66	0.342	-	7.98		0.053	
126	0.0659	-	0.807		0.010	
1500	6.50	6.50	6.67		1.000	Upper Marker

H1: NTC



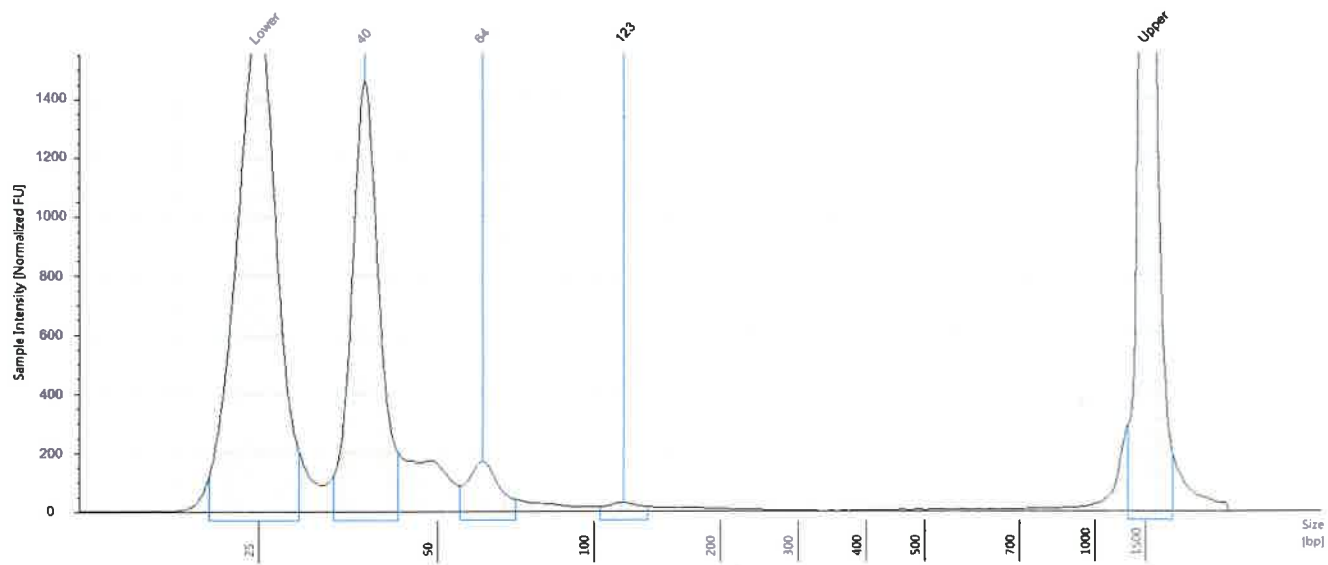
Sample Table

Well	Conc. [ng/ul]	Sample Description	Alert
H1	4.29	NTC	

Peak Table

Size [bp]	Calibrated Conc. [ng/ul]	Assigned Conc. [ng/ul]	Peak Molarity [nmol/l]	Peak Comment	Area	Observations
25	6.39	-	393		0.983	Lower Marker
40	2.52	-	96.7		0.388	
49	0.960	-	29.9		0.148	
66	0.672	-	15.8		0.103	
124	0.139	-	1.72		0.021	
1500	6.50	6.50	6.67		1.000	Upper Marker

A2: Healthy



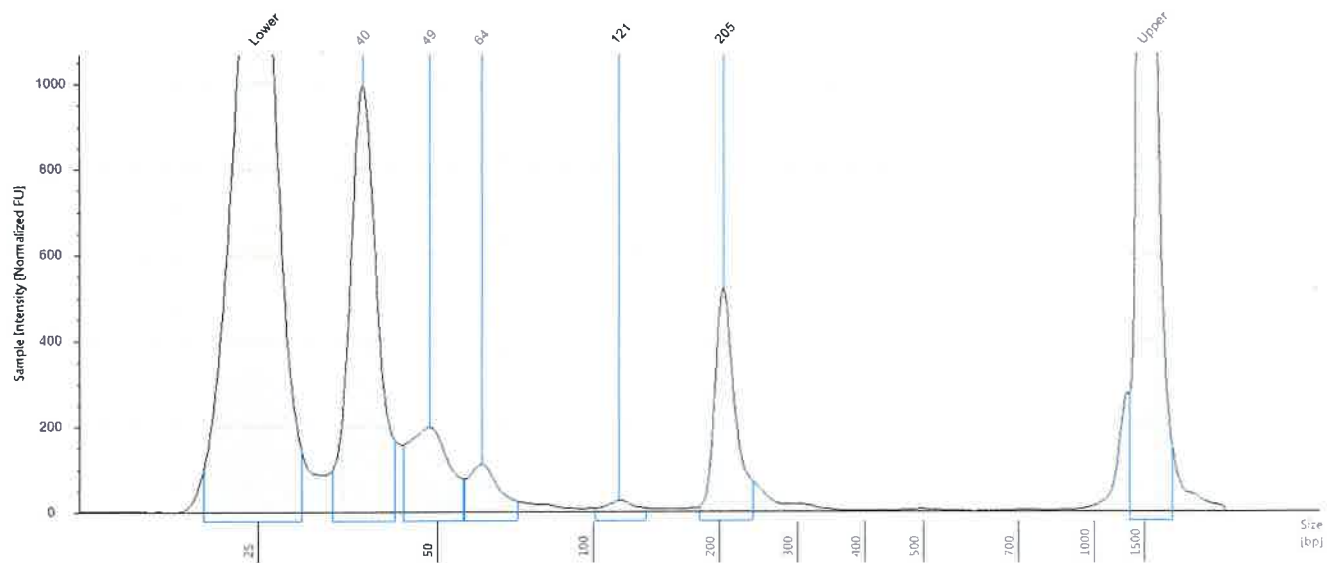
Sample Table

Well	Conc. [ng/ul]	Sample Description	Alert
A2	4.29	Healthy	

Peak Table

Size [bp]	Calibrated Conc. [ng/ul]	Assigned Conc. [ng/ul]	Peak Molarity [nmol/l]	Peak Comment	Area	Observations
25	6.36	-	391		0.979	Lower Marker
40	3.72	-	143		0.572	
64	0.485	-	11.6		0.075	
123	0.0850	-	1.06		0.013	
1500	6.50	6.50	6.67		1.000	Upper Marker

B2: Pos Control



Sample Table

Well	Conc. [ng/ul]	Sample Description	Alert
B2	4.76	Pos Control	

Peak Table

Size [bp]	Calibrated Conc. [ng/ul]	Assigned Conc. [ng/ul]	Peak Molarity [nmol/l]	Peak Comment	Area	Observations
25	6.62	-	407		1.019	Lower Marker
40	2.59	-	101		0.399	
49	0.781	-	24.6		0.120	
64	0.321	-	7.66		0.049	
121	0.0657	-	0.838		0.010	
205	0.995	-	7.48		0.153	
1500	6.50	6.50	6.67		1.000	Upper Marker

