



# Het Groene Hart The Green Heart

Dr. Patricia Braaksma

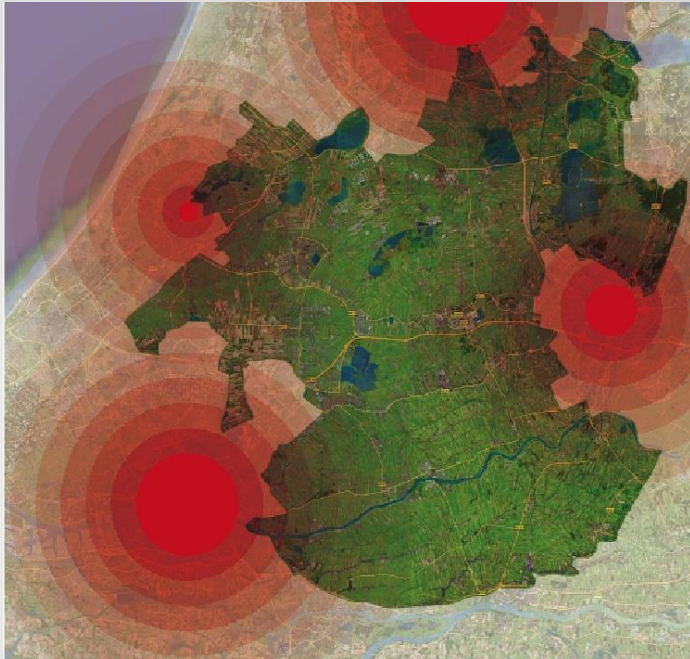
## Definition of 'het Groene Hart'

- Introduced in 1960 in the National Spatial Planning Note
- Unique landscape, surrounded by the four big cities Amsterdam, Rotterdam, Utrecht and The Hague (together 'Randstad')
- Land use is mainly agricultural
- 180.000 hectare = 445.000 acres
- 700.000 inhabitants
- 7 million people living around Groene Hart

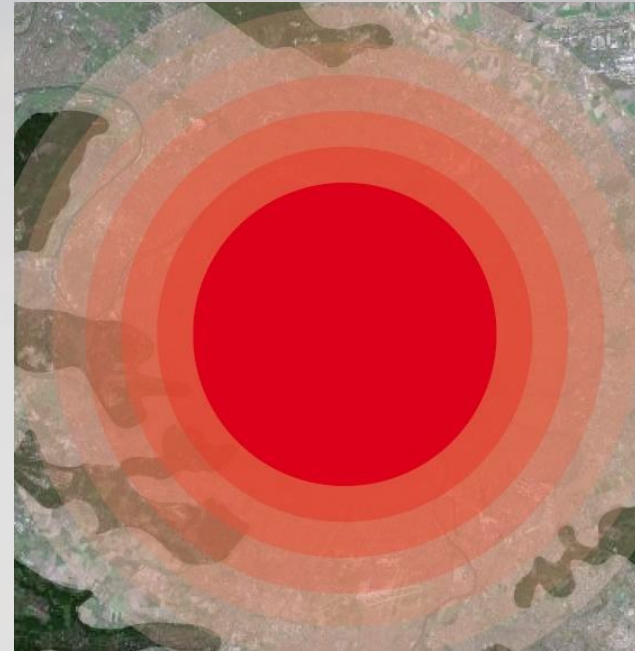


# Groene Hart in de Randstad

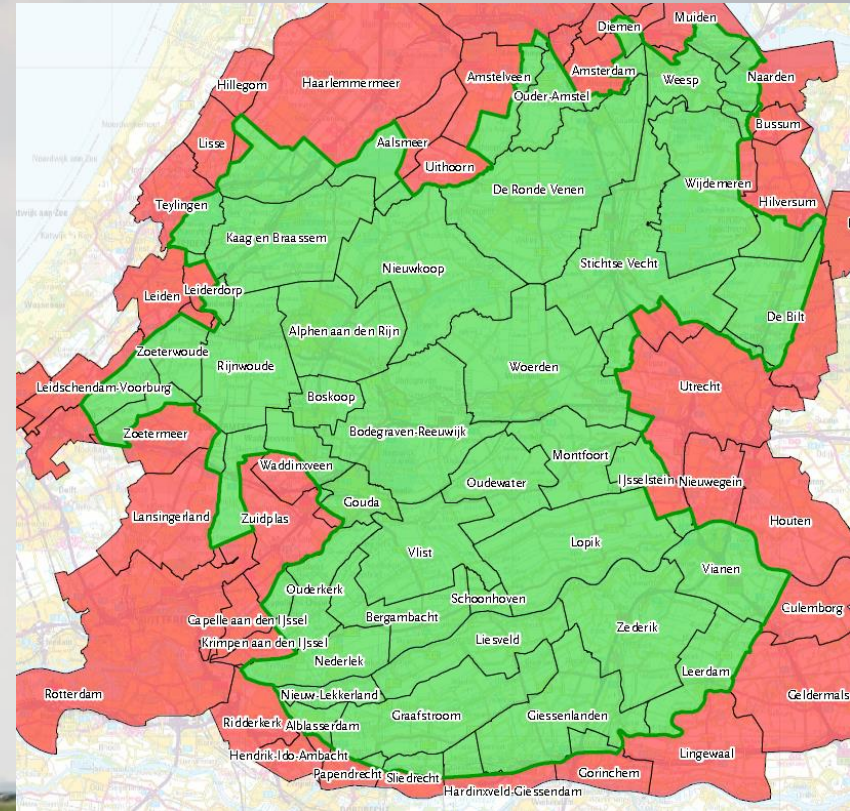
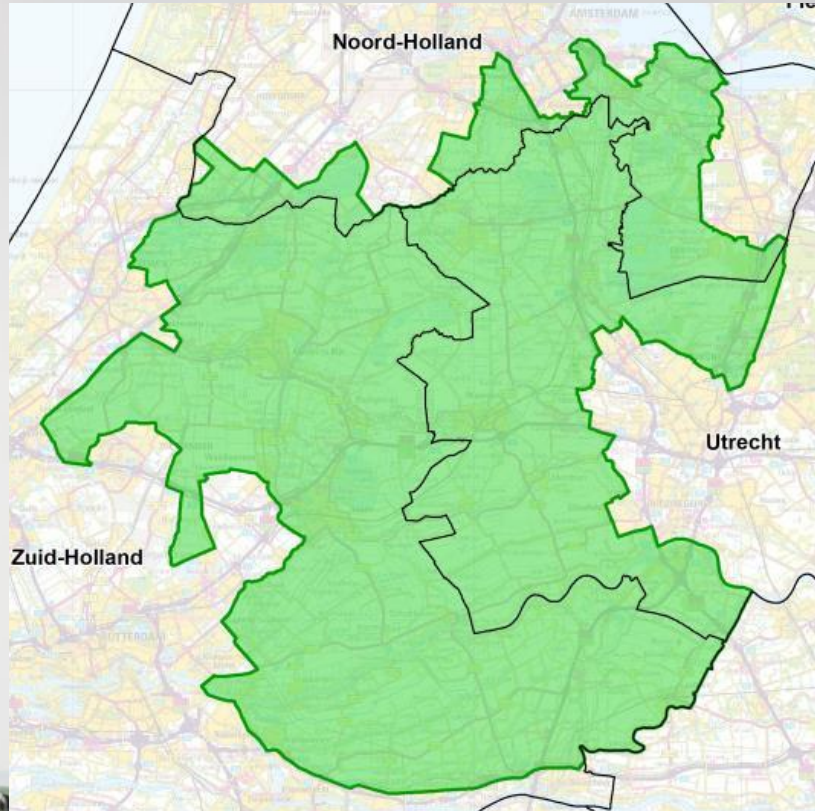
Randstad



Paris



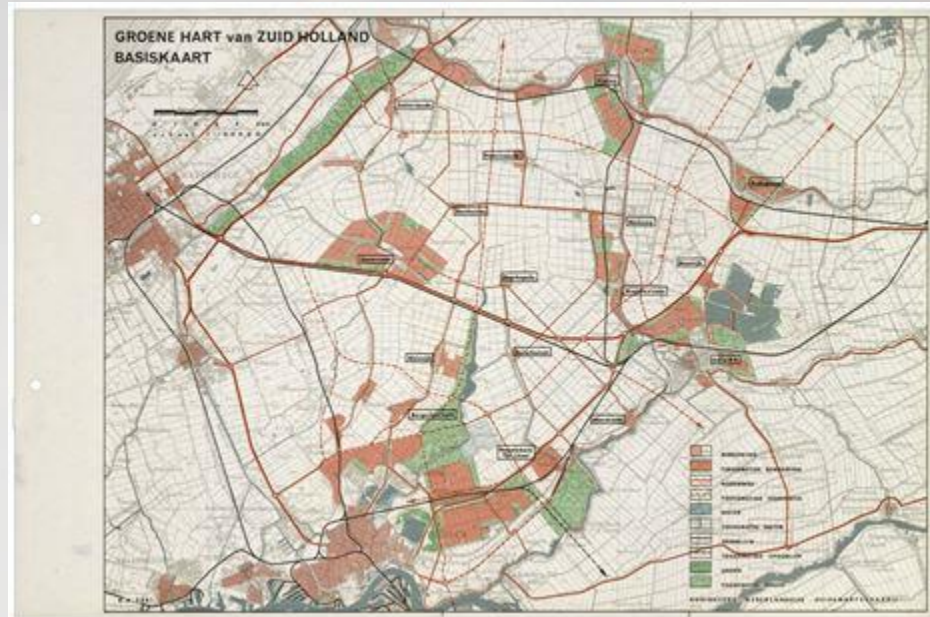
# 3 Different Provinces, 40 Different Municipalities...



## ...and 5 Water Authorities



# Concept in spatial planning

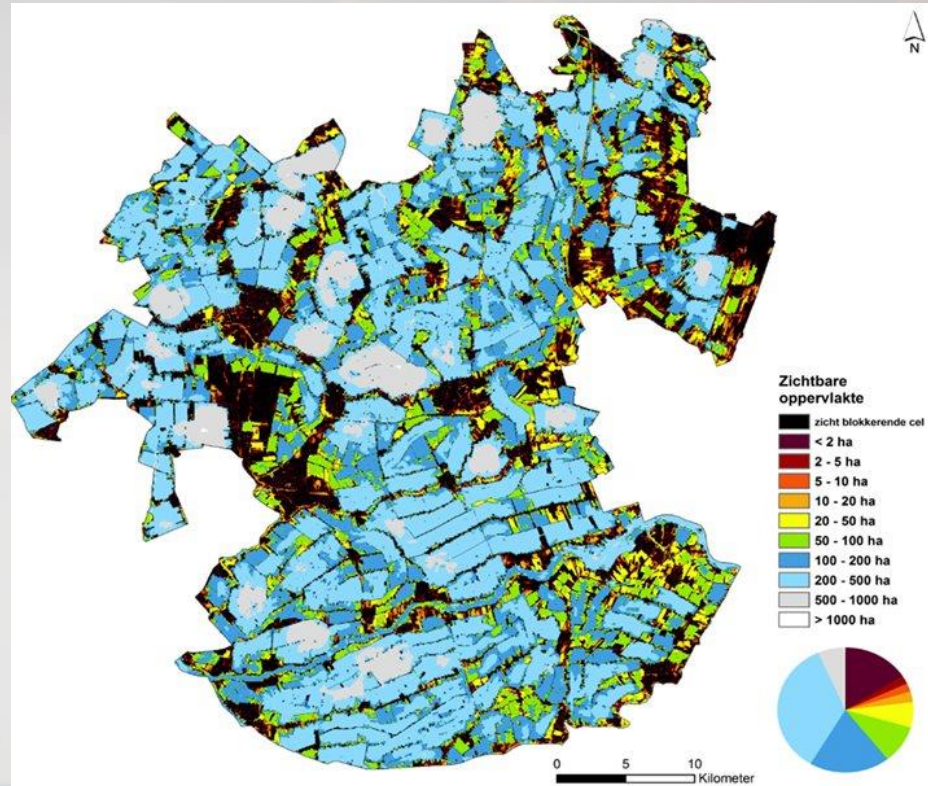


# Development of spatial planning

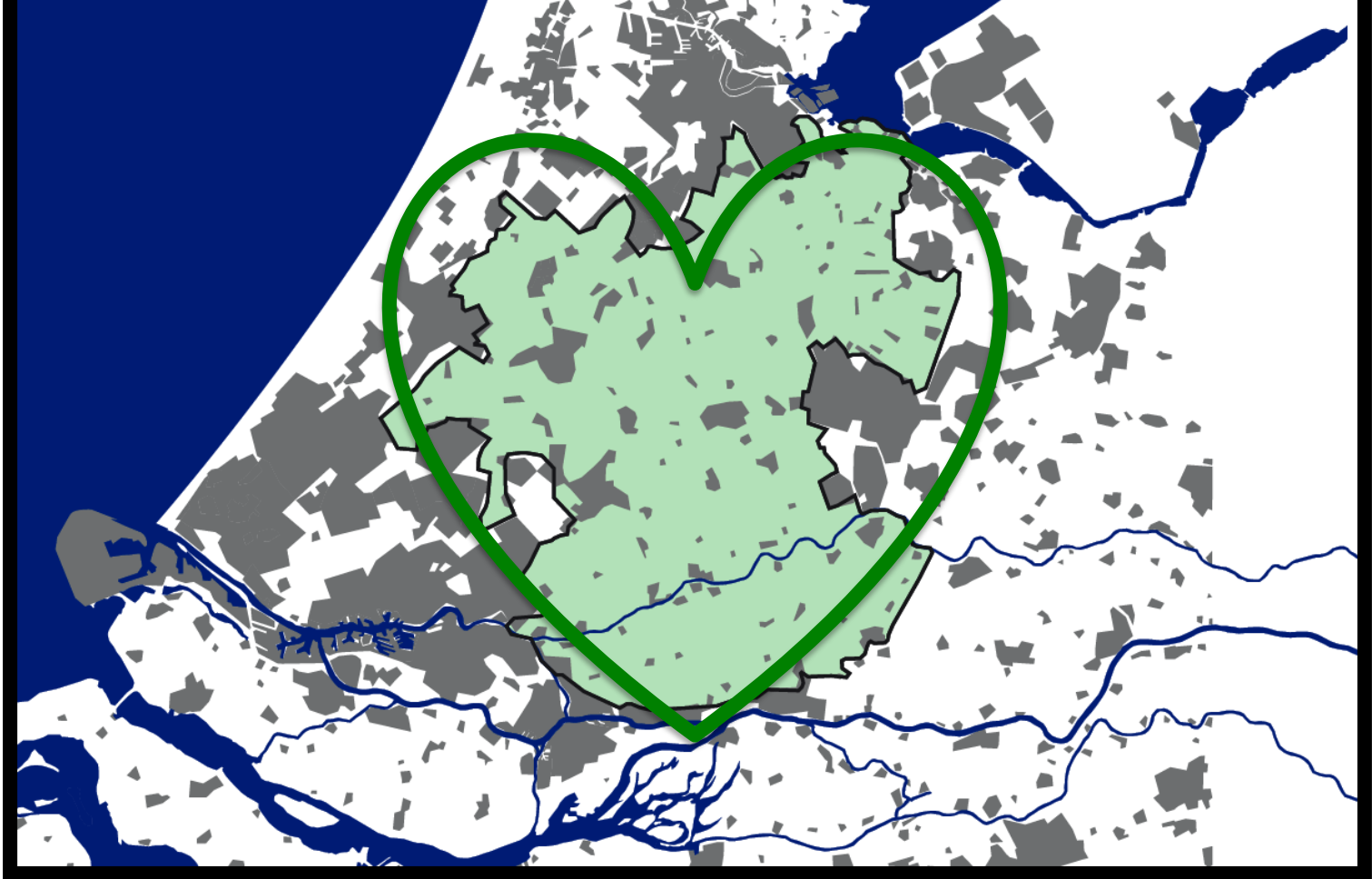
- '80 – '90 National policy – conservation – top-down process
- '00 – '10 National policy – marketing and branding – National Landscape
- '10 – Decentralization – participation – bottom-up process



# Unique, open landscape

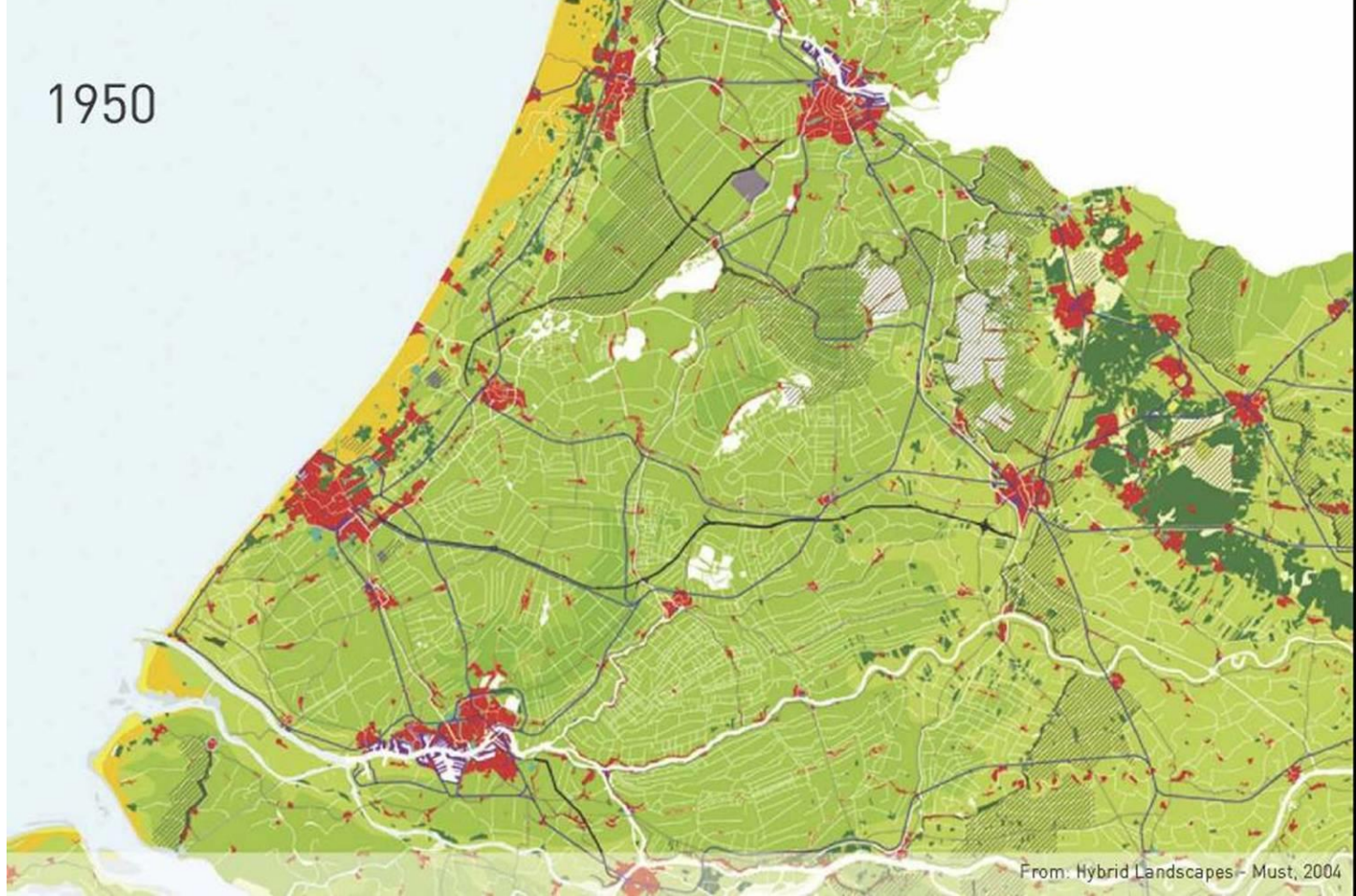






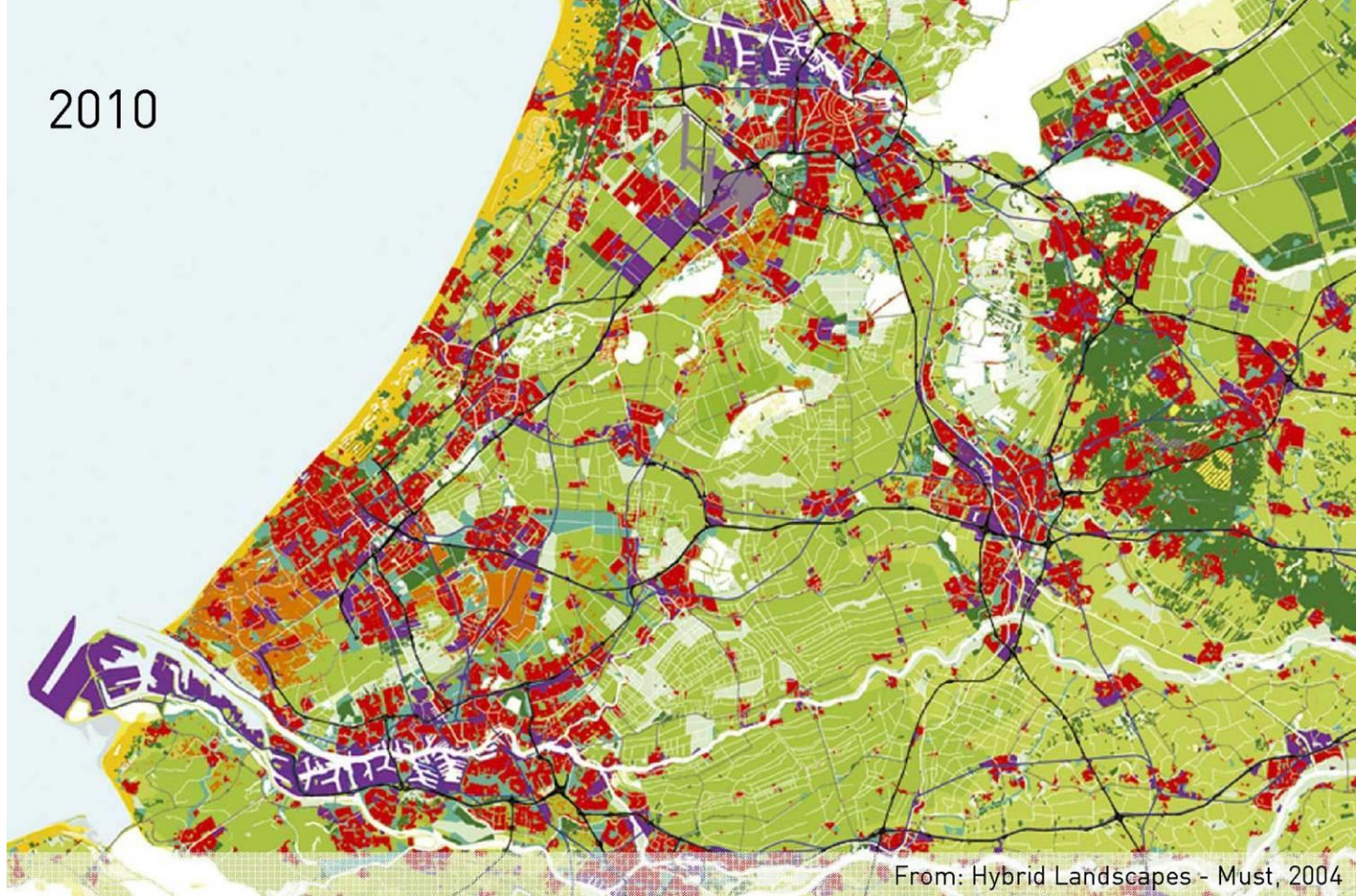
**7 Reasons to cherish the Green Heart**

1950



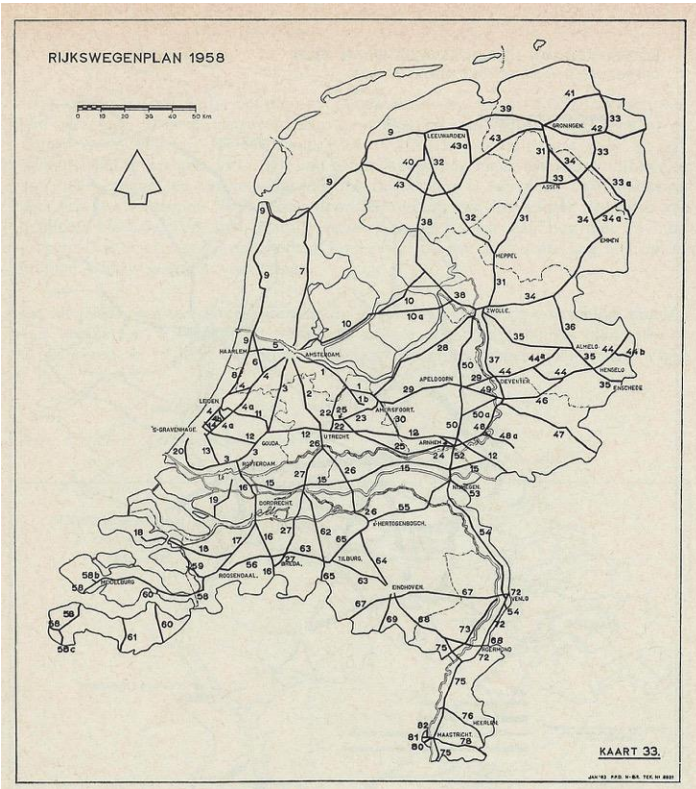
1. HET GROENE HART = a saved landscape

2010



From: Hybrid Landscapes - Must, 2004

1. HET GROENE HART = a saved landscape



Rijksweg 3 ontbreekt



HSL tunnel

1. HET GROENE HART = a saved landscape



2. HET GROENE HART = a historical polder landscape



2. HET GROENE HART = a historical polderlandscape

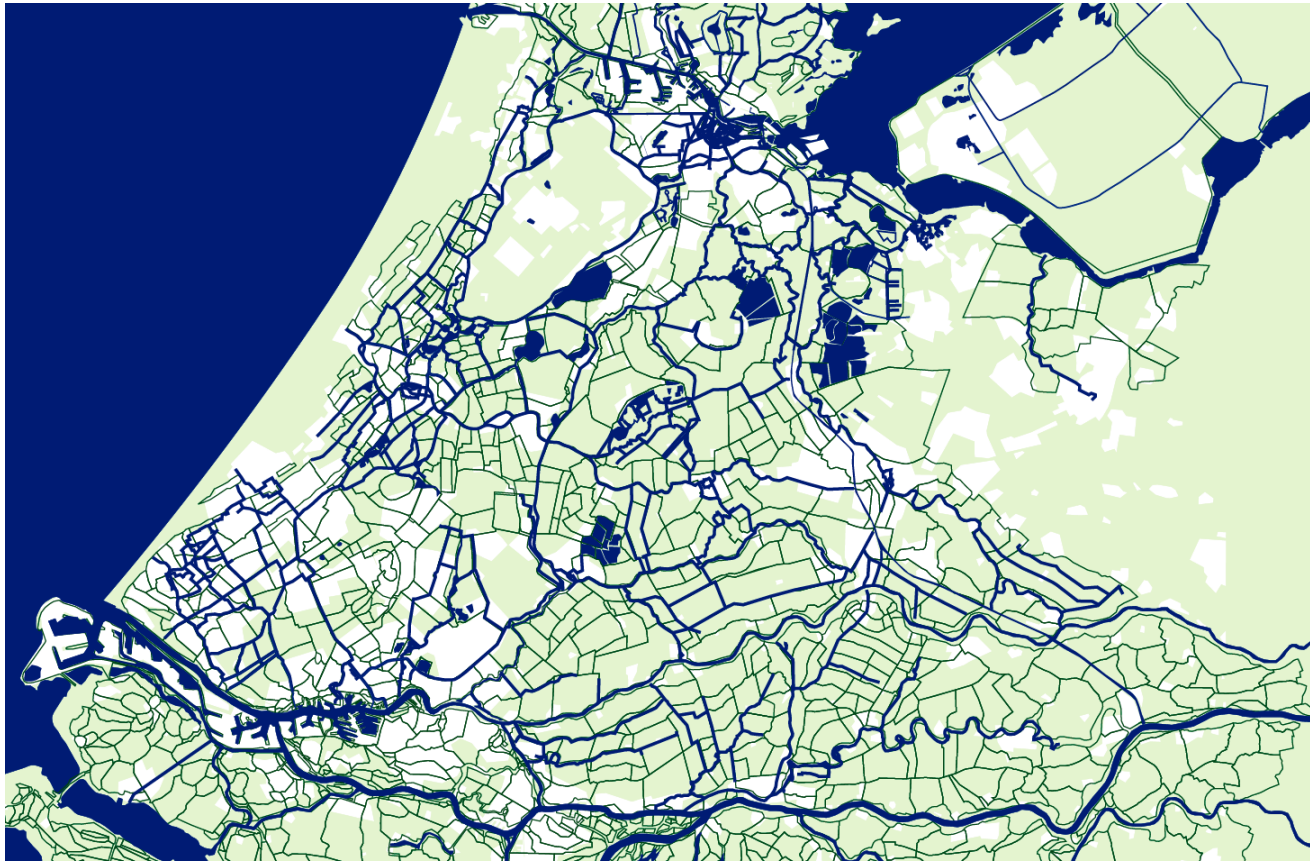


2. HET GROENE HART = a historical polder landscape



3. HET GROENE HART = green space in the RANDSTAD





3. HET GROENE HART = green space in the RANDSTAD



3. HET GROENE HART = green space in the RANDSTAD



Willem Roelofs- 1882  
meimaand te Noorden

4. HET GROENE HART = WATER+LAND

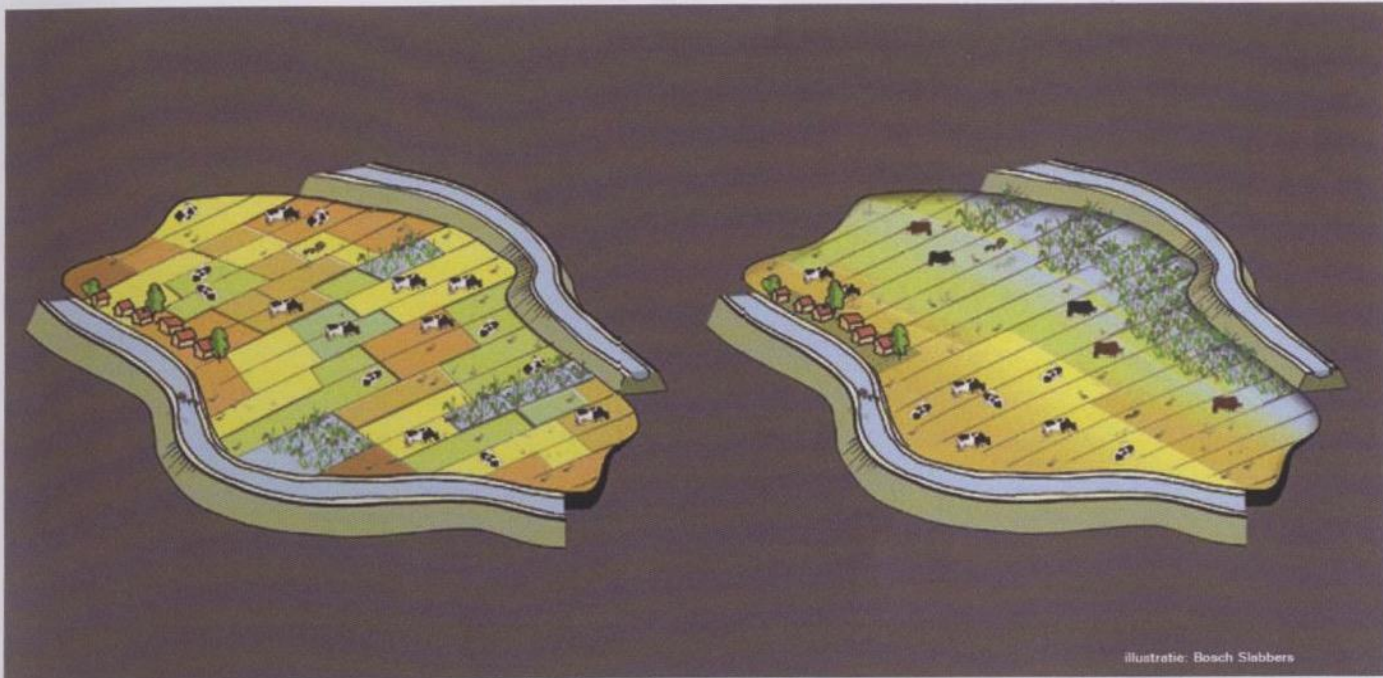


Krimpenerwaard,  
2015

4. HET GROENE HART = WATER+LAND

*Functie volgt peil*

griekse en latijnse teksten



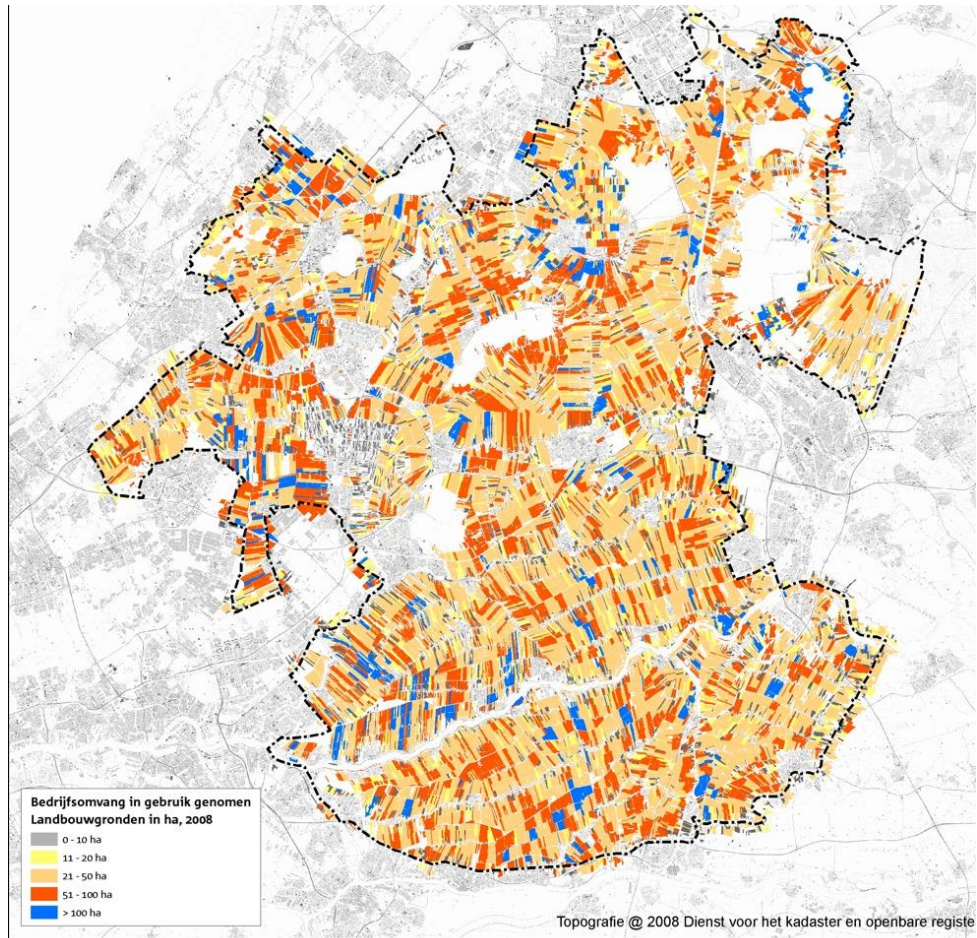
4. HET GROENE HART = WATER+LAND



## 5. HET GROENE HART = VEENWEIDE-NATUUR

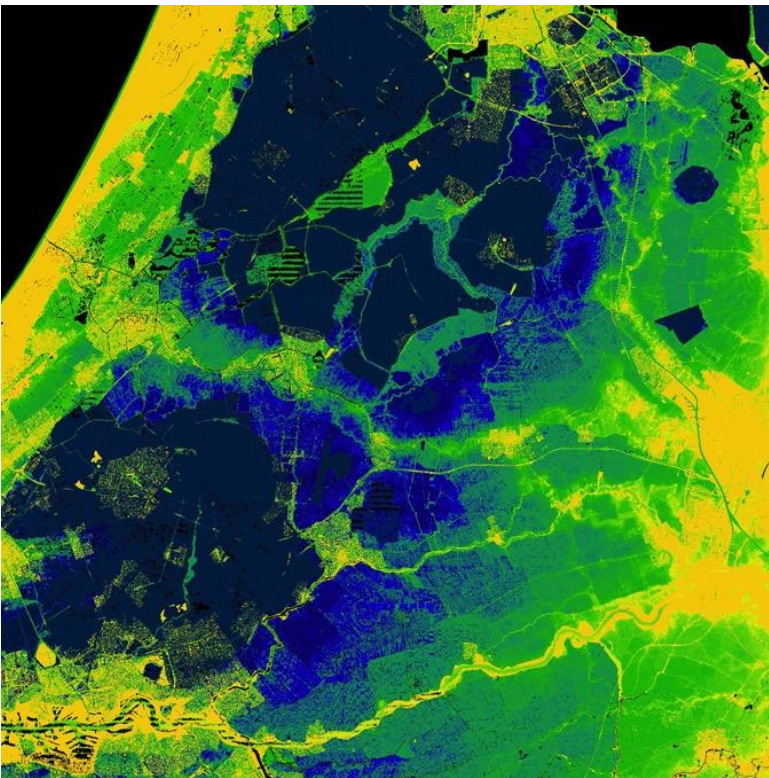


6. HET GROENE HART = KOE IN DE WEI



## 6. HET GROENE HART = KOE IN DE WEI

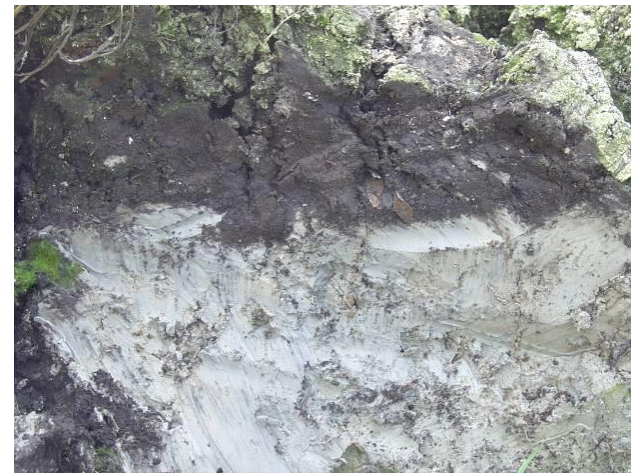
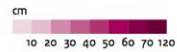
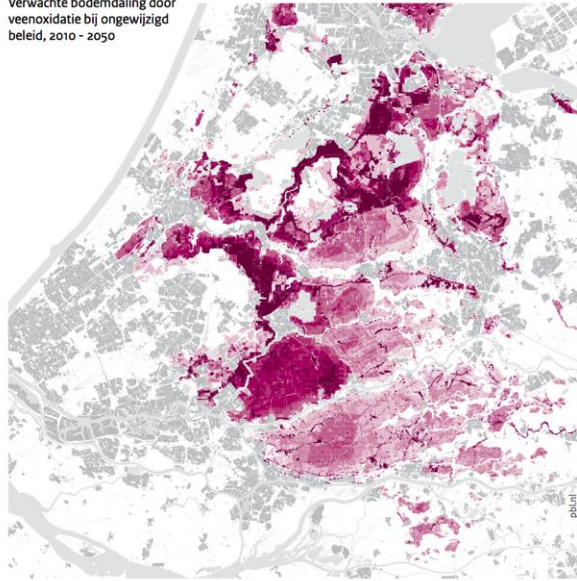




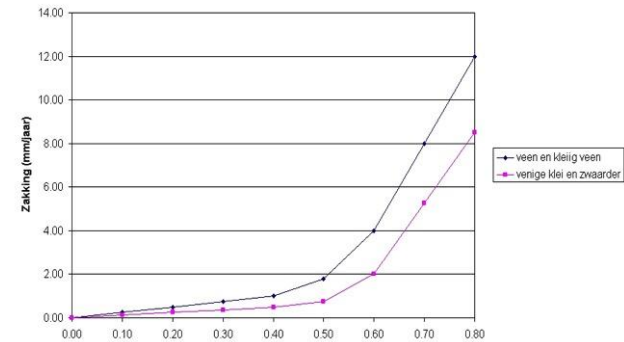
7. HET GROENE HART= EEN KWETSBAAR ORGANISME

### De veenbodem blijft dalen als we niet ingrijpen

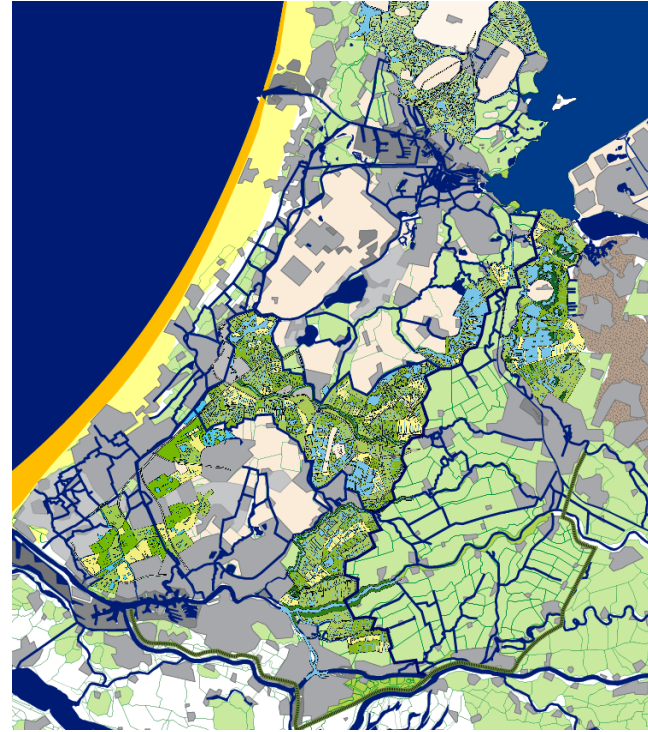
Verwachte bodemdaling door  
veenoxidatie bij ongewijzigd  
beleid, 2010 - 2050



Metingen van de zakking



## 7. HET GROENE HART= EEN KWETSBAAR ORGANISME



7. HET GROENE HART= EEN KWETSBAAR ORGANISME

# Three roles of the Green Heart Steering Committee

Monitoring



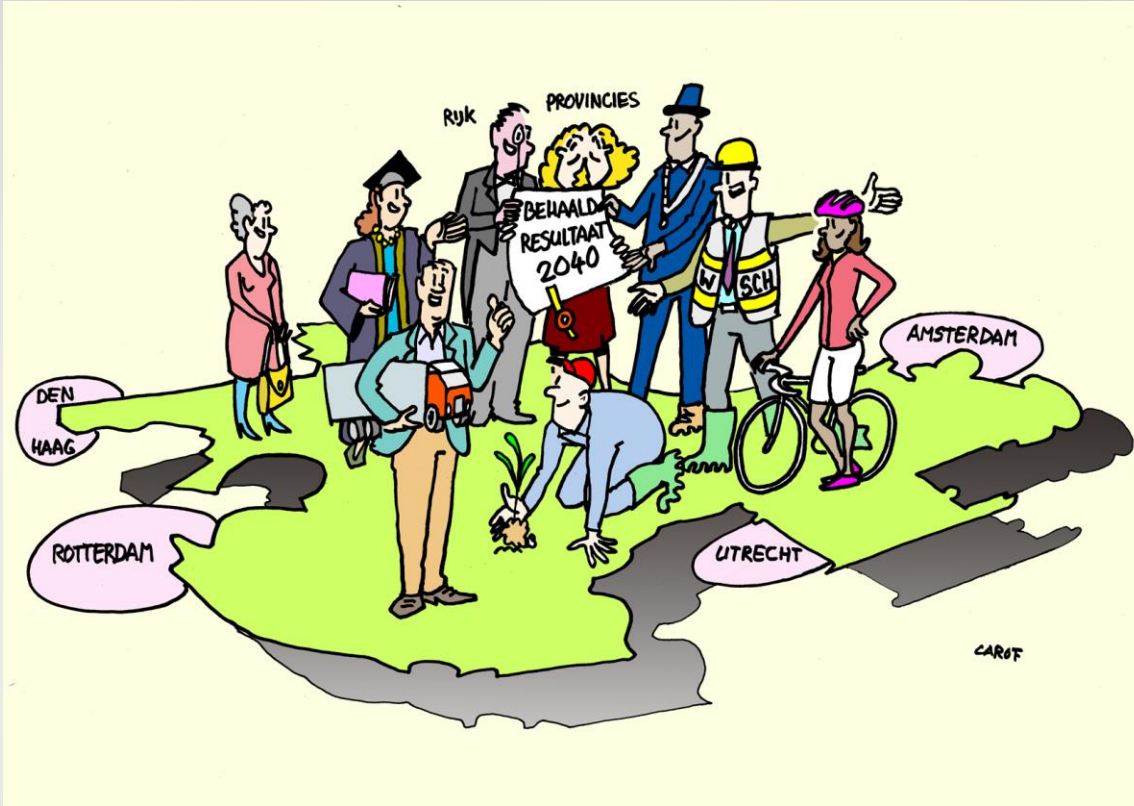
Connecting/  
networking



Activating



# Vision: Perspective Groene Hart 2040

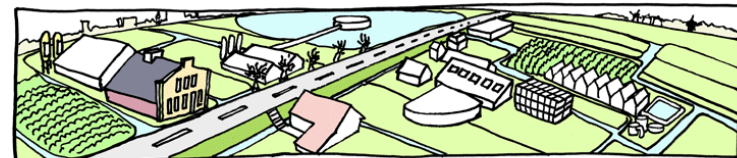
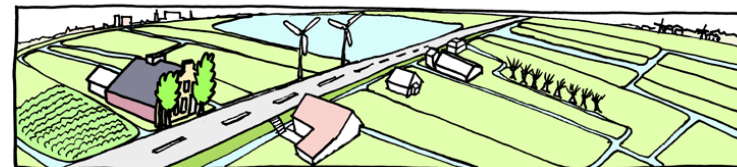


## PERSPECTIEF Groene Hart 2040



## Perspective Green Heart 2040

- Subsidence
- Sustainable energy
- Economic growth
  - agriculture
  - tourism and recreation
  - circular economy
- Mobility
- Landscape and identity



FUNCTIES EN OPENHEID VERANDEREN, MAAR KARAKTER BLIJFT

# Economy of the Green Heart

1. Retail and wholesale (22%)
2. Health care (14%)
3. Industry (11%)
4. Construction and engineering (8%)
5. Business services (8 %)

Agricultural sector is only 4,1% of the Green Heart economy



## Opportunities in economy

- + Tourism and recreational businesses
- + Local produce: connection between Randstad and 'backyard'
- + Hotspot for agricultural innovations





## Threats in economy

- International transportation corridor: ideal location for transportation businesses?
- Subsidence of peat soil: the Green Heart is 'sinking'
- Complexity of administrative organizations: difficulty in decision-making

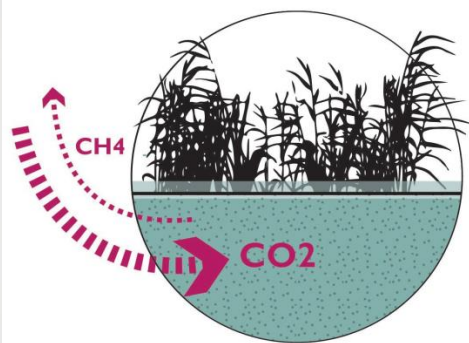




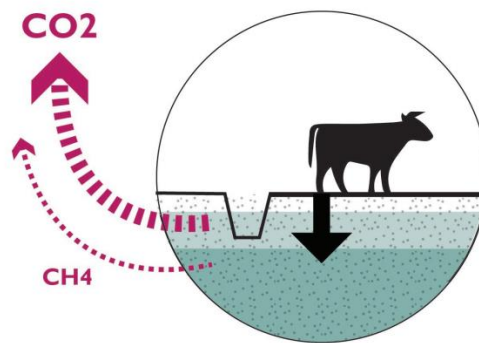
## Design Research – soil, water and land use

### BODEMDALING

disbalans broeikasgassen



Van CO2 sink...



... naar CO2 uitstoter



[www.stuurgroepgroenehart.nl](http://www.stuurgroepgroenehart.nl)