

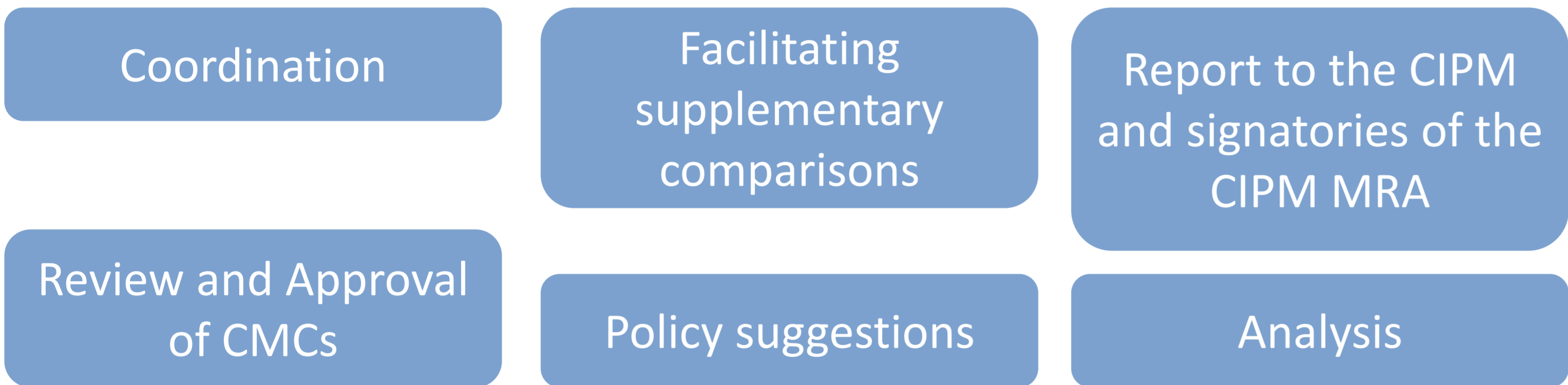
CIPM MRA: JCRB and KCDB

Joint Committee of the Regional Metrology Organizations and the BIPM (JCRB)
Key Comparison Database (KCDB)

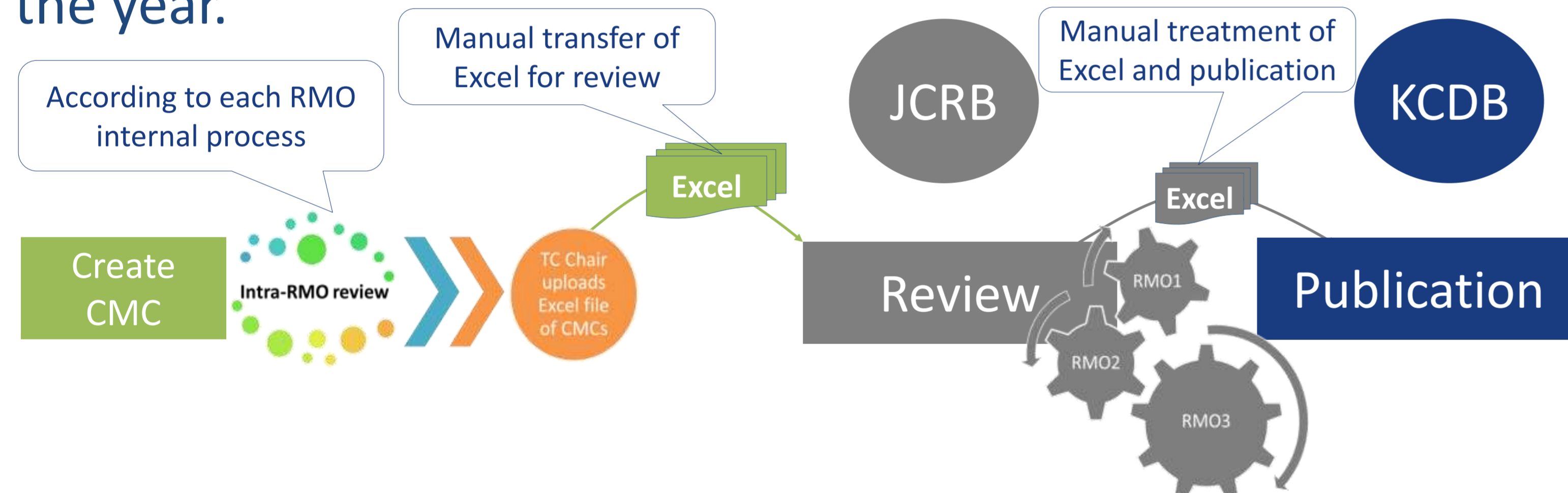


The CIPM Mutual Recognition Arrangement (CIPM MRA) is the framework through which National Metrology Institutes demonstrate the international equivalence of their measurement standards and the calibration and measurement certificates they issue.

The terms of reference of the **JCRB** are defined in Appendix E of the CIPM MRA:

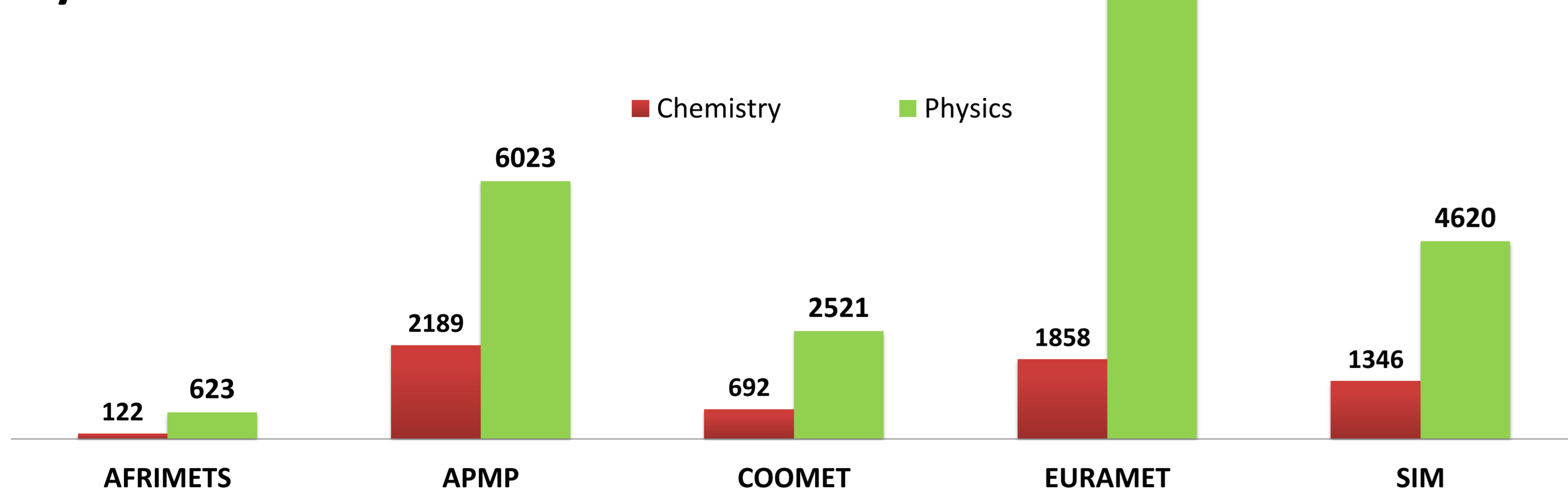


The JCRB meets once or twice a year to discuss current issues and tasks and actively collaborates by electronic means during the year.

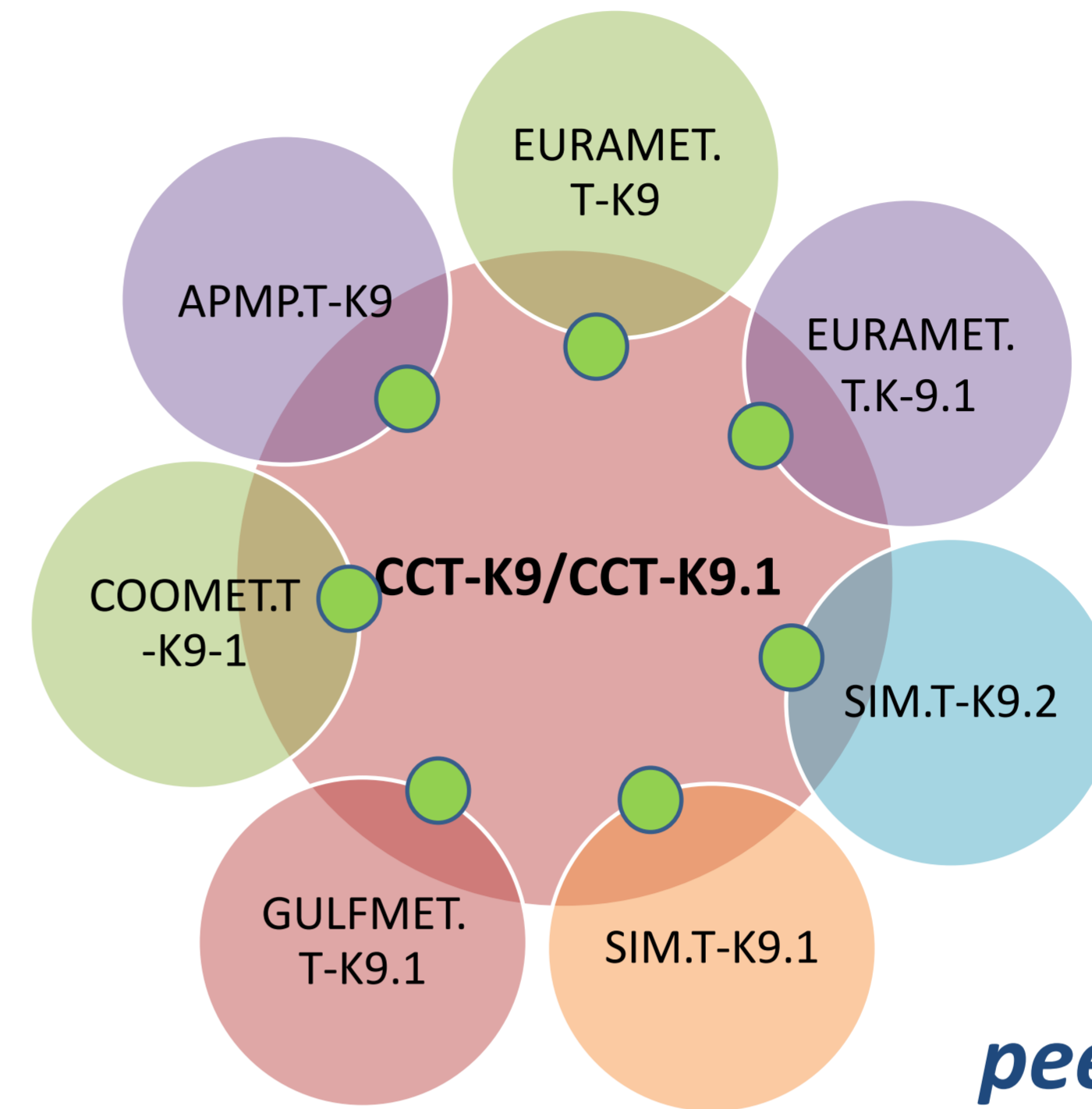


The review of the **calibration and measurement capabilities** (CMCs) of an RMO by other RMOs is implemented on the restricted-access JCRB web-portal

Number of CMCs published in the KCDB by RMOs



The **KCDB** forms an evidence-based set of the degree of equivalence of national measurement standards, derived from the results of **comparisons** and **CMCs**. This data is openly available on the BIPM website.

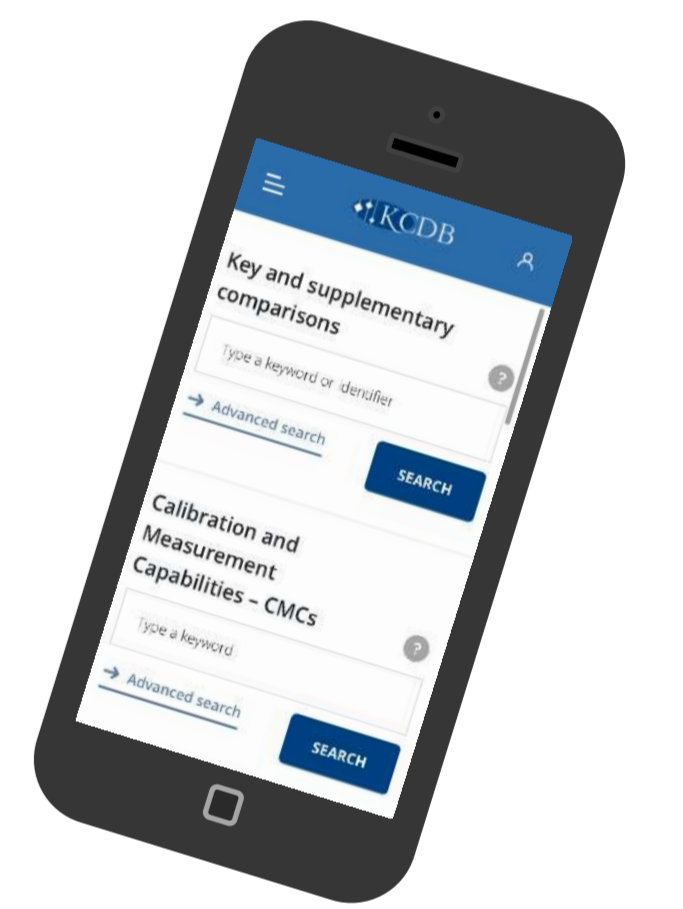


Example of determining the degrees of equivalence in thermometry

● - linking institutes

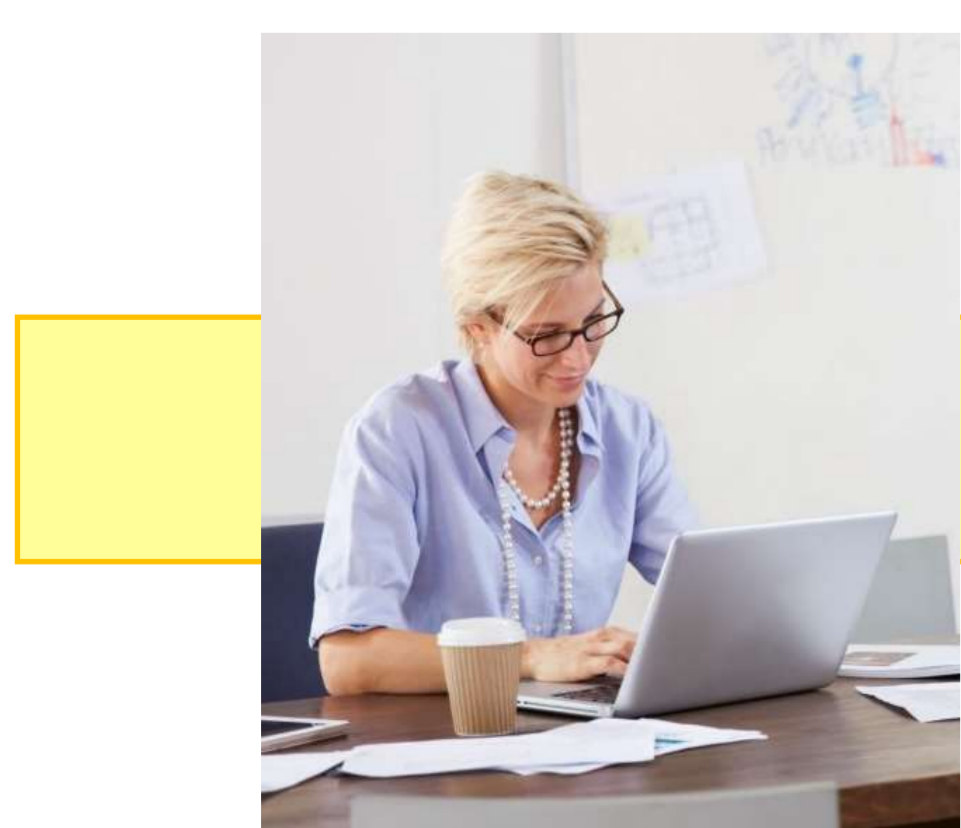
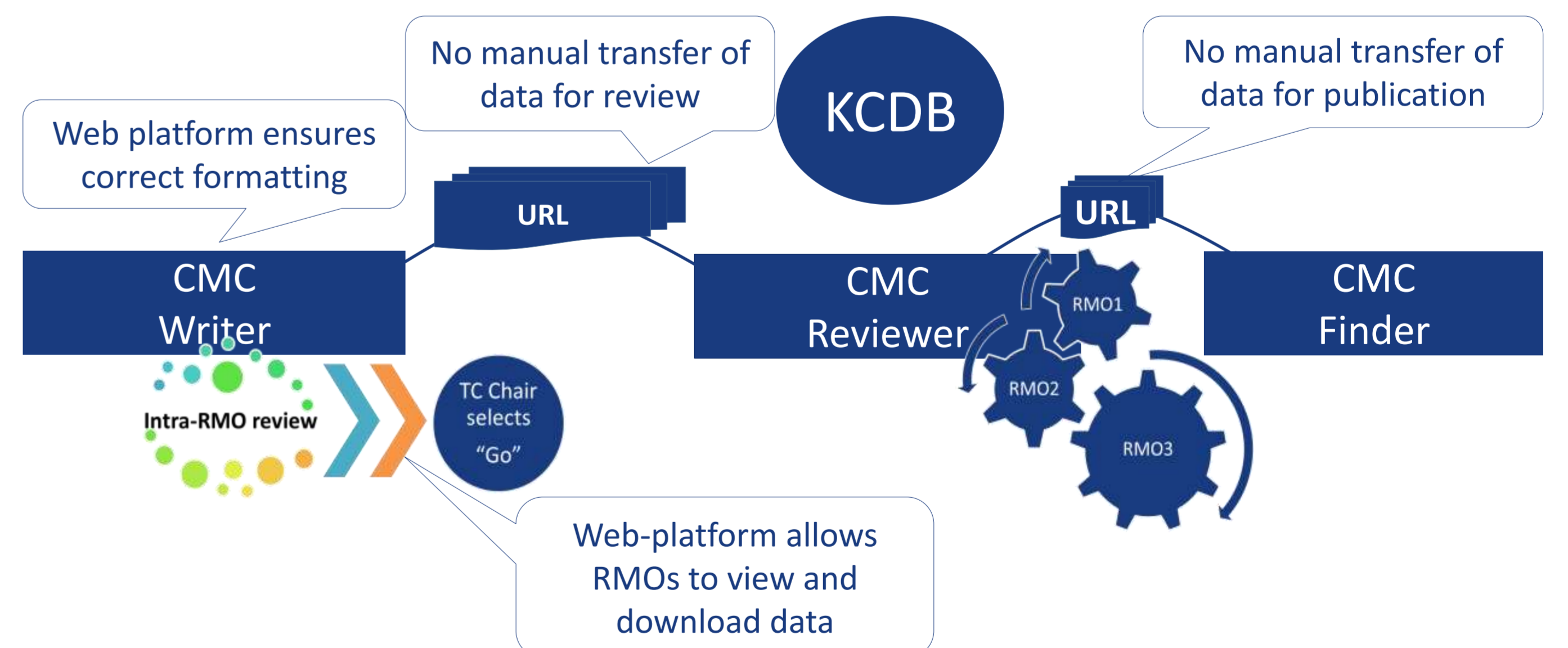
All data listed in the KCDB have been peer reviewed, approved and recognized within the CIPM MRA

From its start in 1999, the KCDB has been adapted continuously to meet the demands of its stakeholders. However, it is now time to make a major **revision**.



A **new tool** is being developed to give support during the complete review process. **Improved search facilities** will be implemented and an **interactive statistical tool** will be made available.

➔ Implementation is scheduled for 2019.



CMC drafted at the NMI and placed on the CMC platform...



...made accessible to the Technical Committee Chair of the RMO for review...



...subsequently made accessible to the JCRB for approval...



...and made available on the KCDB webpages.

<https://kcdb.bipm.org/>