



MINISTRY OF TRANSPORTATION
AND COMMUNICATIONS R.O.C.



Maarten Balk

Manager Type Approval

July 5, 2018

Tasks, mission, goals

The RDW is a public service provider in the mobility chain. The RDW has extensive expertise due to its years of experience in the execution of its statutory and assigned tasks.

Tasks in the area of licensing of vehicles and vehicle parts, supervision and control, registration, information provision and issuing documents.

Tasks that the RDW executes in close collaboration with various partners in the mobility chain. This gives the RDW a clear position in this chain, with its mission being: RDW, partner in mobility.



Tasks, mission, goals

The Dutch government has assigned four main tasks to the RDW:

- **Licensing**

The approval of vehicles and vehicle parts on the Dutch and European market. In addition, based on safety and environmental aspects, monitoring the technical condition of vehicles.

- **Supervision & Control**

Enforcing legislation and regulations and supervising companies that carry out public tasks in the mobility chain, including garages, importers, providers and insurance companies.

- **Registration & Information Provision**

Registration of driving licenses, vehicles, vehicle characteristics, vehicle owners and providing the related information.

- **Issuing documents**

Issuing documents in the vehicle and driving license chain.

RDW an overview



History

- **1936: Establishment of the Registration Office for Motor Vehicles and Trailers**
- **1936: Buses and rental cars became part of the vehicle registration.**
- **1945: Initiative for the new Road traffic act in 1945; which came into force in 1951.**
- **1949: Establishment of the National Vehicle Registration Authority (Rijksdienst voor het Wegverkeer, RDW).**

1905

1906

1909

1935

1936

1945

1949



RDW

History

- **1951: The central issuing of registration certificates began on 1 January 1951.**
The registration certificate consisted of one part. Certificates for lorries, trailers and semi-trailers had additional pages and inserts. The increase was enormous. It went from *1500* per week in 1951 to *2000* per week in 1952 and over *4000* per week in 1953.

In the 1950s the issuing of driving licences to Dutch people abroad began, as did the design and registration of.

- **1957: The two-part vehicle registration document came into being.**

1949

1951

1957

1974

1980

1981

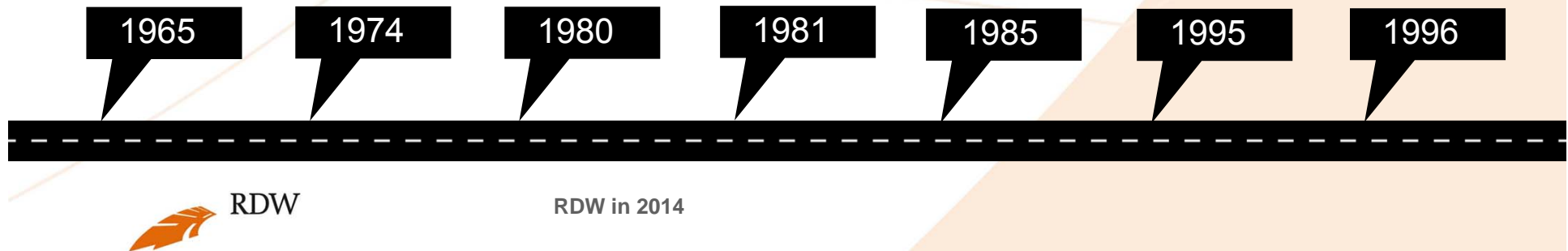
1985



RDW

History

- New number/letter combinations arrive for registration certificates in 1965, 1973, 1978, 1991, 1999, 2006 (7th registration certificate combination for light commercial vehicles) and 2008 (7th registration certificate combination for private cars).
- 1974: RDW got its first own testing station, moved part of its operations from The Hague to Veendam and Part III was introduced.
- 1980: Test centre in Lelystad opened.



History

- **1981: The APK I (testing of heavy goods vehicles) began.**
- **1985: The APK II (testing of light vehicles) began.**
- **1995: A new Road traffic act and a new register of registration certificates came into force. A start was made with the linking of vehicle registration files.**
- **1996: Since 1996 is RDW an independent governing body – funded by charges, that performs statutory duties pursuant to the Road Traffic Act, on the instructions of the Ministry of Infrastructure and the Environment.**

1965

1974

1980

1981

1985

1995

1996



RDW

RDW in 2014

Locations RDW

RDW Office Seoul

RDW Office Detroit



- - Main Office at Zoetermeer
- R&I Veendam
- ICT Groningen
- △ Test centre Lelystad
- ★ RDW APK centre The Netherlands
- Inspection centres

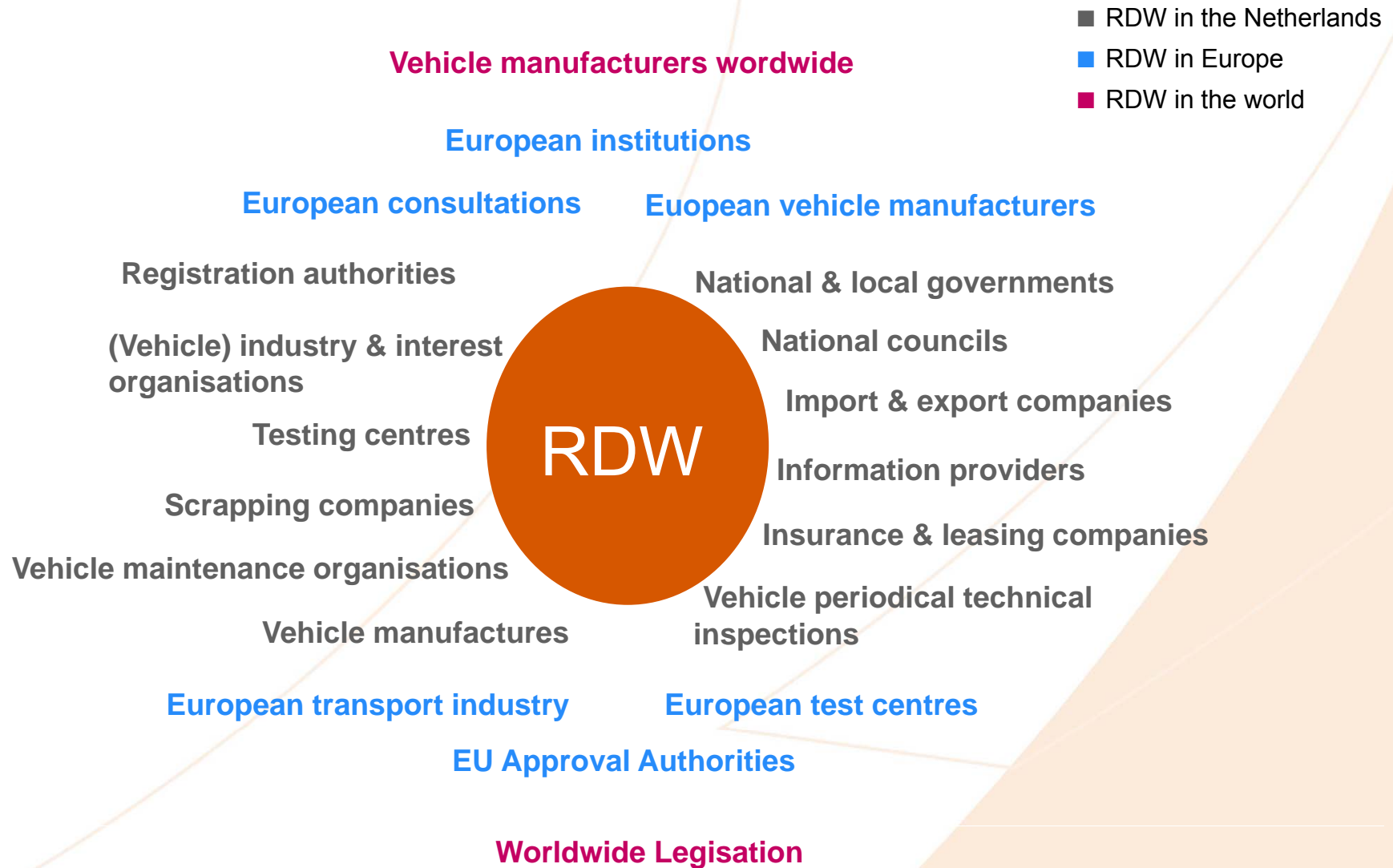
RDW in the world



Active in more than 50 countries



The environment of the RDW

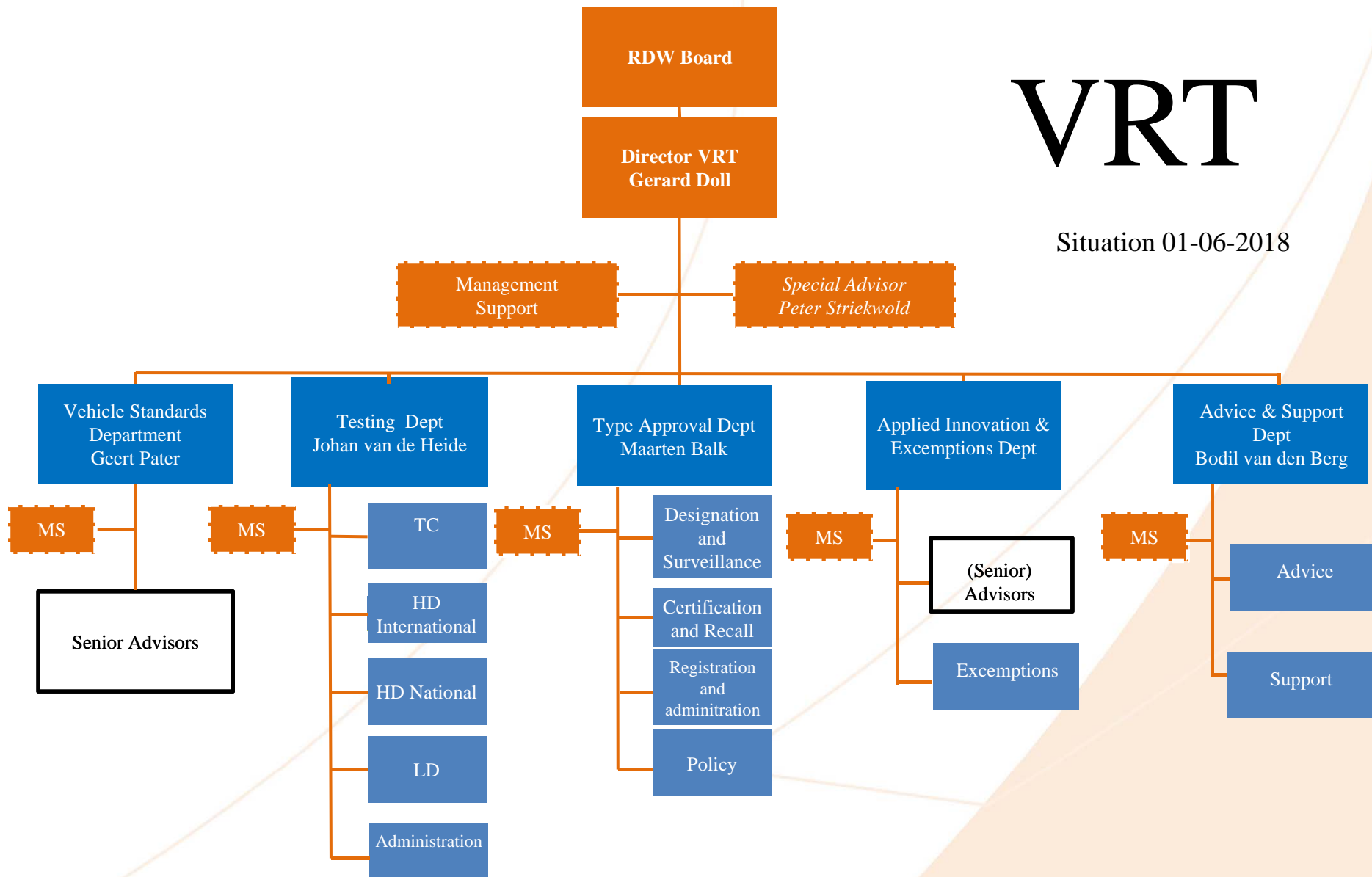


Organisation RDW



VRT

Situation 01-06-2018



תודה
Dankie Gracias
Спасибо شكراً
Merci Takk
Köszönjük Terima kasih
Grazie Dziękujemy Děkojame
Ďakujeme Vielen Dank Paldies
Kiitos Täname teid 谢谢
Thank You Tak
感謝您 Obrigado Teşekkür Ederiz
Σας Ευχαριστούμ 감사합니다
ขอบคุณ
Bedankt Děkujeme vám
ありがとうございます
Tack