



Netherlands Food and Consumer  
Product Safety Authority  
*Ministry of Economic Affairs*



# The Netherlands Food and Consumer Product Safety Authority (NVWA)

Liesbeth Kooijman, DVM  
Head Import Division



## Outline

- Mission statement and main tasks
- NVWA within the Dutch Government
- General description of the NVWA
- Division structure
- Most important activities of each division



## **Mission statement**

The NVWA safeguards the health of animals and plants, animal welfare and the safety of food and consumer products, and enforces nature legislation



## Main tasks

- The NVWA identifies where the risks for people, animals and nature are the greatest.
- We assess these risks and take action where required.
- Our enforcement is focused on influencing behavior.
- We do this by risk assessment, communication, supervision and enforcement.

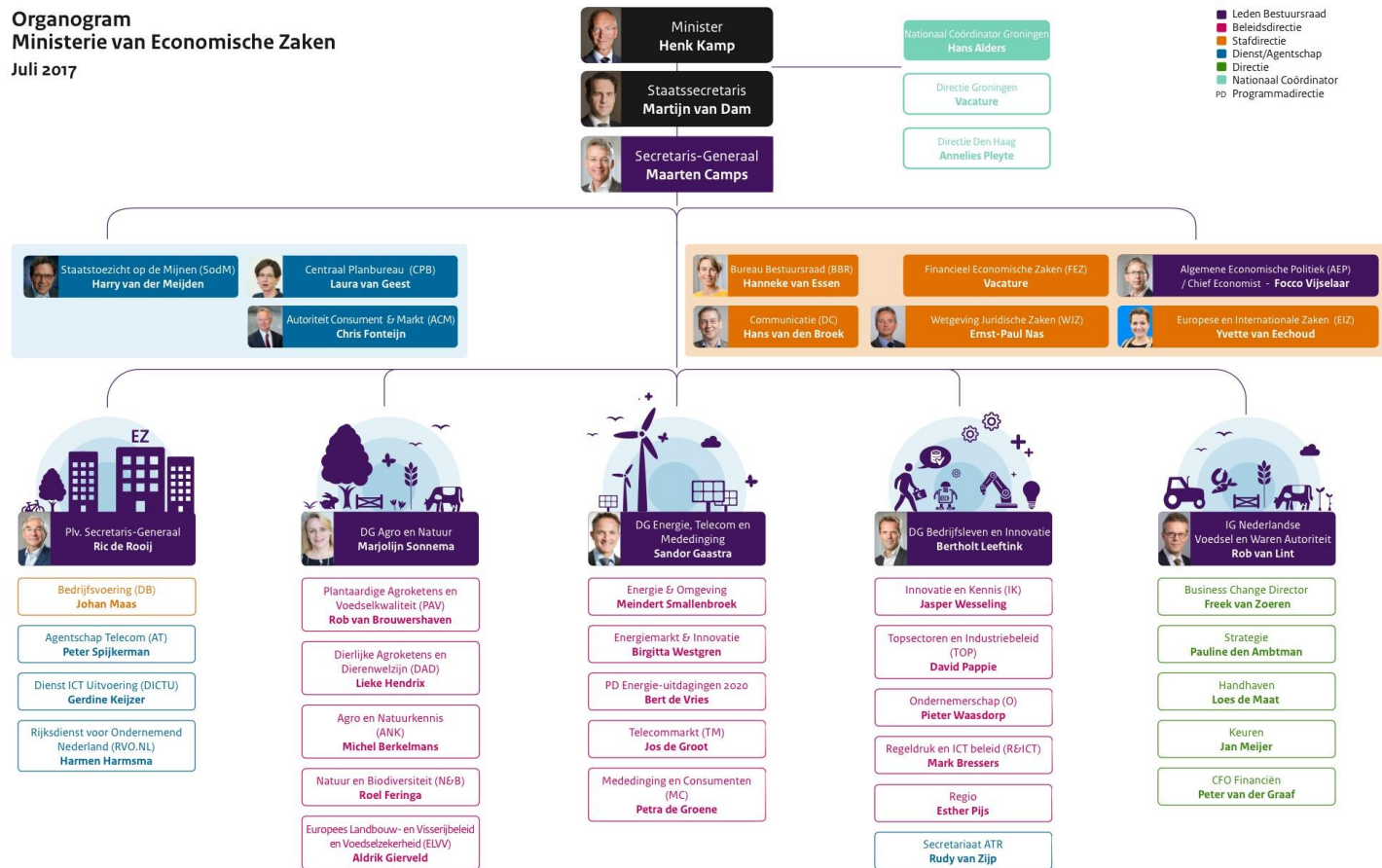


## NVWA

- Central Competent Authority
- Part of the Dutch central government administration
- Organizational unit of the Ministry of Economic Affairs
- Assignments of:
  - Ministry of Economic Affairs
  - Ministry of Health, Welfare and Sports

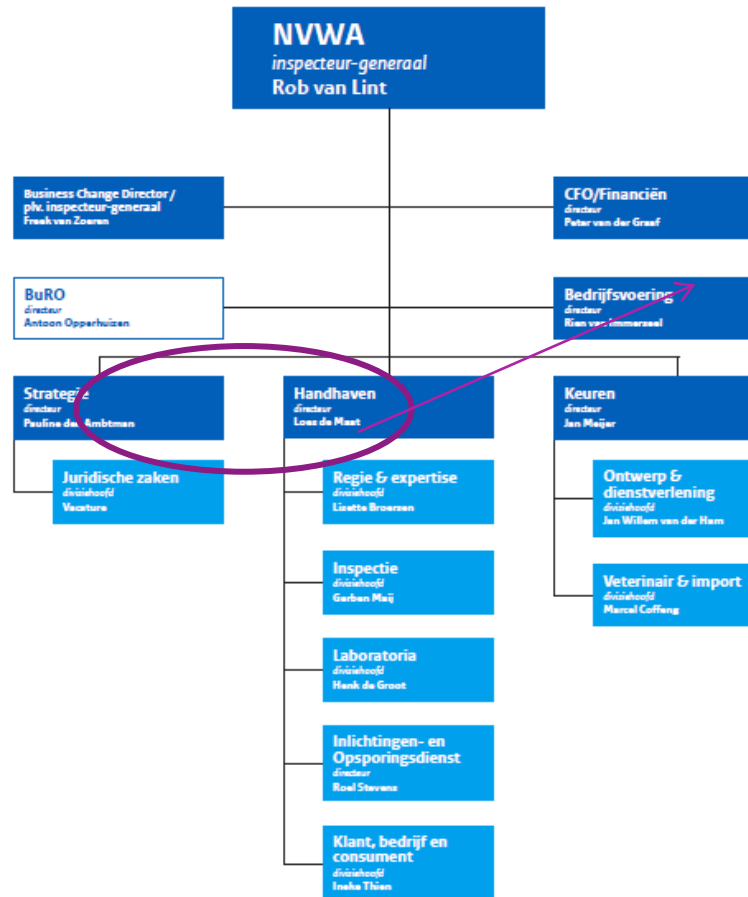


# Organogram Ministerie van Economische Zaken Juli 2017



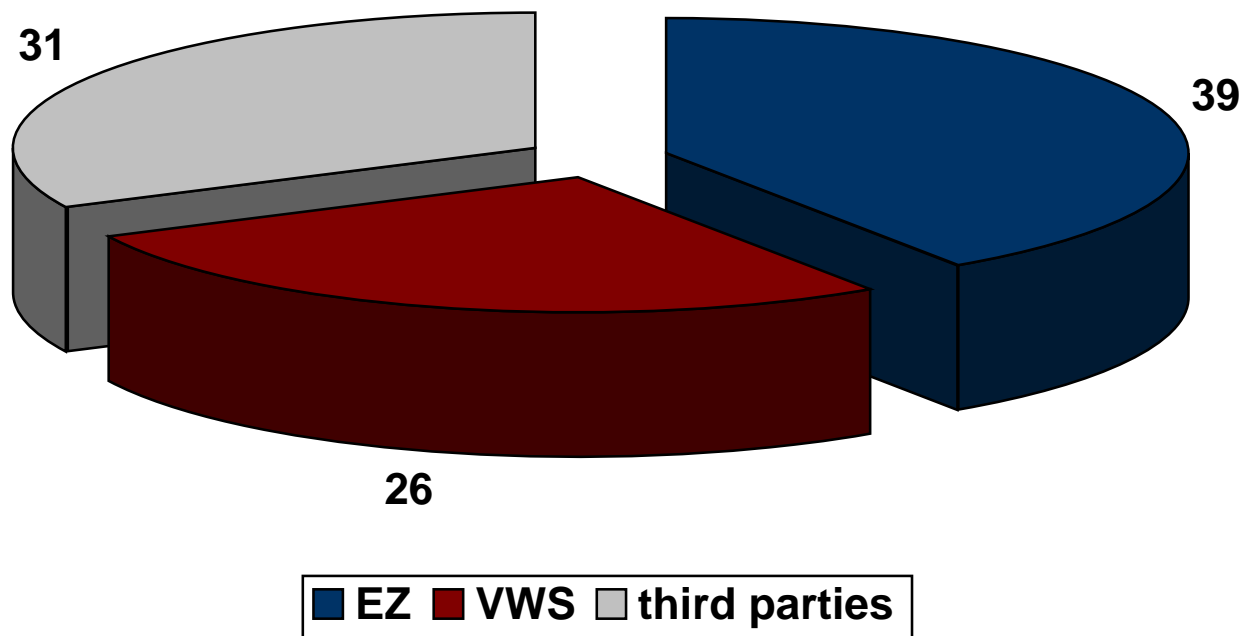


# NVWA





## Budget 2017 (€ 325 million, KGS 26 billion)





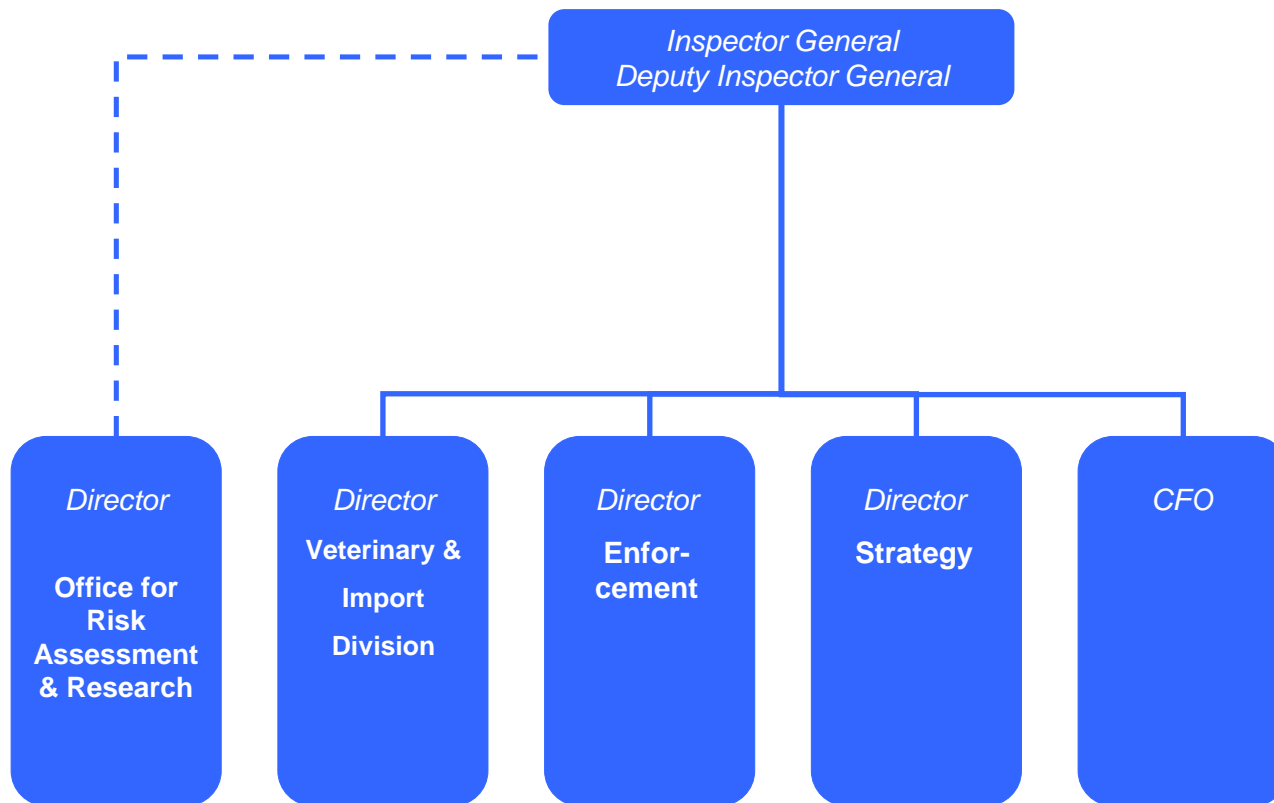


## Key facts and figures

- 2580 total number of staff
- Number of controls: 160.000
- Samples: 370.000
- Warnings, fines and other sanctions: 17.000



# Organizational structure of the NVWA





## Office for Risk Assessment & Research

- Science based advice (Risk assessment) on all domains of the NVWA
- Risk communication
- Functional separation of risk assessment and risk management within the NVWA
- Advice supports a risk based approach
- Product chain analysis



## Veterinary & Import Division

- Safety of meat and meat products
- Animal health (including animal diseases and disease eradication)
- Animal welfare
- Export inspections and certification
- Import inspections and controls





## Veterinarians and inspectors

- 650 FTE
- 325 veterinarians
- 280 are working as a veterinary officer
- 40 senior veterinary officers
- 125 Lay inspectors



## Relationship between NVWA and KDS

1. KDS-meat inspectors are qualified for performing post mortem-inspections
2. Tasks KDS-meat inspectors:
  - Post mortem examination (e.g. incision, visual examination)
  - Decisions on findings (e.g. defects of hygienic nature)
3. If unfit:
  - Corrections to be made by slaughterhouse personnel
  - Official veterinarian of the NVWA makes the final decision
4. Several levels of management control:
  - Daily contact (official veterinarian)
  - Audits and inspections
  - Management meetings
5. The NVWA being the central competent authority has the final responsibility (based on an official contract)



## Relationship between NVWA and COKZ

1. The Netherlands Controlling Authority for Milk and Milk Products (COKZ) is the Netherlands authority for the control of milk and milk products, as well as for eggs, egg products and poultry meat (trading standards).
2. The control of eggs and poultry meat is carried out by a separate division of the COKZ, namely the Dutch Controlling Authority for Eggs (NCAE)



## Enforcement Division

- Inspection on farms (use of pesticides, veterinary drugs, animal feed, animal welfare)
- Transport controls (animal welfare)
- Plant health, including national reference centre for plant health
- Plant protection NPPO
- Invasive species







## Enforcement Division

- Safety of food, feed and drinks
- Safety of production and preparation
- Fishery monitoring
- Smoking prohibition at working place, including pubs and restaurants
- Safety of toys, cosmetics, household chemicals, electrical equipment, gas appliances, tattoo and piercing





# Criminal Investigation Service

- Special Investigative Services Act
- Extensive powers and coercive measures (equal to police detectives) for intelligence and investigation
- Focus on serious crime: complex, internationally oriented and organised fraud
- Seizure of illegally obtained profits

