



Economic Competitiveness Package

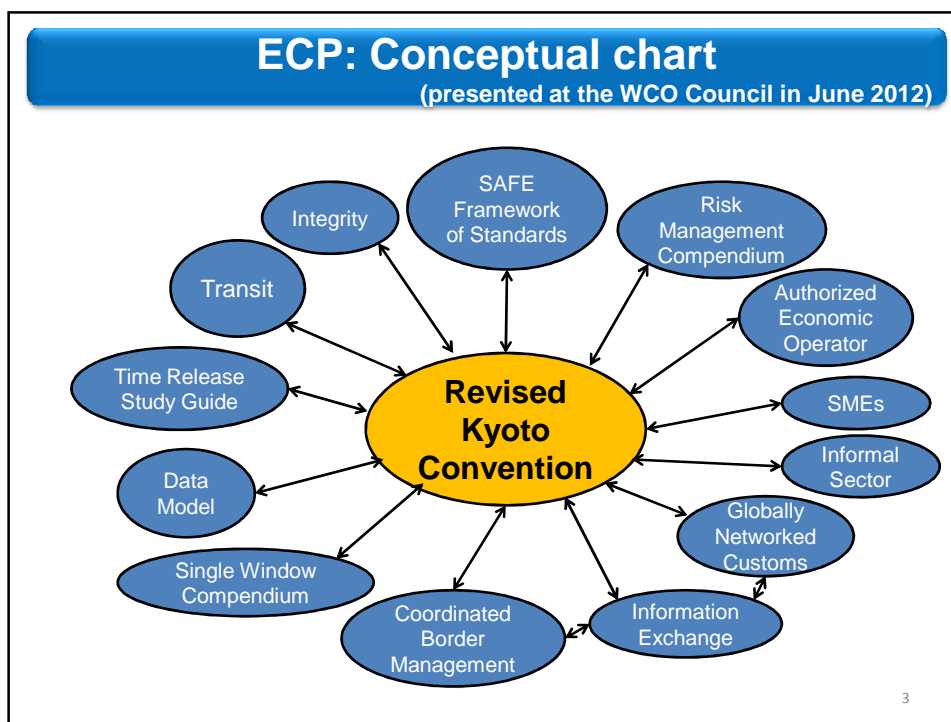
29 January 2013
Toshihiko Osawa
World Customs Organization

1

Economic Competitiveness Package

- **Background**
 - Economic uncertainty due to ongoing Global Financial Crisis
 - WTO negotiations
 - Regional integration
- **Customs' contribution**
 - Promote Revised Kyoto Convention and other tools
 - Enhance cooperation among all stakeholders in international trade
 - Share best practices among Members
 - Develop new tools as appropriate
 - Capacity building

2



The Conclusion of the WCO Council in 2012

- *Welcomed and endorsed the Economic Competitiveness Package and asked the Secretariat to establish, for December 2012, a concrete Action Plan to develop and implement this Package*
- *Encouraged the inclusion of innovative and best practice examples and welcomed Members' offers to share experiences and techniques, and performance benchmarks, and to contribute to the development of the Action Plan*
- *Underlined the economic role of Customs*
- *Agreed that capacity building should be part of the Economic Competitiveness Package*
- *Strongly encouraged the continued promotion of the Revised Kyoto Convention, including some very positive and practical work being done at the regional level and in economic agreements.*

4

Kyoto Communiqué (WCO Policy Commission December 2012)

11. Policymakers worldwide have articulated the positive impact that international trade and trade facilitation have on economic recovery and sustainable growth. As the central public sector border agency, Customs administrations are integral to the smooth movement of goods, conveyances and people across borders.

12. To that end, the WCO has contributed - through its standards, tools, and technical assistance - support for increasing economic growth and competitiveness by Members. This culminated in the adoption of the innovative Economic Competitiveness Package (ECP) at the 119th/120th Council Sessions in June 2012.

13. The ECP assists Customs administrations with border management responsibilities and supports regional integration. The ECP could provide practical implementation guidance in preparation for any future WTO agreement on trade facilitation. Under the ECP, the WCO is collecting innovative and best practices on matters such as coordinated border management (CBM); IPR border enforcement; small and medium sized enterprises (SMEs); informal trade practices; and transit.

14. The Policy Commission endorsed the ECP Action Plan and urged its steady implementation through technical assistance, including needs assessment and gap analysis. The Policy Commission also encouraged regional entities to develop programmes to implement the ECP in co-operation with the WCO and regional development banks.

5

Action Plan

4 Areas and 21 Actions for the enhancement of Economic Competitiveness

Awareness-raising and Member's needs assessment

Regional seminars/workshops, Publication, Needs assessments, etc.

Promotion of existing instruments and Tools

Regional strategic plan, Capacity building, Donor coordination meeting, Accreditation of more experts, E-learning for the RKC, etc.

Collection and dissemination of innovative and best practices

Collection and dissemination of innovative and best practices on existing tools and Informal trade, SMEs, CBM and Transit, etc.

Development and elaboration of the ECP

Development of new tools, Further research on ECP, regular report to the PTC, etc.

6

Action Plan - Regional needs

Considering the fact that WCO Members' needs in respect of the ECP are very different, the adequate assessment of such needs is definitely important for the implementation and the development of the ECP.



WCO will Organize regional workshops/seminars for the ECP in all WCO regions by June 2014

7

Action Plan –Innovative and best practices

The ECP will be developed, based on innovative and best practice examples of WCO Members. Four specific areas are highlighted in terms of the collection of innovative and best practices : Informal Trade, Small and Medium Enterprises (SMEs), Coordinated Border Management (CBM) and Transit.



The WCO will collect and disseminate innovative and best practices on the ECP (especially, on Informal Trade, SMEs, CBM and Transit) by the end of 2013.

8

Development of the ECP							
		Council June 2012	PTC Nov 2012	PC Dec 2012	PC & Council June 2013	Dec 2013	Dec 2014
ECP	Concept of ECP	Adopted					
	List of components	Adopted					
	Schedule of instruments and tools (technical explanation)		Discussion				
	List of tools for accession to the RKC		Discussion				
	Research Paper		Discussion				
Action Plan			Discussion	Adopted			
	Best practices		Collecting Best Practices			Approval	
	New instruments or tools for the ECP		Development of new tools (where appropriate)			Approval	
	Capacity Building						

For more information

Toshihiko.Osawa@wcoomd.org