

# **Smart Health for Smart Living:**

**Towards**

**Better Healthcare for all Thai Citizens**

**Asanee Kawtrakul**

**NECTEC**

**8 April 2009**

# Outline

The background of the slide features a soft-focus image of a hand holding a pen, poised to write on a document. A magnifying glass is positioned over the document, highlighting a specific area. The overall color palette is warm, with shades of yellow, orange, and light brown.

- **Goal**
- **Challenges**
- **Solution Roadmap**
- **Key Success Factors**
- **Conclusion**

# **Goal: Healthy Thailand**

**Good Health for All  
With Better Services  
&  
More Preventive**

# Challenges

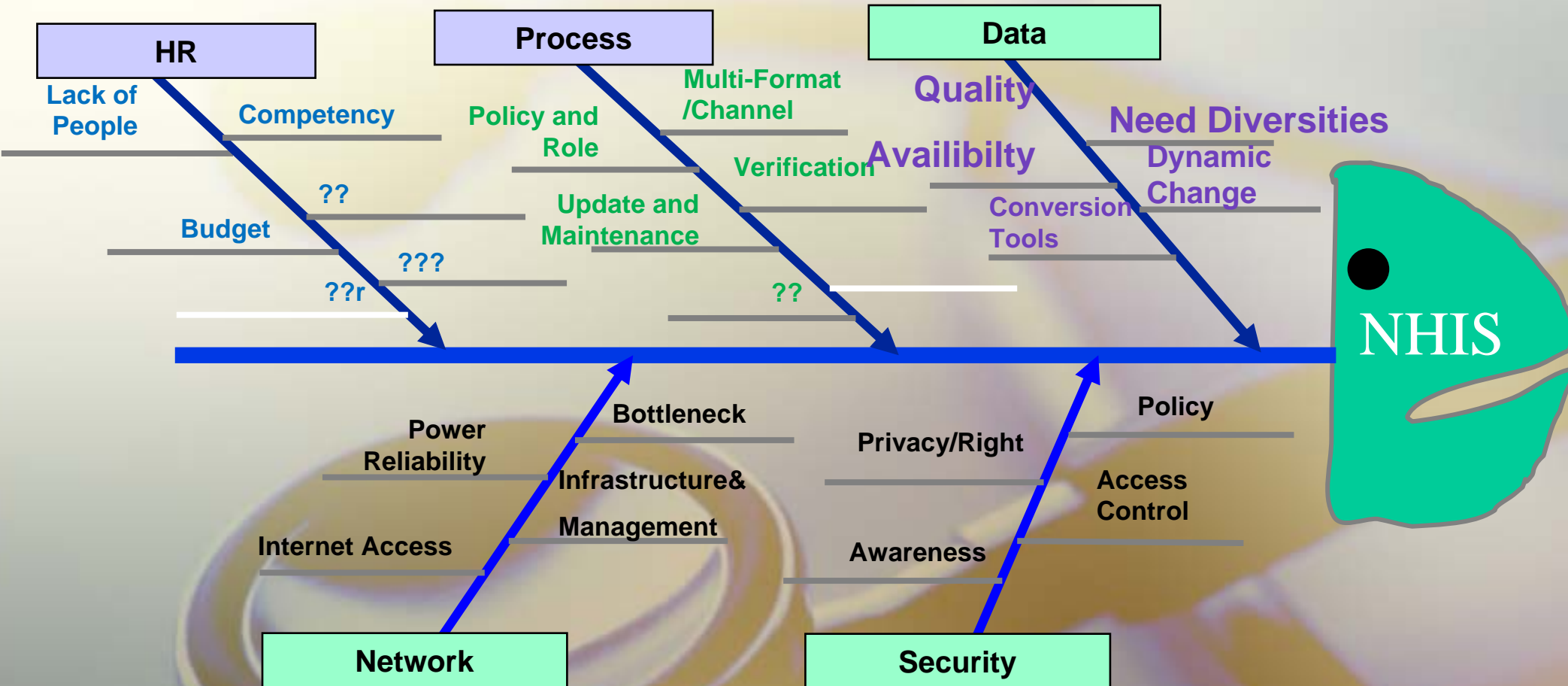
- Budget Planning
- Disease management
- Health Care Service Divide
- Senior Citizen Society with smaller families

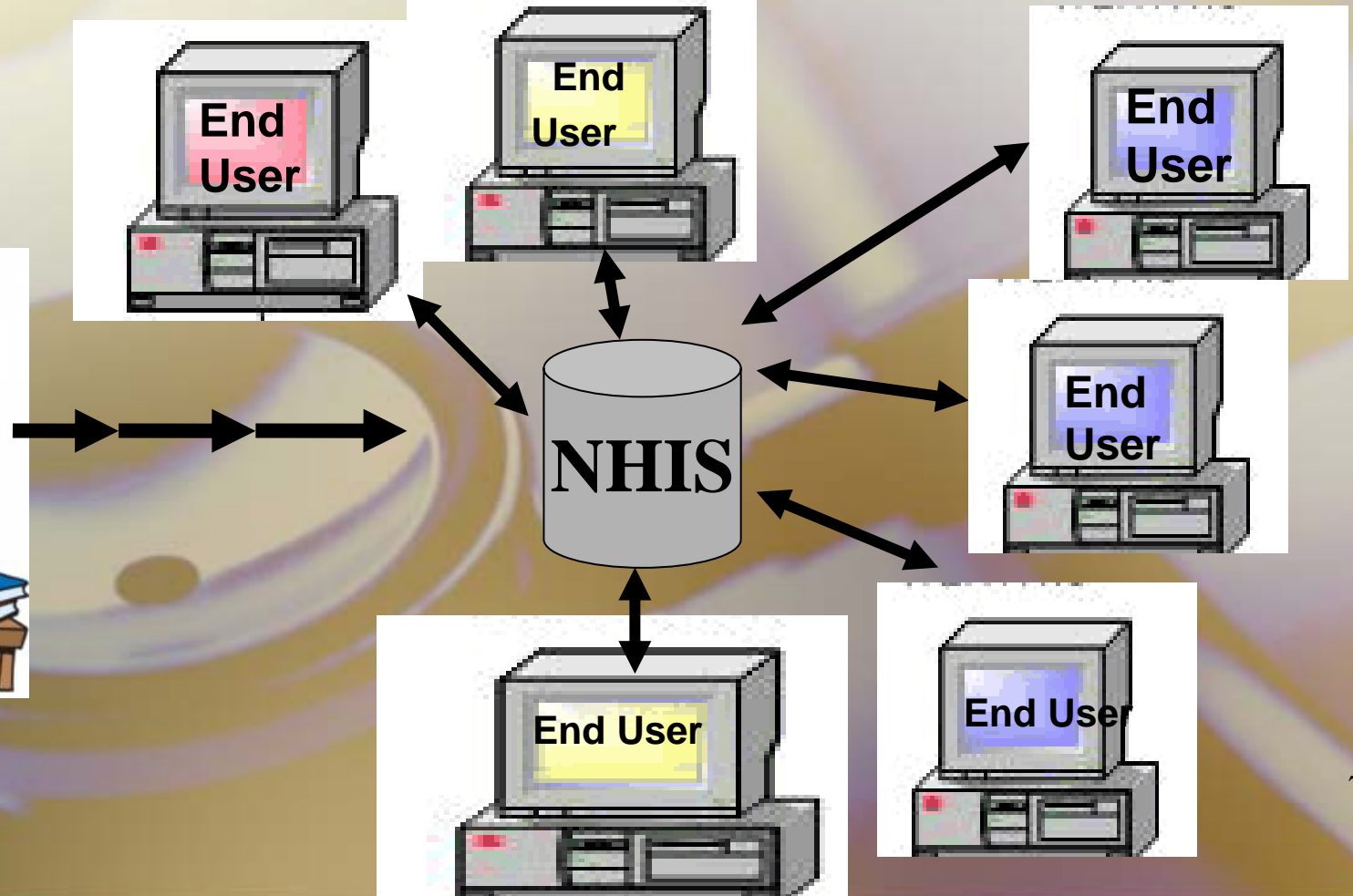
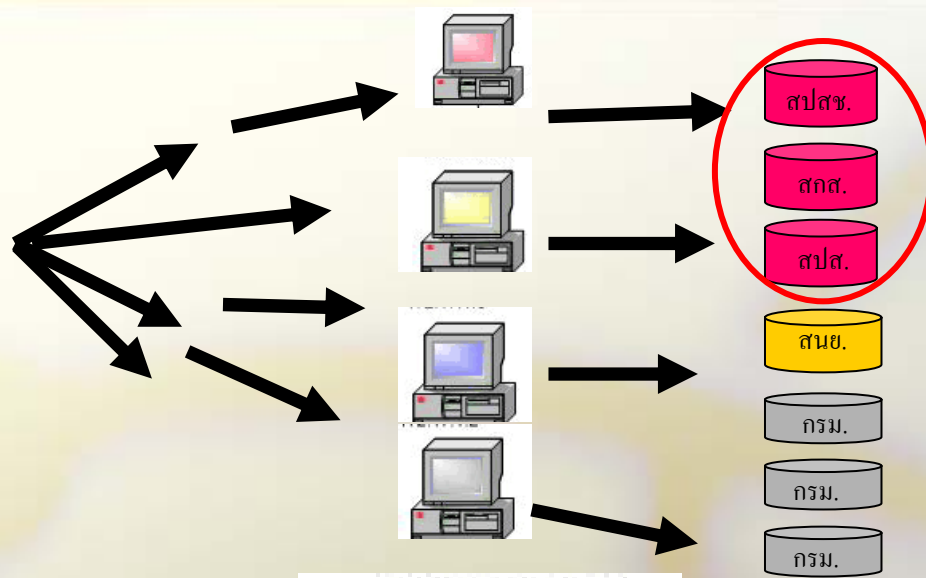
# Solution Roadmap

- **First and Important Step**
  - National Health Information System with High Quality Data
- **Planning Step for the near Future**
  - Smart Health Care Services with innovation process and technologies
  - Smart Home for I-Living with Integrated Technologies



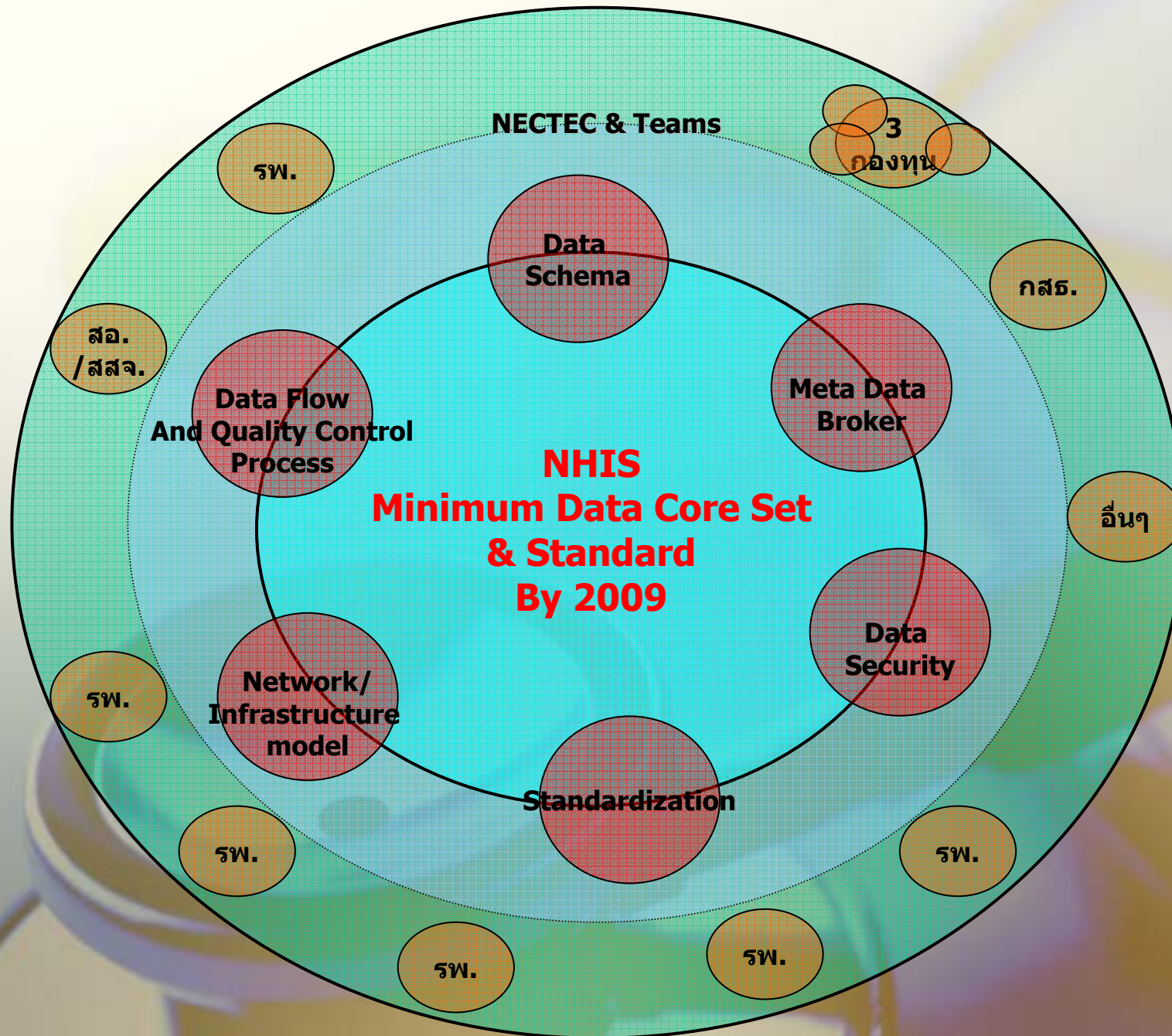
# Before: NHIS







# First Step

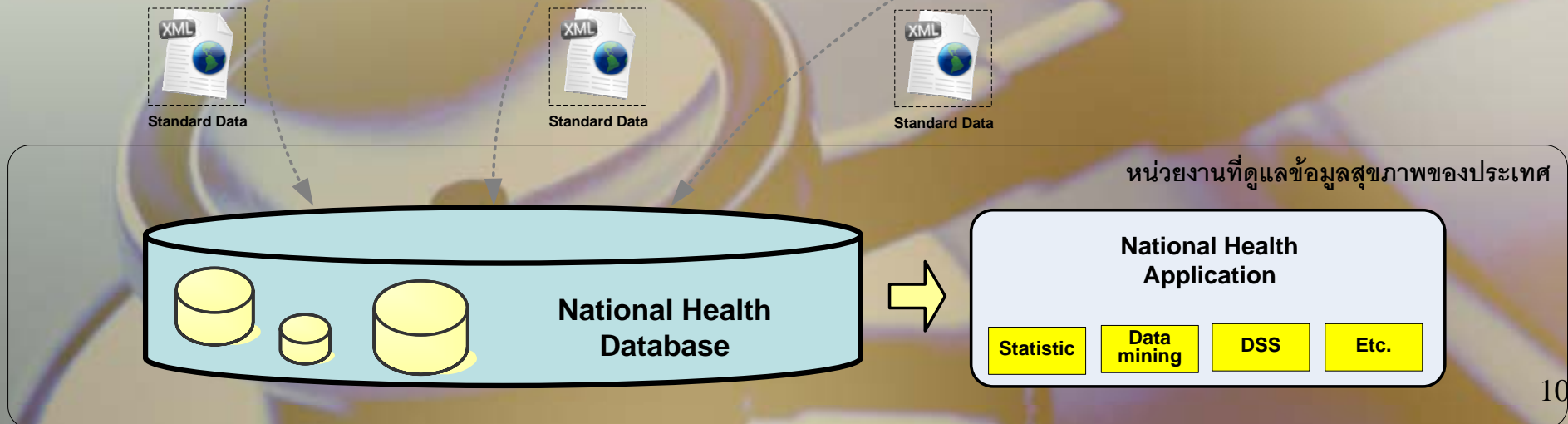
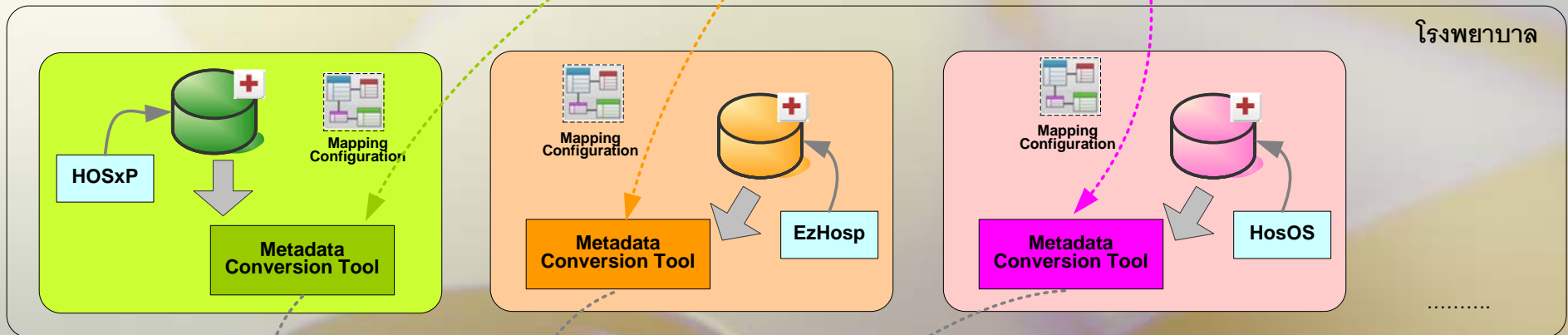
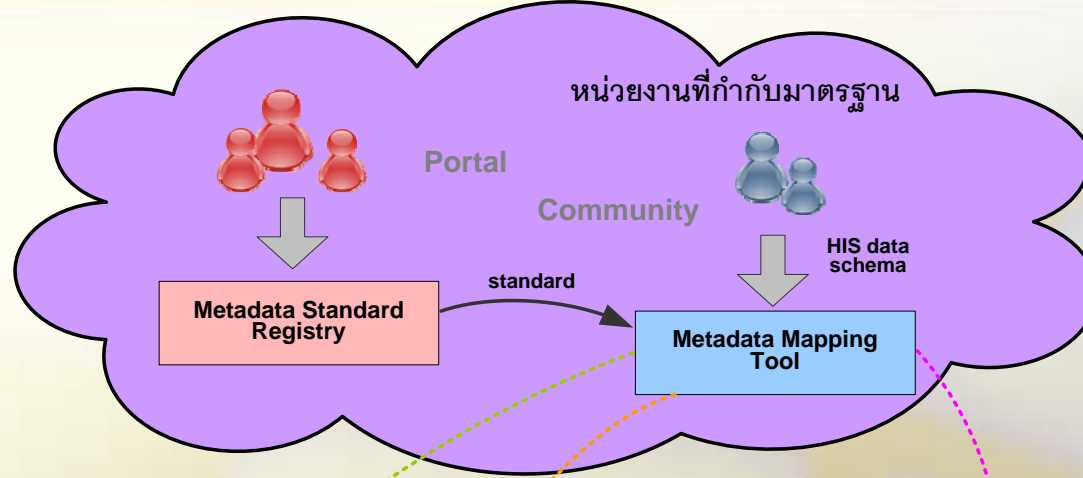






**Minimum Data CoreSet  
Standard  
Metadata Broker  
Data Quality Control Process  
Data Security  
Networking Performance**

# Data Broker



# Standard Process for Health Data Management

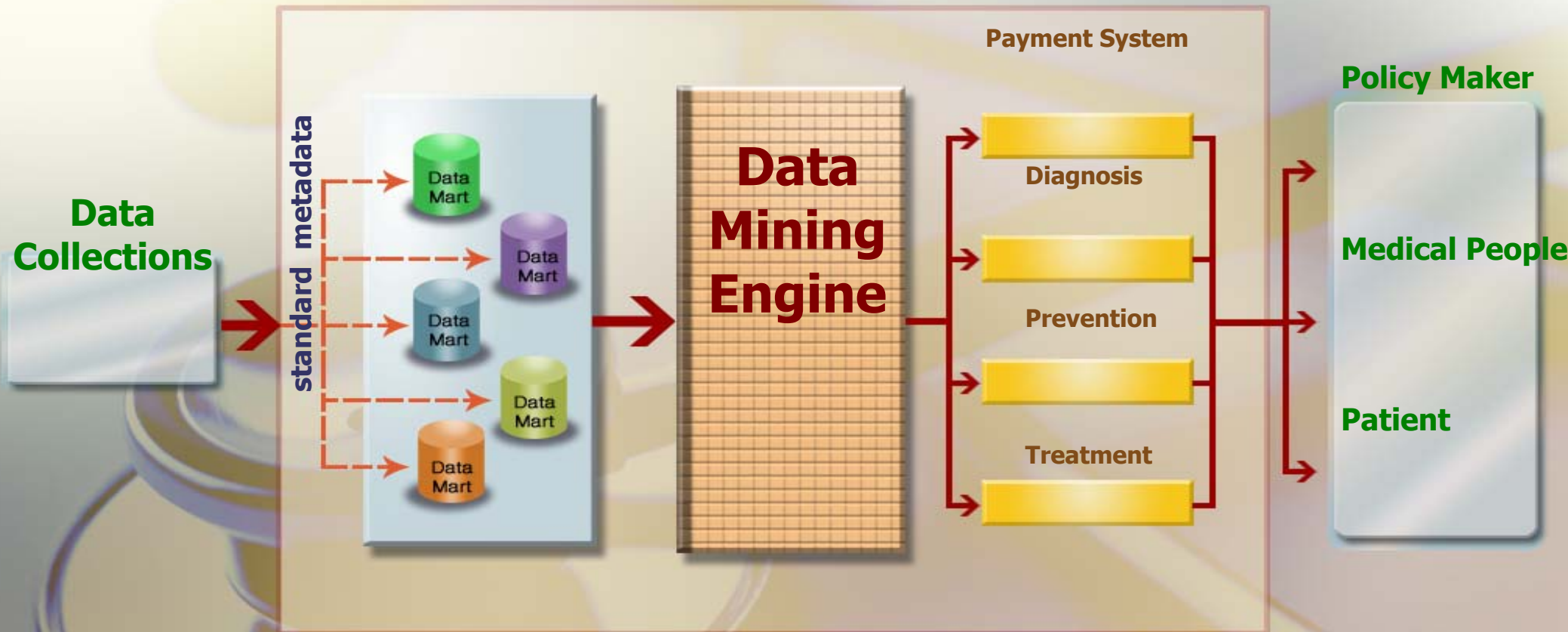




# National Health Information System

## Data Ware House

## End-users





# Planning Step : Smart Health Smart Living

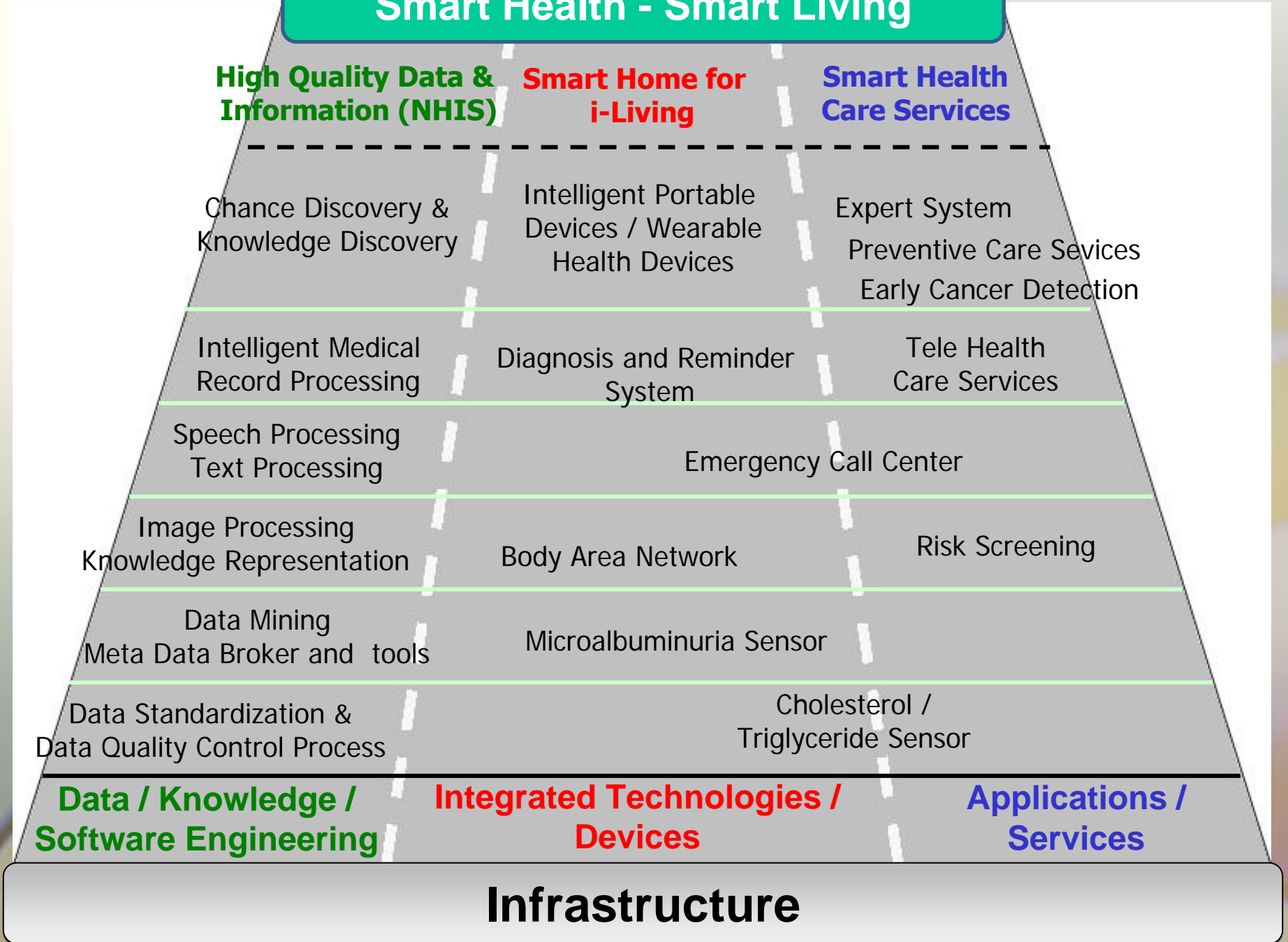
# Smart Health's Roadmap





# Healthy Thailand

## Smart Health - Smart Living



2561

2556

2555

2554

2553

2552

2551

Infrastructure

# Key Success Factors

- Collaboration with Right Stakeholders
- Communication: Requirement, Awareness and Change management
- Continuous Improvement with Right Technologies

# Conclusion

- **Good Data → Good Policy, Good Plan and Good Decision Making**
- **More Knowledge → More Preventive**
- **Good Health → Creative Economy with Smart Living**